



GOWAN AVENUE, SW6 £6,950 PER MONTH UNFURNISHED

An outstanding five bedroom family house located on this quiet and popular residential street within easy walking distance of Parsons Green underground station and Bishops Park.

Fulham & Parsons Green | 020 7731 3388 | fulham@winkworth.co.uk

Tenant Fees Apply: Details of fees for tenant referencing, tenancy agreement admin fees and renewal fees are available on the Winkworth website and the link can be found with the displayed rent for the property. Tenants should ensure they are fully conversant with these upfront fees and other costs that are involved at the outset of the tenancy before making an offer to rent and your local Winkworth office will provide written details upon request.

winkworth.co.uk

Winkworth

for every step...

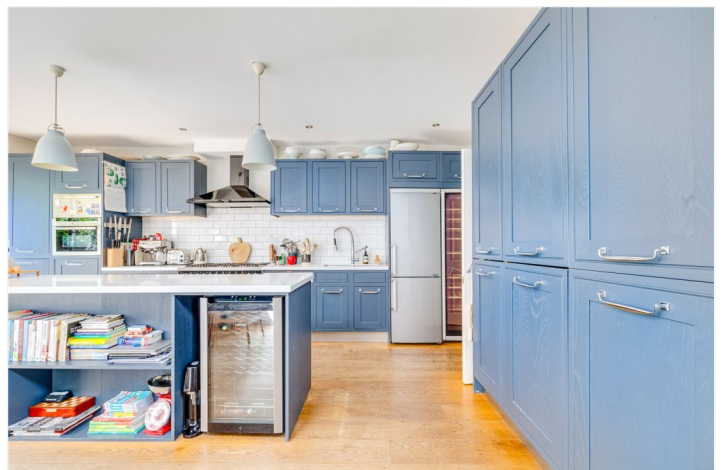


This wonderful property acts as the perfect example of an immaculate and substantial family home extending to over 2000 square feet.

On the ground floor, there is a double reception which boasts superb width, with a dual entrance leading through to the kitchen. The kitchen benefits from ample storage solutions, high end appliances, two ovens, wine fridges, and plenty of space for both relaxing and dining. Crittal-style doors lead out to the sunny, South-facing garden. There is also a guest cloakroom.

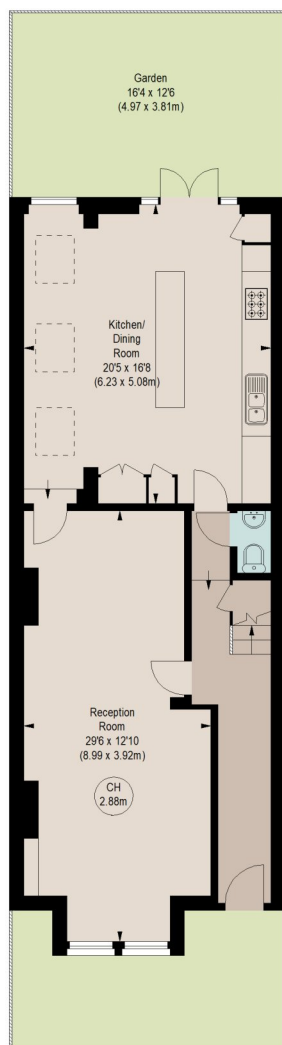
On the first floor there are two double bedrooms with built in storage. They are served by a beautifully renovated family bathroom which houses the washing machine and separate tumble dryer. The expansive master bedroom, located at the front of the house, has built in wardrobes and a luxurious ensuite shower-room. On the second floor there is a further double bedroom with storage in the eaves and a fifth bedroom which is set up as a study. There is another family bathroom located on this floor which has a large bath and separate walk-in shower.

Gowan Avenue is located between Fulham Palace Road and the Munster Road and is well situated to take advantage of the area's local conveniences, bars and restaurants as well as the open spaces of both Fulham Palace and Bishops Park. The property is 0.8 miles from Parsons Green and 0.7 miles to Putney Bridge underground stations (running on the District Line). The area has an excellent selection of nursery, primary and secondary schools including Fulham Prep, Kensington Prep, Pippa Pop-ins and Lady Margaret's.

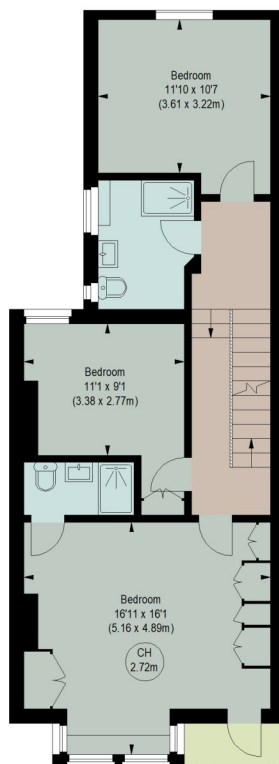




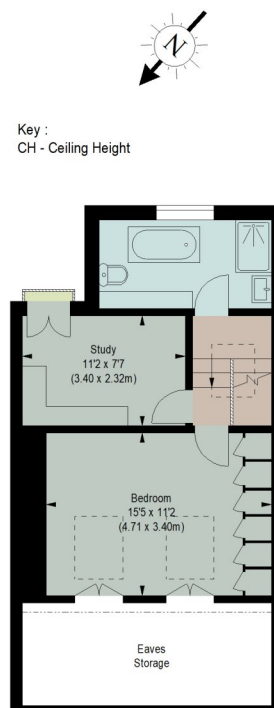
Eaves Storage
120 sq ft / 11.15 sq m



GROUND FLOOR
(76.22 m²)



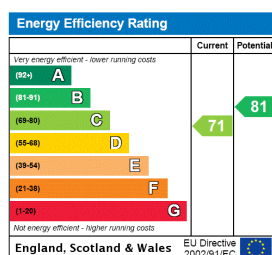
FIRST FLOOR
(66.36 m²)



SECOND FLOOR
(49.58 m²)

The floor plan is not to scale and measurements and areas shown are approximate and therefore should be used for illustrative purposes only. The plan has been prepared in accordance with the RICS code of Measuring Practice and whilst we have confidence in the information produced, it must not be relied on. If there is any aspect of particular importance, you should carry out or commission your own inspection of the property.

This floorplan is for illustration purposes only and is not to scale. The position and size of doors, windows, appliances and other features are approximate.



Fulham & Parsons Green | 020 7731 3388 | fulham@winkworth.co.uk

Winkworth

for every step...

winkworth.co.uk

Winkworth wishes to inform prospective buyers and tenants that these particulars are a guide and act as information only. All our details are given in good faith and believed to be correct at the time of printing but they don't form part of an offer or contract. No Winkworth employee has authority to make or give any representation or warranty in relation to this property. All fixtures and fittings, whether fitted or not are deemed removable by the vendor unless stated otherwise and room sizes are measured between internal wall surfaces, including furnishings.