



VICTORIA COURT, HENLEY-ON-THAMES, OXFORDSHIRE, RG9
£300,000 LEASEHOLD

**A TWO BEDROOM FIRST FLOOR MAISONETTE IN THIS
 POPULAR OVER 60'S RETIREMENT COMPLEX IN THE
 CENTRE OF HENLEY-ON-THAMES**

Reading | 0118 4022 300 | reading@winkworth.co.uk

Winkworth

for every step...

winkworth.co.uk



DESCRIPTION:

A well presented two bedroom first floor maisonette in this popular over 60's retirement complex in the centre of Henley-on-Thames. Conveniently located a short walk to Henley station, the River Thames and Henley's excellent selection of shops, cafes, restaurants and pubs. The property offers generous sized accommodation and benefits from its own front door accessing a private staircase which has a Stannah stairlift for ease of access. There are two double bedrooms, the master with built in wardrobes, a bathroom, a large lounge/diner and a fitted kitchen. There is also loft access offering an excellent storage solution and the development further benefits from lovely manicured gardens. This delightful property in this superb location is for sale with no chain complications.

AT A GLANCE

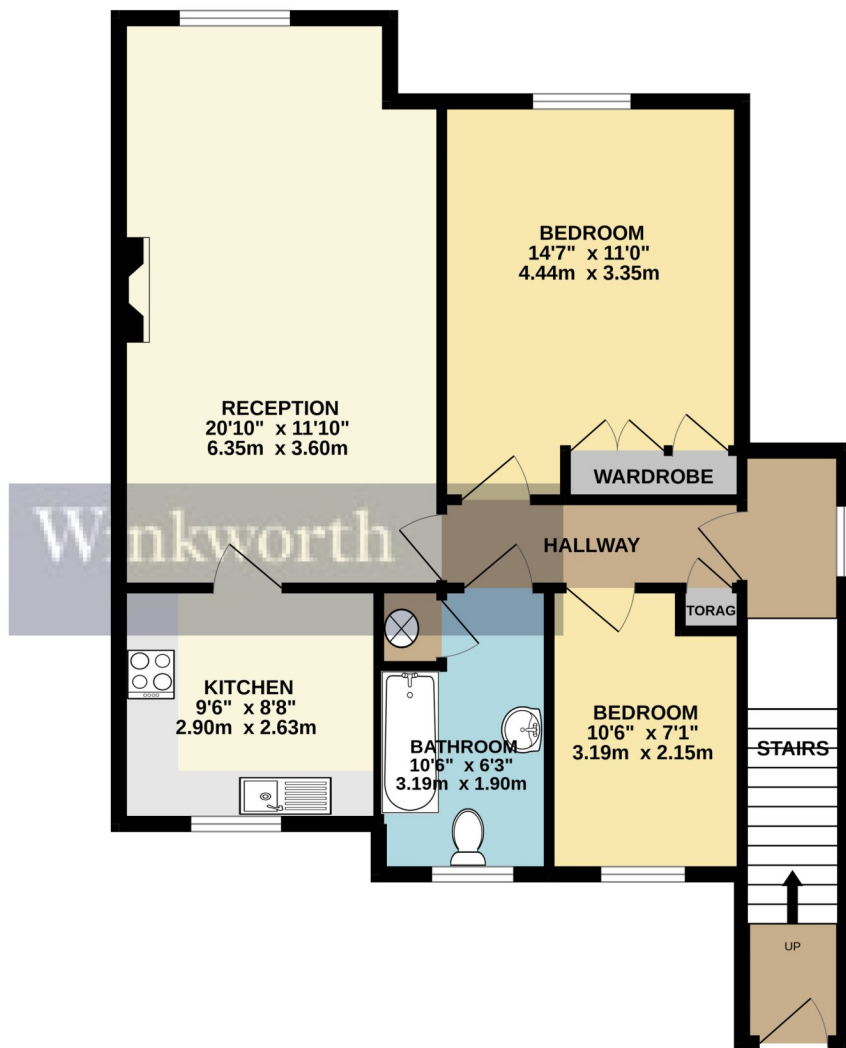
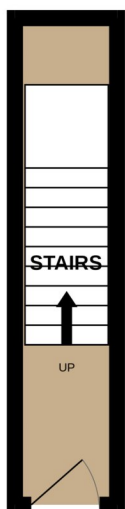
- Over 60's Retirement Property
- Two Bedroom First Floor Maisonette
- Two Double Bedrooms
- Spacious Living Room
- Fitted Kitchen and Bathroom
- Large Loft for Storage
- 66 Year Lease





GROUND FLOOR
67 sq.ft. (6.2 sq.m.) approx.

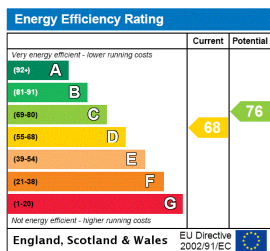
FIRST FLOOR
735 sq.ft. (68.3 sq.m.) approx.



TOTAL FLOOR AREA : 802 sq.ft. (74.5 sq.m.) approx.

Whilst every attempt has been made to ensure the accuracy of the floorplan contained here, measurements of doors, windows, rooms and any other items are approximate and no responsibility is taken for any error, omission or mis-statement. This plan is for illustrative purposes only and should be used as such by any prospective purchaser. The services, systems and appliances shown have not been tested and no guarantee as to their operability or efficiency can be given.
Made with Metropix ©2022

This floorplan is for illustration purposes only and is not to scale. The position and size of doors, windows, appliances and other features are approximate.



Reading | 0118 4022 300 | reading@winkworth.co.uk



winkworth.co.uk

Winkworth wishes to inform prospective buyers and tenants that these particulars are a guide and act as information only. All our details are given in good faith and believed to be correct at the time of printing but they don't form part of an offer or contract. No Winkworth employee has authority to make or give any representation or warranty in relation to this property. All fixtures and fittings, whether fitted or not are deemed removable by the vendor unless stated otherwise and room sizes are measured between internal wall surfaces, including furnishings.