



FOSKETT ROAD, SW6 £6,000 PER MONTH

A newly-renovated four bedroom family house situated on this popular road in the desirable Hurlingham area of Fulham.

Fulham & Parsons Green | 020 7731 3388 | fulham@winkworth.co.uk

Winkworth

for every step...

winkworth.co.uk



This handsome property sits back from the quiet residential road, enclosed by a low brick wall and cast-iron railings. It extends over three floors, providing 1,628 sq ft of family living space.

On entry, to the left-hand side is a double reception room with soaring ceiling height and a feature fireplace. An abundance of natural light fills the space through the beautiful bay window. To the rear is the beautifully renovated, light-filled kitchen, which is arguably the heart of the home. All appliances are integrated and wooden floors run underfoot. The owners have fully extended the room with ample overhead skylights and doors leading out to the large, sunny garden; a perfect space for entertaining guests. There is also a downstairs cloakroom.

Upstairs, are three well-proportioned double bedrooms with built-in wardrobes, and a family bathroom. The principal bedroom occupies the entire of the top floor, benefiting from an en suite bathroom and eaves storage.

Foskett Road is located in the heart of Fulham, running parallel off the New Kings Road. It is conveniently located for an array of shops, restaurants and wine bars on the New Kings Road and the green open space of Hurlingham Park.

Putney Bridge underground station is 0.4 miles away and Parsons Green underground station is 0.5 miles away. The 22 bus connects New Kings Road with Sloane Square and the West End. Please note these distances are approximate.

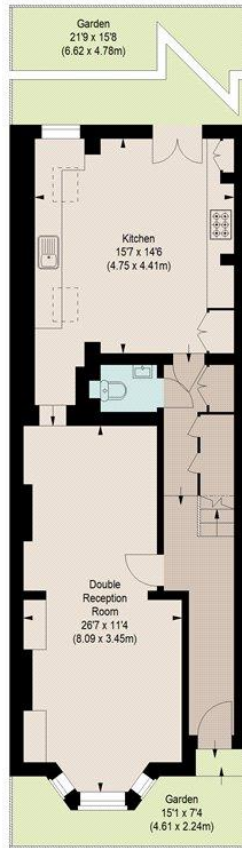
There is an excellent selection of nursery and primary schools in the area including Pippa Pop-Ins, Kensington Prep and Thomas's.





FOSKETT ROAD, SW6

Approximate gross internal area
1628 sq ft / 151.24 sq m
Including Eaves Storage
Eaves Storage 91 sq ft / 8.45 sq m

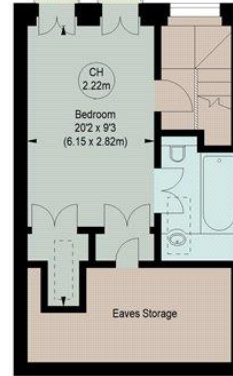


GROUND FLOOR



FIRST FLOOR

Key :
CH - Ceiling Height



SECOND FLOOR

The floor plan is not to scale and measurements and areas shown are approximate and therefore should be used for illustrative purposes only. The plan has been prepared in accordance with the RICS code of Measuring Practice and whilst we have confidence in the information produced, it must not be relied on. If there is any aspect of particular importance, you should carry out or commission your own inspection of the property.

This floorplan is for illustration purposes only and is not to scale. The position and size of doors, windows, appliances and other features are approximate.

Fulham & Parsons Green | 020 7731 3388 | fulham@winkworth.co.uk

Winkworth

for every step...

winkworth.co.uk

Winkworth wishes to inform prospective buyers and tenants that these particulars are a guide and act as information only. All our details are given in good faith and believed to be correct at the time of printing but they don't form part of an offer or contract. No Winkworth employee has authority to make or give any representation or warranty in relation to this property. All fixtures and fittings, whether fitted or not are deemed removable by the vendor unless stated otherwise and room sizes are measured between internal wall surfaces, including furnishings.