

ARCADIA COURT, OLD CASTLE STREET, LONDON, E1
£375,000 LEASEHOLD

CHARMING ONE-BEDROOM APARTMENT IN THE HEART OF SPITALFIELDS WITH COMMUNAL COURTYARD

Shoreditch | 020 7749 7650 | shoreditch@winkworth.co.uk

Winkworth



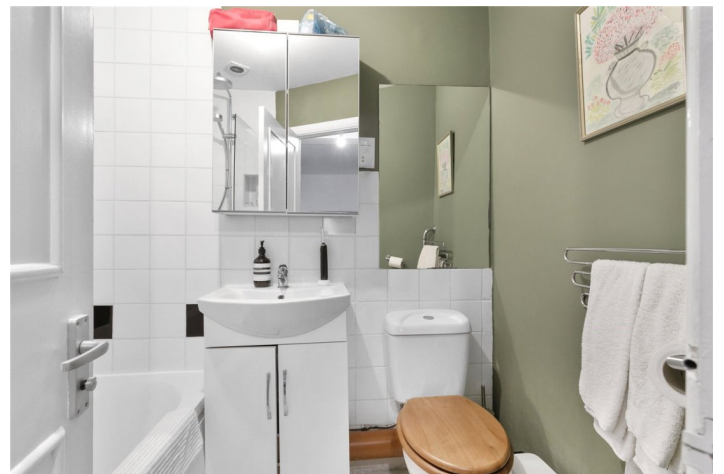
DESCRIPTION:

This delightful one-bedroom apartment is located on the third floor of a well-maintained development in the heart of the vibrant Spitalfields area.

With 446 sqft of space, the property includes an entrance hall, a bright and spacious open-plan living and kitchen area, a generously sized double bedroom, and a stylish modern bathroom. Residents also benefit from access to a tranquil communal courtyard, providing a peaceful retreat in the heart of the city.

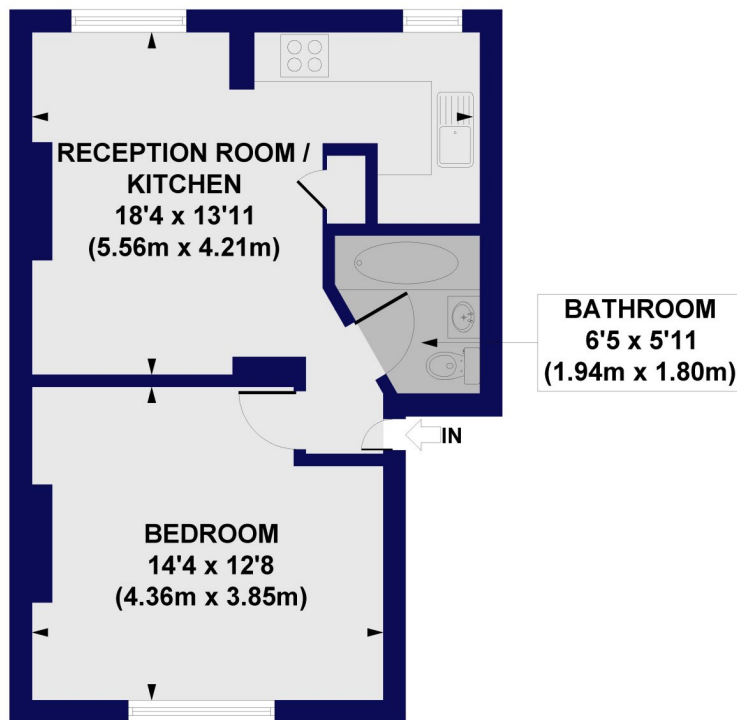
Located just 0.3 miles from Spitalfields Market, this apartment offers the perfect spot with an array of restaurants, bars, boutiques, and cultural attractions right on your doorstep. Excellent transport links ensure easy access across London, with Aldgate East Station (0.2 miles), Aldgate Station (0.3 miles), , and Liverpool Street Station (0.4 miles) all within close proximity.

Winkworth



Winkworth

Arcadia Court, Old Castle Street, E1
Approx. Gross Internal Floor Area 443 sq. ft / 41.12 sq. m

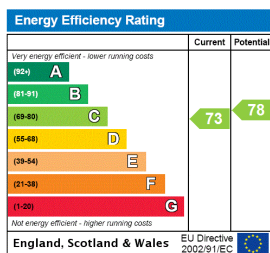


FOURTH FLOOR

All measurements of walls, doors, windows, fittings and appliances, including their size and location, are shown as standard sizes and do not constitute any warranty or representation by the seller, their agent or CP Creative. Any intending purchaser must satisfy himself by inspection or otherwise as to the correctness of the information contained in these plans. This plan is for illustrative purposes only and should be used as such by any prospective purchasers.

Winkworth

This floorplan is for illustration purposes only and is not to scale. The position and size of doors, windows, appliances and other features are approximate.



Shoreditch | 020 7749 7650 | shoreditch@winkworth.co.uk

Winkworth

winkworth.co.uk

See things differently

Winkworth wishes to inform prospective buyers and tenants that these particulars are a guide and act as information only. All our details are given in good faith and believed to be correct at the time of printing but they don't form part of an offer or contract. No Winkworth employee has authority to make or give any representation or warranty in relation to this property. All fixtures and fittings, whether fitted or not are deemed removable by the vendor unless stated otherwise and room sizes are measured between internal wall surfaces, including furnishings.