



CLIFFORD GARDENS, LONDON, NW10

£850,000 LEASEHOLD

A CHARMING, TASTEFUL AND EXTENDED THREE BEDROOM, GROUND FLOOR FLAT WITH PRIVATE GARDEN IN A PERIOD TERRACED BUILDING.

Kensal & Queens Park | 0208 960 4947 | kensalrise@winkworth.co.uk

Winkworth

winkworth.co.uk

See things differently



LOCATION:

Clifford Gardens really is in the heart of Kensal Rise. This location means that you have easy access to the array of amenities on both Chamberlayne Road and College Road. If it's open spaces that you seek then Queens Park is only a ¼ mile away as the crow flies, or you can use the Overground to get up to Hampstead Heath which is only three stops away.



Winkworth



DESCRIPTION:

This is a tastefully renovated ground floor flat situated in the desirable Clifford Gardens. The property boasts three bedrooms, and an extended open plan living and kitchen area to the rear of the flat, providing direct access on to the private garden.

The principle bedroom is located to the front of the property, benefitting from built in storage and period feature fire place. The second bedroom is also a spacious double, with the third room ideal as a single bedroom, nursery or office/work from home space.

The main bathroom is a three piece suite, in keeping with the period of the property.

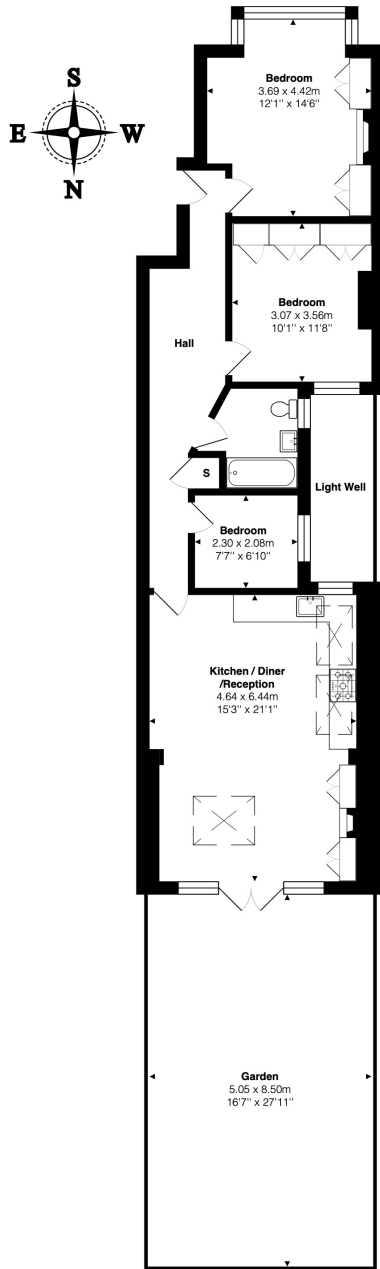
As part of the extension works, the side return and rear were done, as well as a dig down for extra height. This is now a spacious, bright and airy open plan space. There is fitted joinery and wood burner to create a cosy feel.

This space also provides direct access on to the private garden via full height Crittall doors. The garden is designed to be low maintenance, with patio area, raised beds and Astroturf. With its sought-after location, character and charm, viewing comes highly recommended.

winkworth.co.uk

Winkworth

See things differently



Ground Floor

Total Area: 78.1 m² ... 841 ft² (excluding light well, garden)

All measurements are approximate and for display purposes only

This floorplan is for illustration purposes only and is not to scale. The position and size of doors, windows, appliances and other features are approximate.

Kensal & Queens Park | 0208 960 4947 | kensalrise@winkworth.co.uk

Winkworth

winkworth.co.uk

See things differently

winkworth wishes to inform prospective buyers and tenants that these particulars are a guide and act as information only. All our details are given in good faith and believed to be correct at the time of printing but they don't form part of an offer or contract. No Winkworth employee has authority to make or give any representation or warranty in relation to this property. All fixtures and fittings, whether fitted or not are deemed removable by the vendor unless stated otherwise and room sizes are measured between internal wall surfaces, including furnishings.