



HAZLEWELL ROAD, SW15
£1,750 PER MONTH FURNISHED

A newly refurbished one bedroom ground floor flat with off street parking on a quiet residential street in Putney

Southfields | 020 8877 1000 | southfields@winkworth.co.uk

Winkworth

for every step...

winkworth.co.uk



DESCRIPTION:

This bright and spacious property has recently undergone a full refurbishment throughout. Situated on the ground floor of a well-maintained private block it further benefits from off street parking, bike storage and access to a lovely communal garden.

Towards the rear is a large sitting room with plenty of room for both living and dining, with a sofa bed, glass dining table and chairs. There is also extensive storage in the form of fitted shelves and cabinets.

At the front of the property is a generous double bedroom with an abundance of fitted wardrobes and black out curtains. The bedroom is serviced by a modern bathroom with bath and shower over. The kitchen has been fully equipped with all the necessary items as well as a breakfast bar and stools.

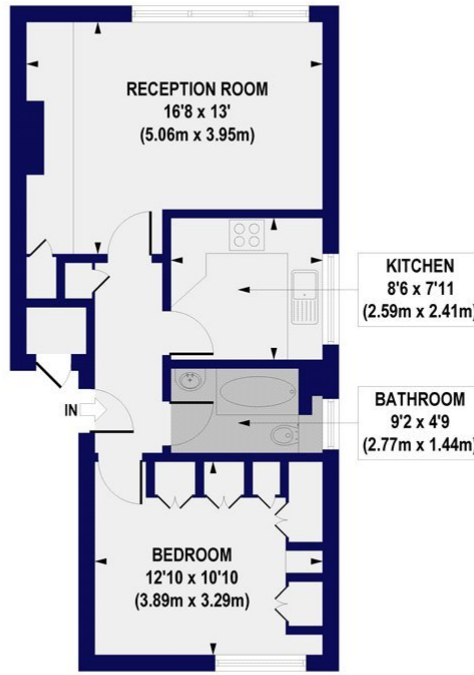
Hazlewell Road is a quiet residential street in West Putney a short walk from Putney Mainline (SW Rail) and East Putney Underground (District Line) stations. All the shops, restaurants, cafes and bars are also within easy reach.

ACCOMMODATION

Long Let, 1 Bedrooms, 1 Reception Rooms, 1 Bathrooms, Flat/Apartment, Ground Floor, Communal Gardens, Off Street Parking, Furnished, 511 Approx Sq Ft



Hazlewell Road, SW15
 Approx. Gross Internal Floor Area 511 sq. ft / 47.44 sq. m

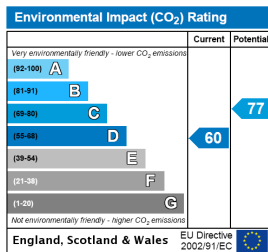
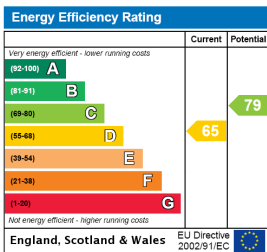


RAISED GROUND FLOOR

All measurements of walls, doors, windows, fittings and appliances, including their size and location, are shown as standard sizes and do not constitute any warranty or representation by the seller, their agent or CP Creative. Any intending purchaser must satisfy himself by inspection or otherwise as to the correctness of the information contained in these plans. This plan is for illustrative purposes only and should be used as such by any prospective purchasers.

Winkworth

This floorplan is for illustration purposes only and is not to scale. The position and size of doors, windows, appliances and other features are approximate.



Southfields | 020 8877 1000 | southfields@winkworth.co.uk



for every step...

winkworth.co.uk

Winkworth wishes to inform prospective buyers and tenants that these particulars are a guide and act as information only. All our details are given in good faith and believed to be correct at the time of printing but they don't form part of an offer or contract. No Winkworth employee has authority to make or give any representation or warranty in relation to this property. All fixtures and fittings, whether fitted or not are deemed removable by the vendor unless stated otherwise and room sizes are measured between internal wall surfaces, including furnishings.