



PERCY MANSIONS, MAYOW ROAD, LONDON, SE23
£360,000 LEASEHOLD

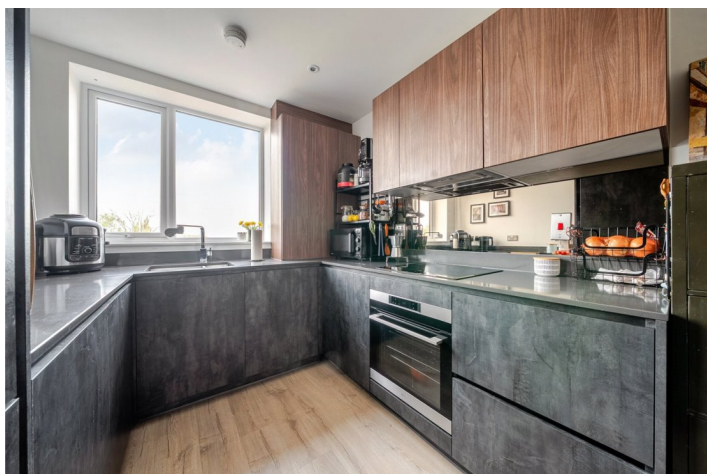
A STYLISH ONE-BEDROOM TOP-FLOOR APARTMENT IN A MODERN SECURE DEVELOPMENT!

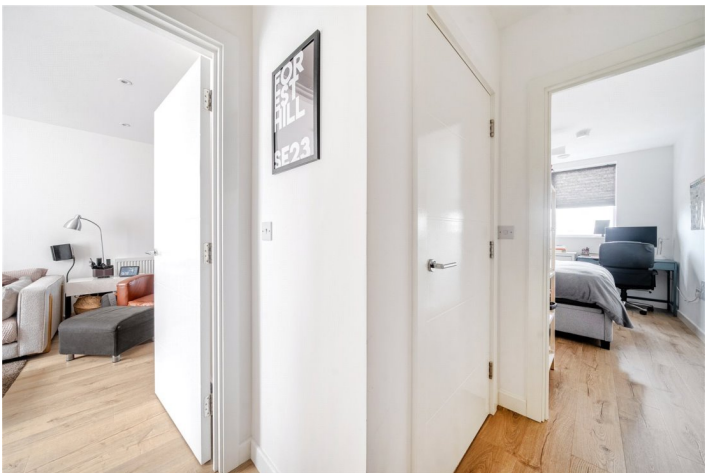
Forest Hill | | foresthill@winkworth.co.uk



DESCRIPTION:

A stylish one-bedroom top-floor apartment in a modern secure development just 0.4 miles from Forest Hill Station. Featuring a private balcony overlooking communal gardens, high-spec interiors, utility room, and long lease (996 years). Ideally located near Mayow Park and local amenities.

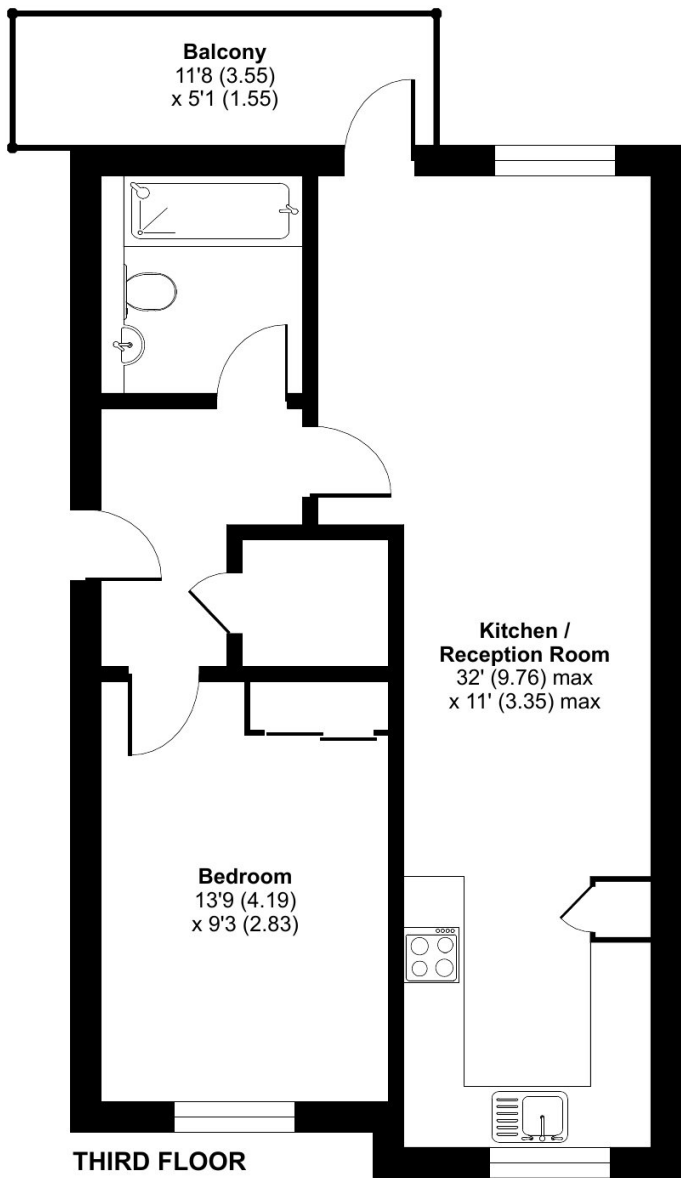




Mayow Road, London, SE23

Approximate Area = 567 sq ft / 52.6 sq m

For identification only - Not to scale



Floor plan produced in accordance with RICS Property Measurement Standards incorporating International Property Measurement Standards (IPMS2 Residential). © nlc/ecom 2025. Produced for Winkworth Forest Hill and New Cross. REF: 1279779

This floorplan is for illustration purposes only and is not to scale. The position and size of doors, windows, appliances and other features are approximate.

Score	Energy rating	Current	Potential
92+	A		
81-91	B	82 B	82 B
69-80	C		
55-68	D		
39-54	E		
21-38	F		
1-20	G		

Tenure: Leasehold

Term: 997 year and 11 months