

**BASIRE STREET, LONDON, N1**  
**£475,000 SHARE OF FREEHOLD**

## A FANTASTIC ONE BEDROOM APARTMENT IN THE HEART OF ISLINGTON

Islington | 0207 354 2480 | [islington@winkworth.co.uk](mailto:islington@winkworth.co.uk)

**Winkworth**

[winkworth.co.uk](http://winkworth.co.uk)

See things differently



## DESCRIPTION:

Set across the raised ground floor of this charming, well-maintained block in Islington is this wonderful one bedroom flat. Accommodation includes a master bedroom with inbuilt storage, bathroom, separate kitchen, and a bright and airy reception room. The property further benefits from a share of the freehold, a small communal garden, secure bike storage and a secure off-street parking space.

Basire Street is within easy reach of the boutiques, bars and restaurants of Upper Street as well as moments from Regents Canal. The closest tubes can be found at Angel and Highbury & Islington stations whilst Old Street and Essex Road overground lines are also within easy reach. Numerous bus routes provide easy access to the City and West End and international travel is made easy from Kings Cross St. Pancras.

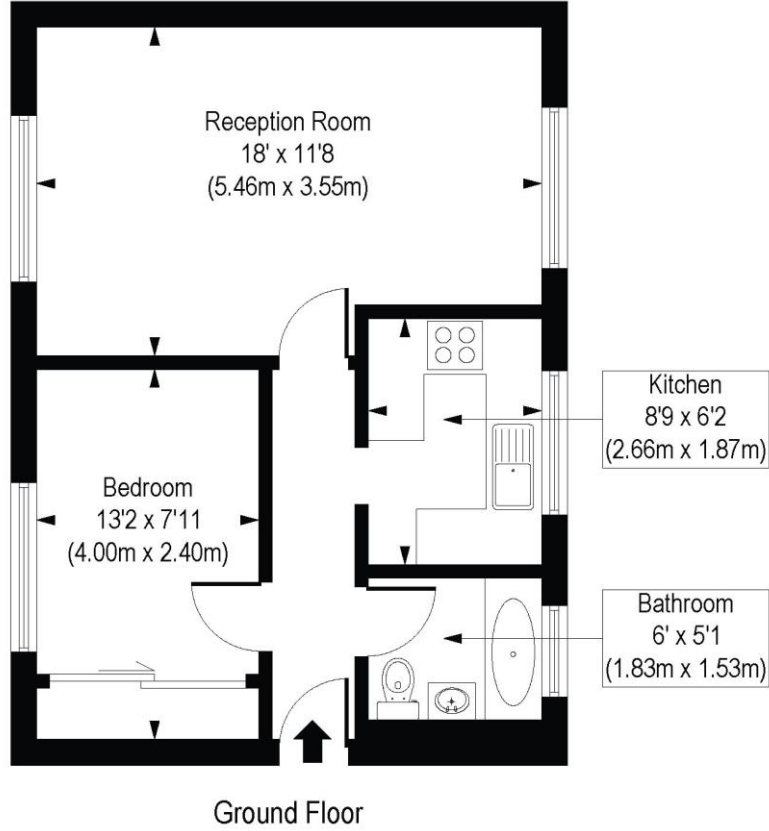
**Winkworth**



**Winkworth**

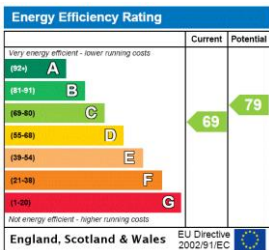
# Basire Street, N1

Approx. Gross Internal Floor Area 448 sq. ft / 41.62 sq. m



COMPLIANT WITH RICS CODE OF MEASURING PRACTICE. Floorplan is for illustrative purposes only and is not to scale. Every attempt has been made to ensure the accuracy of the floorplan shown, however all measurements, fixtures, fittings and data shown are an approximate interpretation for illustrative purposes only. Liability for errors, omissions or mis-statement through negligence or otherwise is hereby excluded.

This floorplan is for illustration purposes only and is not to scale. The position and size of doors, windows, appliances and other features are approximate.



Islington | 0207 354 2480 | islington@winkworth.co.uk



winkworth.co.uk

See things differently

Winkworth wishes to inform prospective buyers and tenants that these particulars are a guide and act as information only. All our details are given in good faith and believed to be correct at the time of printing but they don't form part of an offer or contract. No Winkworth employee has authority to make or give any representation or warranty in relation to this property. All fixtures and fittings, whether fitted or not are deemed removable by the vendor unless stated otherwise and room sizes are measured between internal wall surfaces, including furnishings.