



Aberford Road, Hertfordshire, WD6

£450,000 *Freehold*

3  1  1 

Chain Free Three Bedroom Terraced House in Borehamwood

KEY FEATURES

- Three Bedrooms
- Chain Free
- Guest Cloakroom
- 1019 Square Feet
- Scope To Extend (STPP)



Borehamwood

020 8953 8899 | borehamwood@winkworth.co.uk



Offered for sale on a chain free basis is this three-bedroom tunnel linked family house. Exceeding 1000 square feet, the house requires some modernisation and offers scope for extension subject to the usual planning consents.

This property is conveniently located and offers easy access to several main arterial roads, including the A1, M1 and M25 as well as bus routes to Barnet, Edgware and Colindale and Borehamwood Thameslink station with its quick and convenient service into central London and beyond.

Ideal for both first-time buyers and investors alike. Don't miss out on this affordable and attractive opportunity.

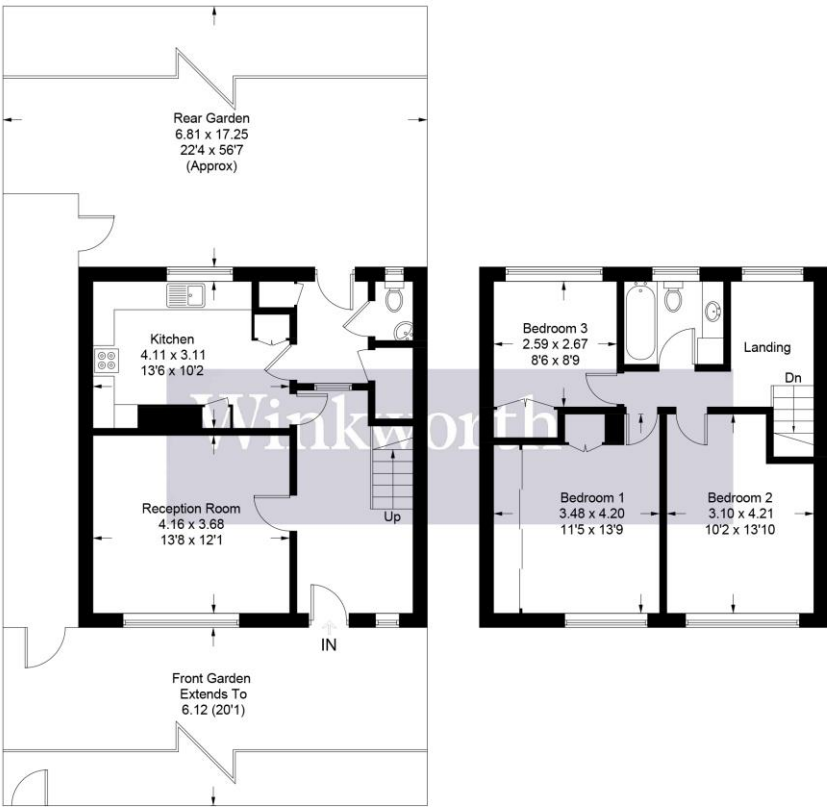




MATERIAL INFO

Tenure: Freehold
Term: 0 year and 0 months
Service Charge: £0 per annum
Ground Rent: £ 0 Annually (subject to increase)
Council Tax Band: D
EPC rating: D

Approximate Gross Internal Area = 94.7 sq m / 1019 sq ft



Ground Floor

First Floor

Illustration for identification purposes only, measurements are approximate, not to scale. Winkworth © 2025 (ID1232447)

Score	Energy rating	Current	Potential
92+	A		
81-91	B		
69-80	C		
55-68	D		
39-54	E		
21-38	F		
1-20	G		

55 D

81 B

For more information, scan the QR code or visit the link below



<https://www.winkworth.co.uk/sale/property/BOR240400>

Where no figures are shown, we have been unable to ascertain the information. All figures that are shown were correct at the time of printing.

Borehamwood

020 8953 8899 | borehamwood@winkworth.co.uk

Winkworth wishes to inform prospective buyers and tenants that these particulars are a guide and act as information only. All our details are given in good faith and believed to be correct at the time of printing but they don't form part of an offer or contract. No Winkworth employee has authority to make or give any representation or warranty in relation to this property. All fixtures and fittings, whether fitted or not are deemed removable by the vendor unless stated otherwise and room sizes are measured between internal wall surfaces, including furnishings.