



# 67, Onslow Gardens

London, SW7 3QD

*Fantastic two double bedroom flat on Onslow Gardens with views over gardens.*

A spacious two double bedroom apartment situated on the third floor of this elegant stucco fronted Victorian building in this premier South Kensington address.

Well-presented throughout, you have a dual aspect with views from the drawing room over the gated gardens to the west. Two double bedrooms are set at the rear of the property and have been newly decorated.

67 Onslow Gardens is a well-managed block with charming communal parts. Also benefiting the gated private gardens, the discerning purchaser can enjoy an idyllic place to relax.

Onslow Gardens is a prestigious South Kensington address and is equidistant from South Kensington and Gloucester Road underground stations and is ideally located for the bars, restaurants and other amenities on both Old Brompton Road and Fulham Road.

**Asking Price:** £1,399,950 Subject to Contract

**Tenure:** Share of Freehold (989yrs remaining)

**Local Authority:** The Royal Borough of Kensington & Chelsea

**Council tax band:** G

**Service Charge:** £7,148pa

**Ground Rent:** Peppercorn





**Share of Freehold | Two Double Bedrooms | Communal Gardens**

# ONSLow GARDENS, SW7

APPROXIMATE GROSS INTERNAL AREA

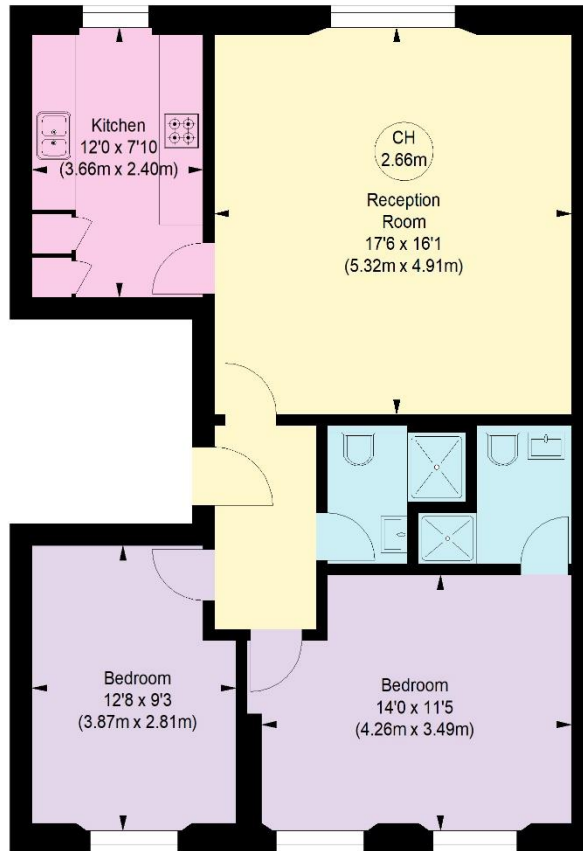
777 Ft<sup>2</sup> - 72.18 M<sup>2</sup>

Illustration For Identification Only. Not To Scale.

All Calculations include Any/All Areas Under 1.5m Head Height.

\* As Defined by RICS - Code of Measuring Practice.

Key :  
CH - Ceiling Height



**Winkworth**

THIRD FLOOR

Energy Efficiency Rating		Current	Potential
Very energy efficient - lower running costs			
(92+)	<b>A</b>		
(81-91)	<b>B</b>		
(69-80)	<b>C</b>	<b>75</b>	<b>82</b>
(55-68)	<b>D</b>		
(39-54)	<b>E</b>		
(21-38)	<b>F</b>		
(1-20)	<b>G</b>		
Not energy efficient - higher running costs			
England, Scotland & Wales		EU Directive 2002/91/EC	