



Bulwer Street, London, W12

£775,000 Freehold

A three-bedroom family home in the heart of Shepherds Bush, requiring modernisation with excellent potential to extend into the loft (STPP).

Reception Room | Kitchen | 3 Bedrooms | Bathroom | Patio | 872 Sq Ft / 81 Sq M | Council Tax Band E | EPC Rating Band D

Winkworth

winkworth.co.uk

for every step...



LOCATION

Bulwer street is a surprisingly quiet residential road tucked away in the ever popular 'Caxton village' area just north of Shepherds Bush Green. Moments from the shopping and transport facilities on offer at Westfield London, Overground rail, Central, Hammersmith and City and Circle line Stations.

Also just a short walk from the open spaces of Shepherds Bush Green and Holland Park.

DESCRIPTION

This three bedroom Victorian home has lots of character, curb appeal and excellent potential to be extended into the loft. (STPP).

Set over two floors: the ground floors offers a bay fronted reception room to the front, open plan kitchen/dining area to the rear, downstairs bathroom and utility room with direct access to a private patio.

On the first floor there are three bedrooms, two double bedrooms and one single bedroom.

The property has the option to extend extensively into the loft space above as many others on the road have done (STPP). The house is offered to the market with no onward chain.





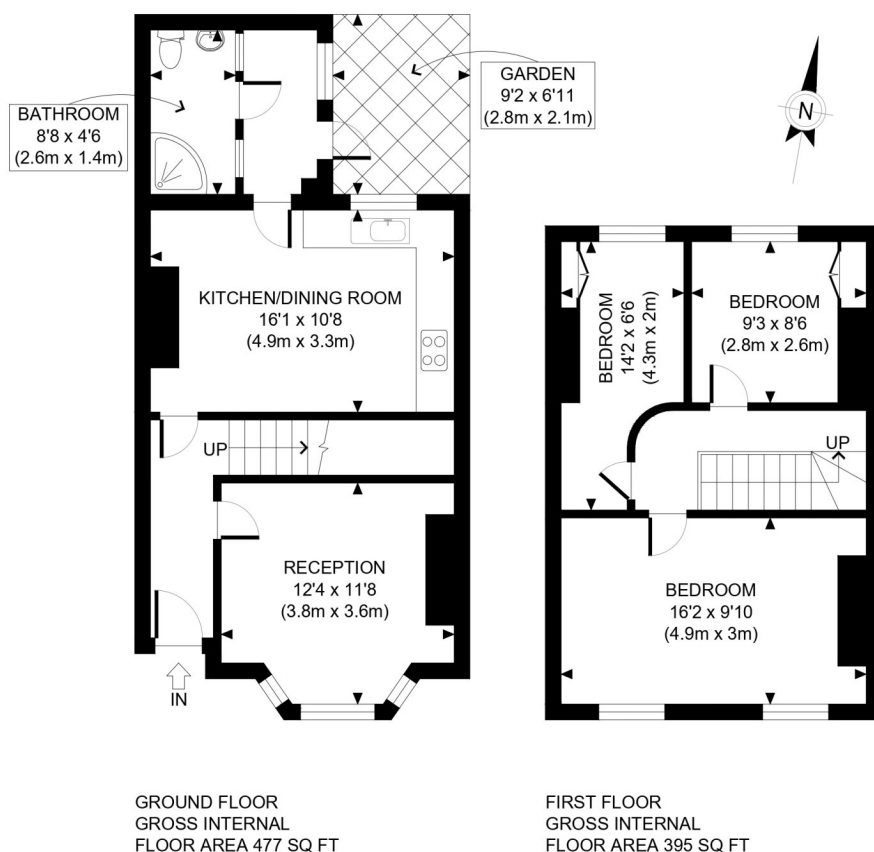
LOCAL AUTHORITY
Hammersmith & Fulham

TENURE
Freehold.

PRICE: £775,000 Freehold



Score	Energy rating	Current	Potential
92+	A		
81-91	B		
69-80	C		79 C
55-68	D	67 D	
39-54	E		
21-38	F		
1-20	G		



APPROX. GROSS INTERNAL FLOOR AREA: 872 SQ FT/ 81 SQM

Winkworth

BULWER STREET, W12

This plan is for illustrative purposes only and should be used as such by any prospective client. Whilst every attempt has been made to ensure the accuracy of the Floor Plan contained here, measurements of the doors, windows, rooms and any other items are approximate and no responsibility is taken for any errors, omissions, or misstatement. The services, systems and appliances shown have not been tested and no guarantee as to the operability or efficiency can be given.

PROPERTY PHOTO PLANS .CO.UK
THE STOP SHOP FOR PROPERTY MEASUREMENTS

The displayed square footage is taken from the floor plans with measurements created using the Royal Institute of Chartered Surveyors' Code of Practice for Measuring. These measurements are approximate and included for illustrative purposes only. Winkworth does not make any representation as to the accuracy of these measurements and you should seek to verify them for yourself. Winkworth accept no liability for any loss you may suffer if you rely on these measurements.

Shepherds Bush | 020 8735 3266 | shepherdsbush@winkworth.co.uk

Winkworth

for every step...

Under the Property Misdescriptions Act 1991, these Particulars are a guide and act as information only. All details are given in good faith and are believed to be correct at time of printing. Winkworth give no representation as to their accuracy and potential purchasers or tenants must satisfy themselves by inspection or otherwise as to their correctness. No employee of Winkworth has authority to make or give any representation or warranty in relation to this property.