



WALTON TERRACE, ELSTREE, BOREHAMWOOD, WD6
£400,000 SHARE OF FREEHOLD

CHAIN FREE TWO BEDROOM TWO BATHROOM MAISONETTE

Borehamwood | 020 8953 8899 | borehamwood@winkworth.co.uk



DESCRIPTION:

Winkworth are delighted to offer for sale a rare opportunity to purchase this two double bedroom two bathroom ground floor maisonette offered on a chain free basis.

Situated in Elstree Village this property is conveniently located for the local shops and transport facilities of both Borehamwood Town centre and Elstree.

The property is offered on a chain free basis and benefits from a modern fully fitted kitchen/breakfast room, dual aspect living room, master bedroom with ensuite shower room, further double bedroom, family bathroom communal gardens accessed from both the kitchen and living room as well as an allocated parking space.

AT A GLANCE

- 2 Bedrooms
- Entrance Hall
- Kitchen Dining Room
- Living Room
- Ensuite Bathroom
- Patio





Approximate Gross Internal Area = 78.9 sq m / 849 sq ft

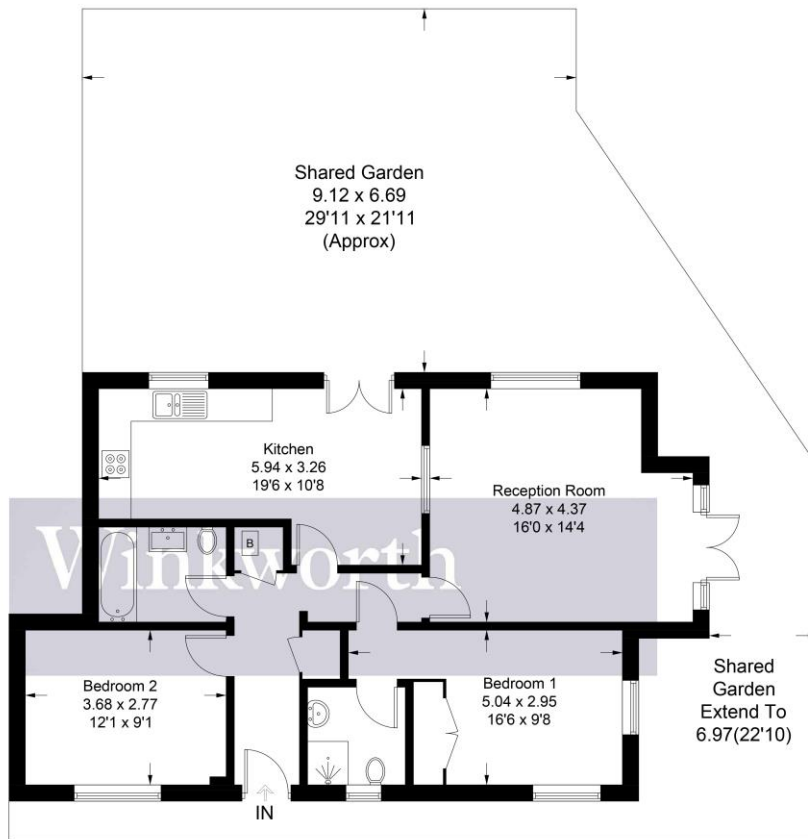
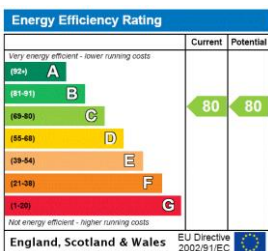


Illustration for identification purposes only, measurements are approximate, not to scale. Winkworth © 2025 (ID1192057)

This floorplan is for illustration purposes only and is not to scale. The position and size of doors, windows, appliances and other features are approximate.



Tenure: Share of Freehold

Term: 108 year and 8 months

Service Charge: £350 per annum

Ground Rent: £ 0 Annually (subject to increase)

Council Tax Band: D

Where no figures are shown, we have been unable to ascertain the information. All figures that are shown were correct at the time of printing.