



EAST DULWICH ROAD, EAST DULWICH, SE22  
£850,000 SHARE OF FREEHOLD

ONE OF THE MOST STUNNING SPLIT-LEVEL  
FLATS AVAILABLE TO THE MARKET IN SE22.

Dulwich | 020 8299 2722 | [dulwich@winkworth.co.uk](mailto:dulwich@winkworth.co.uk)

**Winkworth**

[winkworth.co.uk](http://winkworth.co.uk)

See things differently



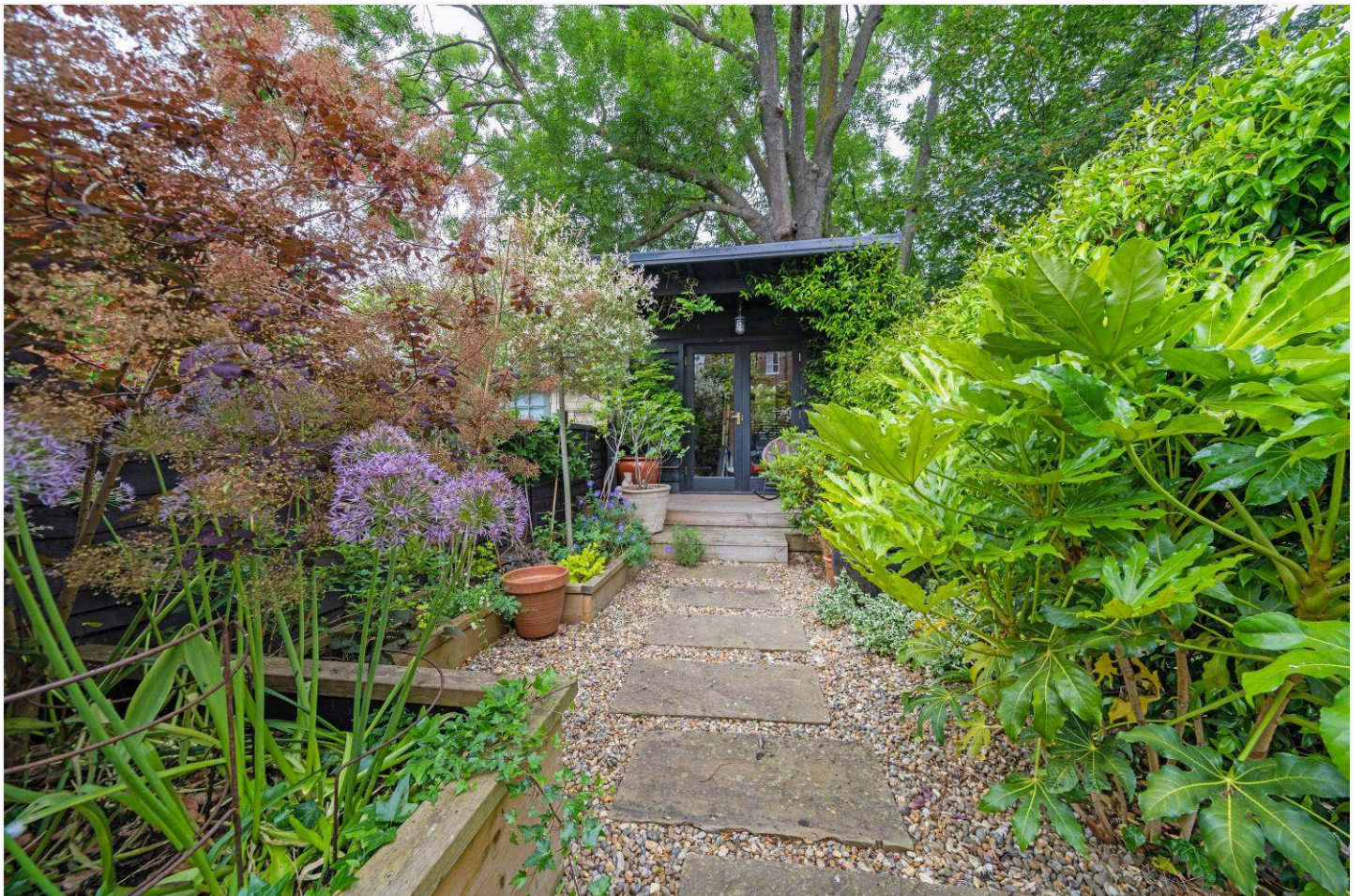
## DESCRIPTION:

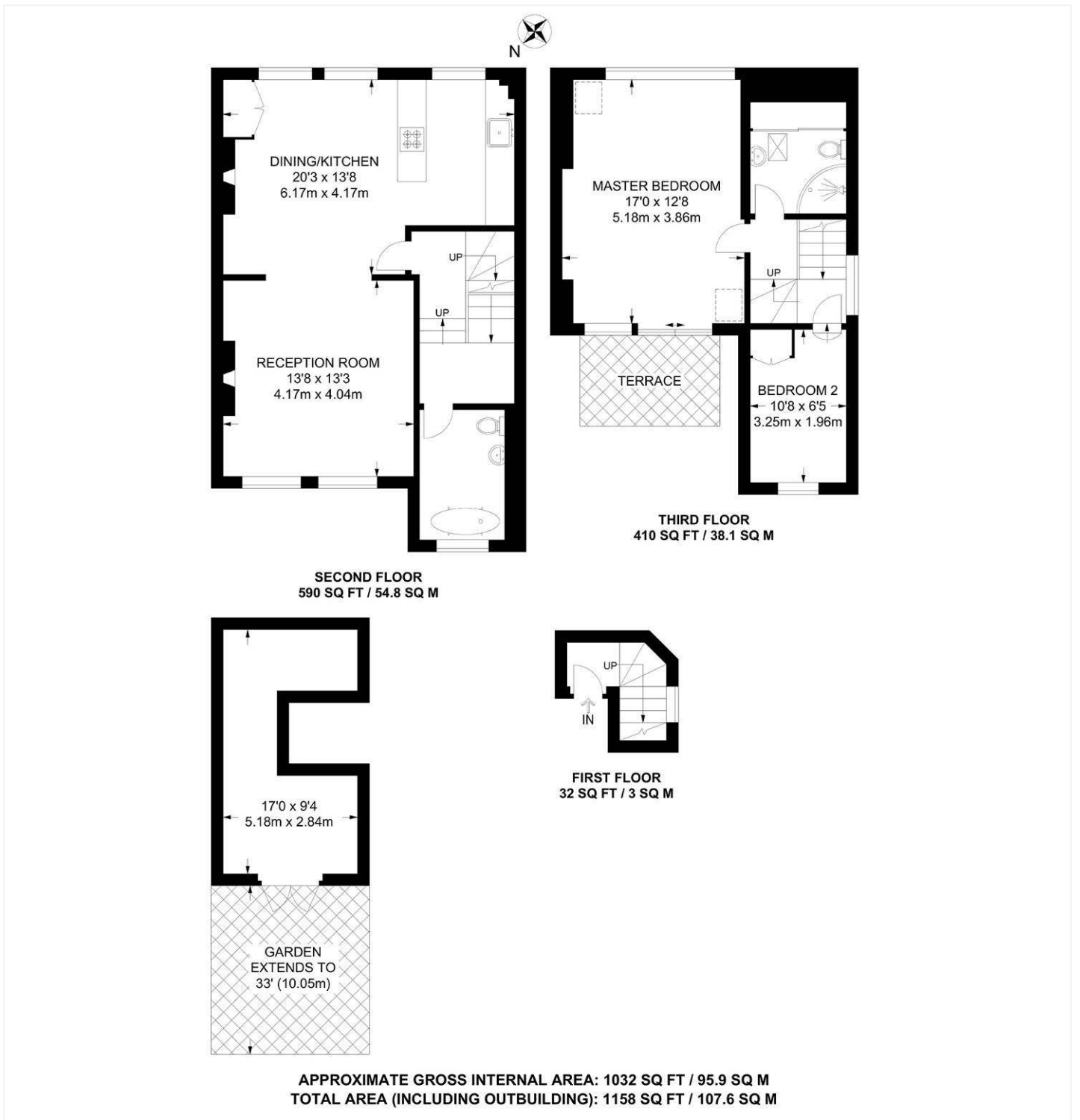
This stunning and millimetre perfect flat is offered to the market in wonderful condition. The property has been a labour of love to the vendors for many years that now feel the time to move on to the next project. The property spans over two floors beautifully incorporating Victorian charm with modern finishes. The main floor comprises an open-plan kitchen reception, complete with stunning original wood flooring, original fireplaces and bespoke joinery. The kitchen is bespoke, and boasts built-in appliances, such as quooker tap and bora hob, breakfast bar, marble worktops and splash backs. The main floor looks over Goose Green to the front and the extensive, large gardens to the rear, you really don't feel like you are in London with the views on offer. The main floor further houses the family bathroom, complete with an Albion rolltop bath, wood flooring and views of the gardens to rear. Upstairs comprises the second bedroom and the top floor has been converted into a spectacular master en-suite bedroom, comprising a private roof terrace and all finished to an impeccable standard. The property further boasts a private section of garden, landscaped beautifully and offering a summer house/ home office. The location is perfect, everything this wonderful area has to offer is within a short walk, bars, restaurants and shops are found within a short 30 second walk to Lordship Lane or a 10-minute walk to Bellenden Road for an array of independent butchers, shops and restaurants. Transport links are provided via East Dulwich for direct links to London Bridge, or Peckham Rye for the overground. This is a stunning flat in a superb location and early viewings are highly recommended.

## AT A GLANCE

- Two Bedrooms
- Split Level Flat
- Open plan Kitchen-Diner
- Bathroom
- Garden
- Balcony
- Central Location







This floorplan is for illustration purposes only and is not to scale. The position and size of doors, windows, appliances and other features are approximate.

Dulwich | 020 8299 2722 | [dulwich@winkworth.co.uk](mailto:dulwich@winkworth.co.uk)



[winkworth.co.uk](http://winkworth.co.uk)

See things differently

Winkworth wishes to inform prospective buyers and tenants that these particulars are a guide and act as information only. All our details are given in good faith and believed to be correct at the time of printing but they don't form part of an offer or contract. No Winkworth employee has authority to make or give any representation or warranty in relation to this property. All fixtures and fittings, whether fitted or not are deemed removable by the vendor unless stated otherwise and room sizes are measured between internal wall surfaces, including furnishings.