



## St Stephen's Walk, South Kensington, London, SW7

£550 per week\* / £2,383.33 per month – Part Furnished

Located on a gated, tree-lined walkway moments from Gloucester Road, a charming one-bedroom apartment with patio.

1 Bedroom | 1 Reception Room | 1 Bathroom | Ground Floor Flat | Patio | 513 Approx sq ft | EPC: C

APPLICANT FEES MAY BE APPLICABLE  
DEPOSIT OF 5 WEEKS' RENT  
HOLDING DEPOSIT OF 1 WEEK'S RENT

**Winkworth**

[winkworth.co.uk](http://winkworth.co.uk)

for every step...





## DESCRIPTION

With wooden floors throughout, this bright, well-proportioned flat features a fully-fitted kitchen, contemporary shower room, spacious reception room with doors out to the patio, and good-sized double bedroom. Located on the lower ground floor, the property offers two patios (one shared) and is moments from all the amenities and transport links of South Kensington. The flat is available from the end June on a furnished basis.



### ACCOMMODATION

1 Bedroom, 1 Reception Room,  
1 Bathroom, Ground Floor Flat, Patio,  
Part-Furnished, 513 Approx Sq ft

### COUNCIL TAX BAND

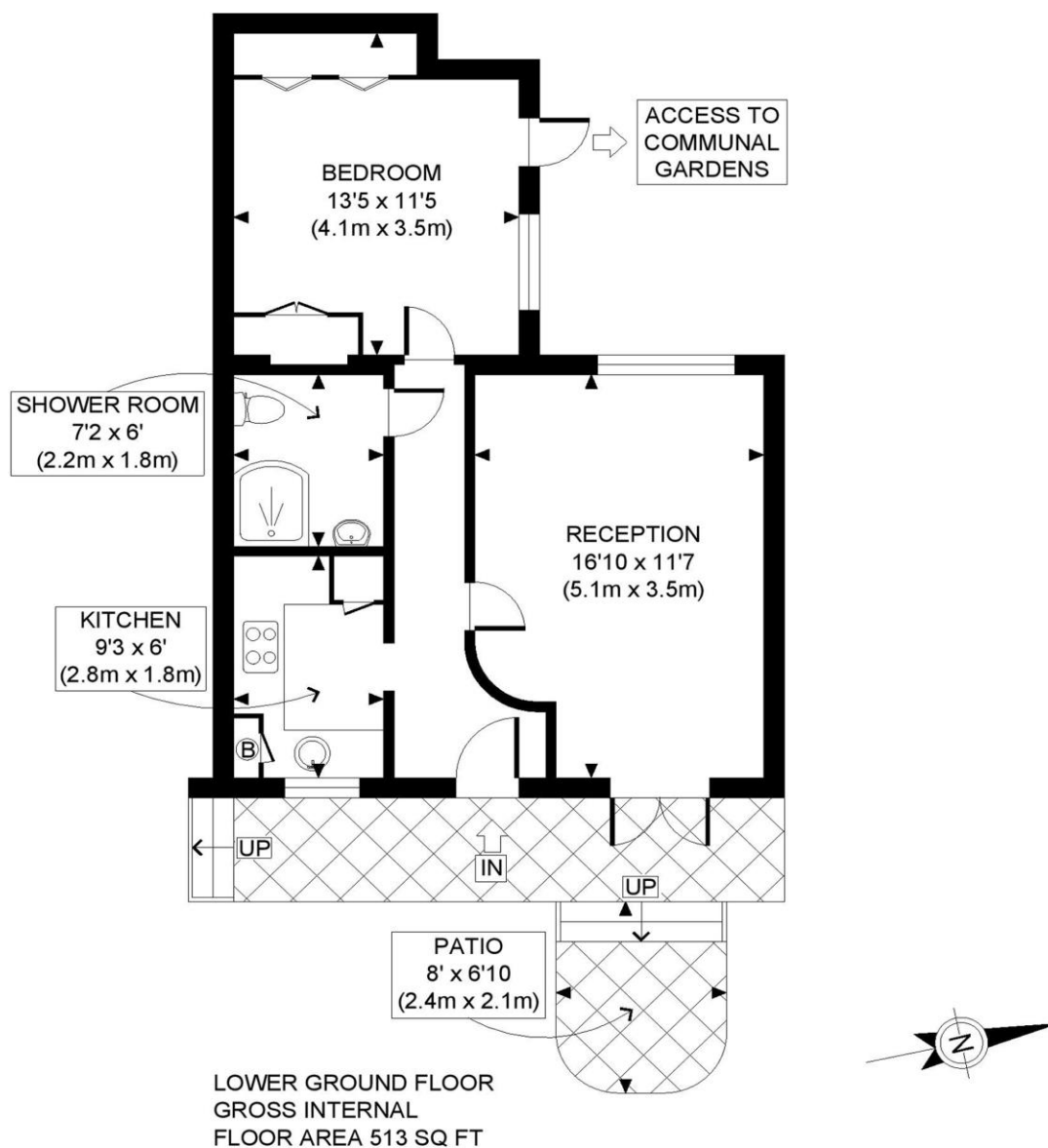
Band F



Energy Efficiency Rating		
	Current	Potential
Very energy efficient - lower running costs		
(92+) <b>A</b>		
(81-91) <b>B</b>		
(69-80) <b>C</b>	72	78
(55-68) <b>D</b>		
(39-54) <b>E</b>		
(21-38) <b>F</b>		
(1-20) <b>G</b>		
Not energy efficient - higher running costs		
England, Scotland & Wales	EU Directive 2002/91/EC	







APPROX. GROSS INTERNAL FLOOR AREA: 513 SQ FT/ 48 SQM

**Winkworth**

This plan is for illustrative purposes only and should be used as such by any prospective client. Whilst every attempt has been made to ensure the accuracy of the Floor Plan contained here, measurements of the doors, windows, rooms and any other items are approximate and no responsibility is taken for any errors, omissions, or misstatement. The services, systems and appliances shown have not been tested and no guarantee as to the operability or efficiency can be given.

**PROPERTY PHOTO PLANS**  
ONE STOP SHOP FOR PROPERTIES MARKETING

*This floorplan is for illustration purposes only and is not to scale. The position and size of doors, windows, appliances and other features are approximate.*

*\*Please note, the rent cannot be paid on a weekly basis*

**South Kensington Lettings | 020 7370 6767 | [lettings.southken@winkworth.co.uk](mailto:lettings.southken@winkworth.co.uk)**

**[winkworth.co.uk](http://winkworth.co.uk)**

**for every step...**

Winkworth wishes to inform prospective buyers and tenants that these particulars are a guide and act as information only. All our details are given in good faith and believed to be correct at the time of printing but they don't form part of an offer or contract. No Winkworth employee has authority to make or give any representation or warranty in relation to this property. All fixtures and fittings, whether fitted or not are deemed removable by the vendor unless stated otherwise and room sizes are measured between internal wall surfaces, including furnishings.

**Winkworth**