



BUCKLE STREET, LONDON, E1  
**£875,000 LEASEHOLD**

## A GENEROUS 978 SQ.FT. TWO BEDROOM TWO BATHROOM MODERN APARTMENT IN A BOUTIQUE DEVELOPMENT

Shoreditch | 020 7749 7650 | [shoreditch@winkworth.co.uk](mailto:shoreditch@winkworth.co.uk)

**Winkworth**



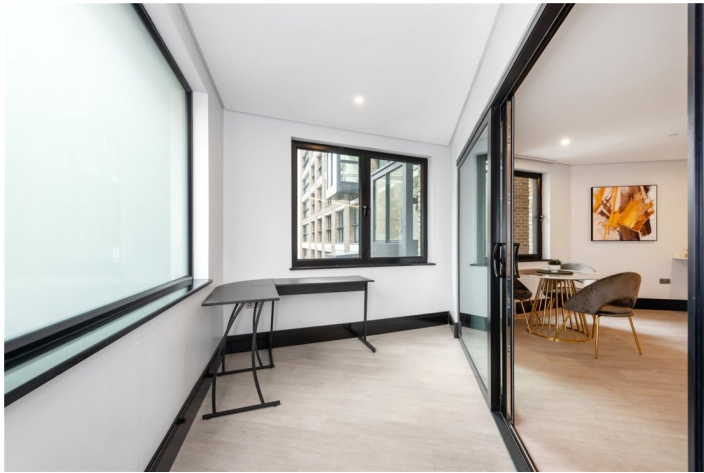
## DESCRIPTION:

A stylish and modern two double bedroom, two-bathroom apartment located on the 3rd floor of a modern boutique development which offers only one flat per floor. The apartment has been finished to a high specification throughout and boasts underfloor heating, video entry system, ceiling to floor windows, fully fitted kitchen, and secure cycle storage.

Measuring a generous 978 sq. ft., this stunning property boasts plenty of fitted storage spaces and very airy rooms. It briefly comprises a very large reception with a sleek open-plan fully-fitted kitchen, leading into a study separated from the reception by lovely French doors; a large master bedroom including a stylish ensuite shower room; a spacious second double bedroom with a fitted wardrobe; a contemporary family bathroom.

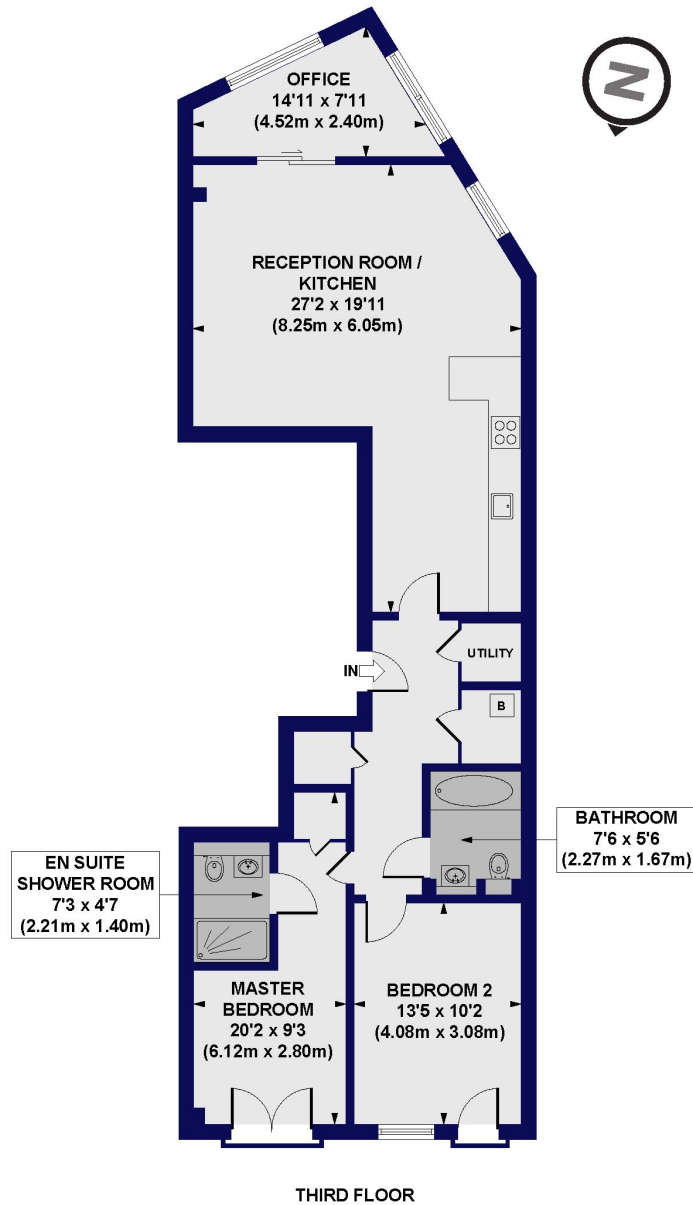
The property is enviably located moments from Aldgate East and Aldgate underground stations, you are within walking distance of Whitechapel and Liverpool Street Station offering excellent access across the City and major airports. There is an array of local amenities as well as Brick Lane and Spitalfields market close by with a range of boutique shops, art galleries, cafes, bars and restaurants.

**Winkworth**



**Winkworth**

**Buckle Street, E1**  
**Approx. Gross Internal Floor Area 978 sq. ft / 90.88 sq. m**



All measurements of walls, doors, windows, fittings and appliances, including their size and location, are shown as standard sizes and do not constitute any warranty or representation by the seller, their agent or CP Creative. Any intending purchaser must satisfy himself by inspection or otherwise as to the correctness of the information contained in these plans. This plan is for illustrative purposes only and should be used as such by any prospective purchasers.



This floorplan is for illustration purposes only and is not to scale. The position and size of doors, windows, appliances and other features are approximate.

Energy Efficiency Rating		Current	Potential
Very energy efficient - lower running costs			
(92-100) <b>A</b>		87	87
(81-91) <b>B</b>			
(69-80) <b>C</b>			
(55-68) <b>D</b>			
(39-54) <b>E</b>			
(21-38) <b>F</b>			
(1-20) <b>G</b>			
Not energy efficient - higher running costs			
England, Scotland & Wales	EU Directive 2002/91/EC		

Shoreditch | 020 7749 7650 | shoreditch@winkworth.co.uk



winkworth.co.uk

See things differently

Winkworth wishes to inform prospective buyers and tenants that these particulars are a guide and act as information only. All our details are given in good faith and believed to be correct at the time of printing but they don't form part of an offer or contract. No Winkworth employee has authority to make or give any representation or warranty in relation to this property. All fixtures and fittings, whether fitted or not are deemed removable by the vendor unless stated otherwise and room sizes are measured between internal wall surfaces, including furnishings.