

SELBY STREET, LONDON, E1
£400,000 LEASEHOLD

CHARMING ONE BEDROOM APARTMENT IN BETHNAL GREEN

Shoreditch | 020 7749 7650 | shoreditch@winkworth.co.uk

Winkworth

winkworth.co.uk

See things differently



DESCRIPTION:

This charming one bedroom apartment offers a comfortable and convenient living space.

Located on the first floor, this 496 sqft home is perfect for those seeking a compact yet functional space. The property is also chain-free, which is an added bonus.

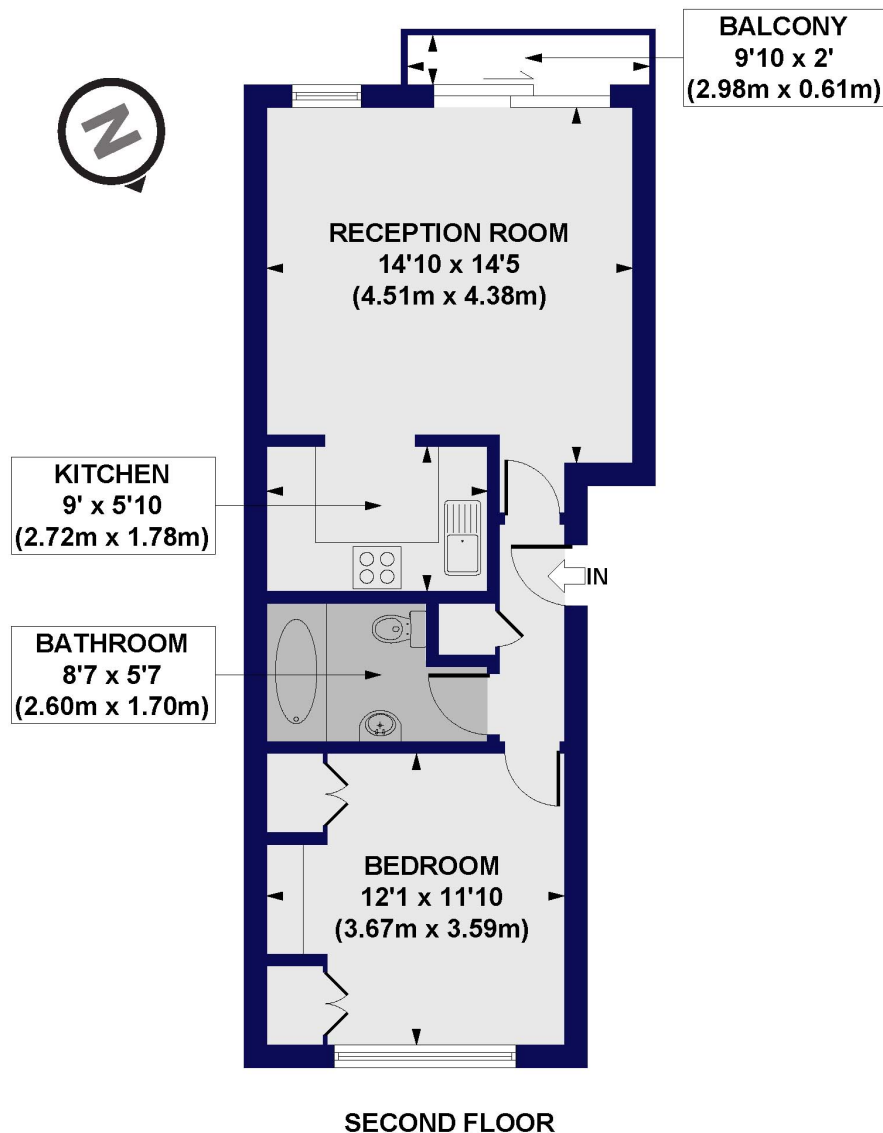
With excellent transport links nearby, commuting and accessing local amenities is a breeze. Whether you're a first-time buyer or looking for a manageable investment, this property is an excellent choice.

Winkworth



Winkworth

Selby Street, E1
Approx. Gross Internal Floor Area 496 sq. ft / 46.07 sq. m



All measurements of walls, doors, windows, fittings and appliances, including their size and location, are shown as standard sizes and do not constitute any warranty or representation by the seller, their agent or CP Creative. Any intending purchaser must satisfy himself by inspection or otherwise as to the correctness of the information contained in these plans. This plan is for illustrative purposes only and should be used as such by any prospective purchasers.

Winkworth

This floorplan is for illustration purposes only and is not to scale. The position and size of doors, windows, appliances and other features are approximate.

Score	Energy rating	Current	Potential
92+	A		
81-91	B		
69-80	C	76 C	86 B
55-68	D		
39-54	E		
21-38	F		
1-20	G		

<https://www.winkworth.co.uk/sale/property/SHO210167>

Tenure: Leasehold

Term: 106 year and 4 months

Service Charge: £0 per annum

Ground Rent: £ 300 Annually (subject to increase)

Council Tax Band: C

Where no figures are shown, we have been unable to ascertain the information. All figures that are shown were correct at the time of printing.

Shoreditch | 020 7749 7650 | shoreditch@winkworth.co.uk

Winkworth

winkworth.co.uk

See things differently

Winkworth wishes to inform prospective buyers and tenants that these particulars are a guide and act as information only. All our details are given in good faith and believed to be correct at the time of printing but they don't form part of an offer or contract. No Winkworth employee has authority to make or give any representation or warranty in relation to this property. All fixtures and fittings, whether fitted or not are deemed removable by the vendor unless stated otherwise and room sizes are measured between internal wall surfaces, including furnishings.