



**EWELL ROAD, SURBITON, KT6**  
**£1,500 PER MONTH FURNISHED**

**WINKWORTH SURBITON PRESENT THIS 3  
BEDROOM FLAT WHICH IS IDEAL FOR  
SHARERS/STUDENTS.**

**Surbiton | 02038610010 | [surbiton@winkworth.co.uk](mailto:surbiton@winkworth.co.uk)**

**Winkworth**

Tenant Fees Apply: Details of fees for tenant referencing, tenancy agreement admin fees and renewal fees are available on the Winkworth website and the link can be found with the displayed rent for the property. Tenants should ensure they are fully conversant with these upfront fees and other costs that are involved at the outset of the tenancy before making an offer to rent and your local Winkworth office will provide written details upon request.

*[winkworth.co.uk](http://winkworth.co.uk)*

See things differently

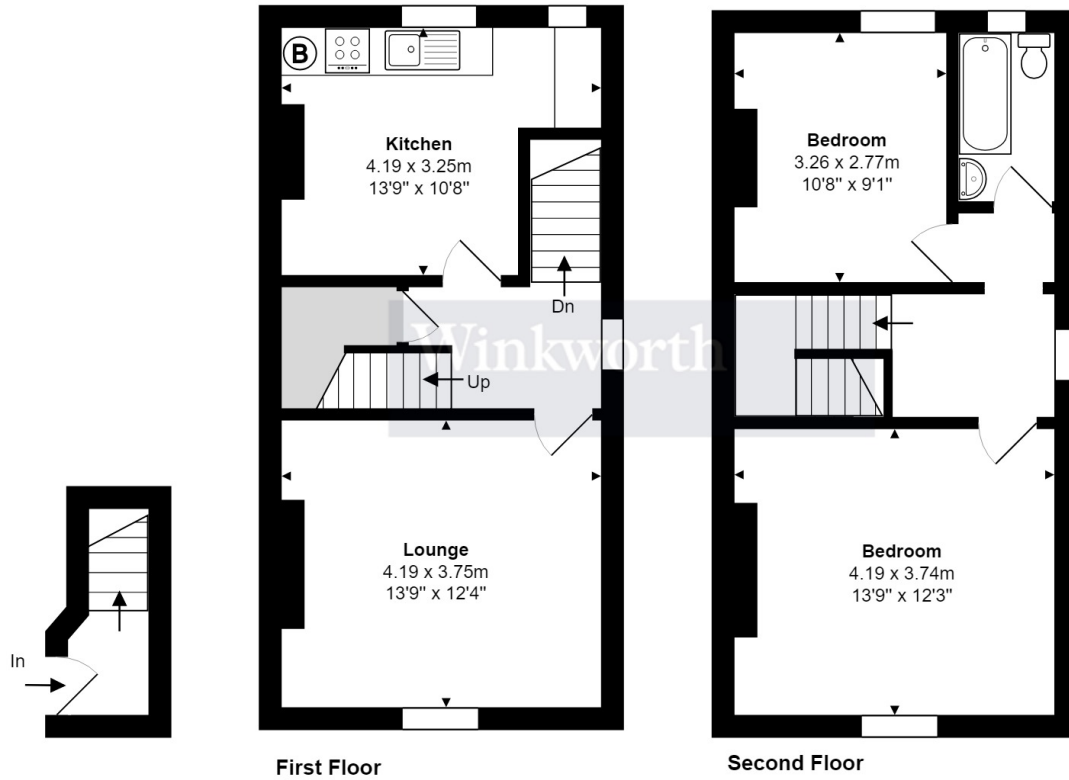


**Winkworth**



**Winkworth**

### First Floor Flat



### Ewell Road, Surbiton

Total Area: 73.0 m<sup>2</sup> ... 785 ft<sup>2</sup>

FOR ILLUSTRATIVE PURPOSES ONLY.

Whilst every attempt has been made to ensure the accuracy of the floor plan shown, all measurements, positioning, fixtures, features, fittings and any other data shown are an approximate interpretation for illustrative purposes only and are not to scale.

No responsibility is taken for any error, omission, miss-statement or use of data shown.

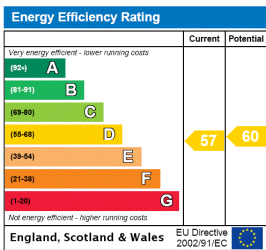
The above statement applies to both 'Still Moving London LTD' and the Company or individual displaying this floor plan.

Unauthorised reproduction prohibited.

© Still Moving London LTD (www.stillmoving.london)

**Winkworth**

This floorplan is for illustration purposes only and is not to scale. The position and size of doors, windows, appliances and other features are approximate.



Surbiton | 02038610010 | surbiton@winkworth.co.uk

**Winkworth**

winkworth.co.uk

See things differently

Winkworth wishes to inform prospective buyers and tenants that these particulars are a guide and act as information only. All our details are given in good faith and believed to be correct at the time of printing but they don't form part of an offer or contract. No Winkworth employee has authority to make or give any representation or warranty in relation to this property. All fixtures and fittings, whether fitted or not are deemed removable by the vendor unless stated otherwise and room sizes are measured between internal wall surfaces, including furnishings.