



HOPWOOD CLOSE, SW17
OIEO £650,000 FREEHOLD

NO ONWARD CHAIN - THIS FABULOUS TWO BEDROOM FAMILY HOME HAS BEEN BEAUTIFULLY MAINTAINED THROUGHOUT

Tooting | 020 8767 5221 | tooting@winkworth.co.uk 17 Upper Tooting Road, London, SW17 7TS

Winkworth

for every step...

winkworth.co.uk



DESCRIPTION

NO ONWARD CHAIN - This fabulous two bedroom family home has been beautifully maintained and by the current owners, quietly tucked away in a small development. The house comprises small entrance hall with storage, leading into a stunning large reception room with wooden flooring. At the rear of the house is an impressive shaker style kitchen with ample storage and views over the garden. A back door opens onto the private garden that has been well maintained. On the ground floor is a small under stairs cloakroom.

The first floor comprises of two glorious double bedroom and a beautiful modern family bathroom. There is the potential to extend into the loft subject the necessary permissions.

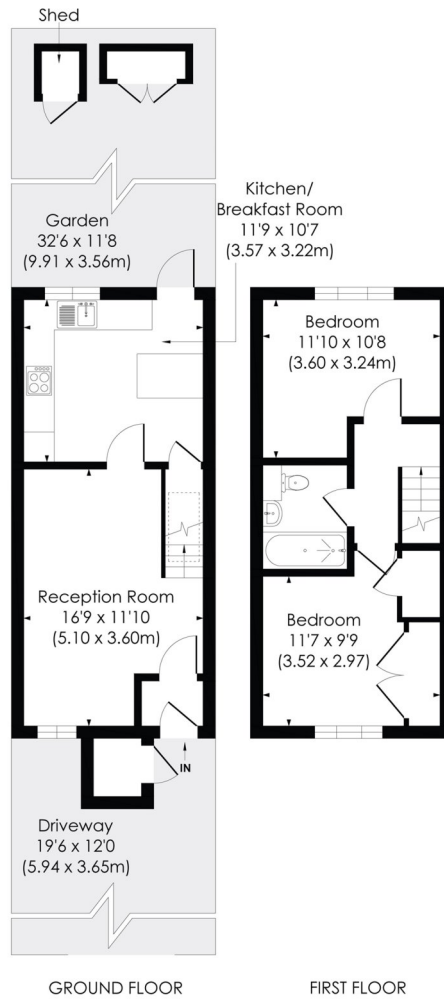
Hopwood Close is situated in a sought after quiet residential street offering easy access to Earlsfield mainline railway station, Tooting Broadway tube station and Wandsworth Common.



HOPWOOD CLOSE, SW17

Approx. Gross Internal Floor Area

668 Sq. ft/62.05 Sq. m



GROUND FLOOR

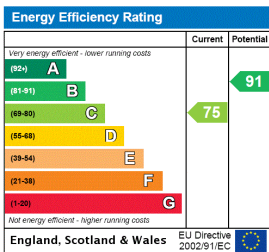
FIRST FLOOR

© Pixangle Property Marketing Ltd. info@pixangle.com Tel: 0208 870 2118



This floor plan has been prepared for the purpose of illustration only in accordance with the latest RICS code of measuring practice and is not to scale. All measurements and areas are approximate and whilst every effort has been made to ensure the accuracy of the plan contained here, no responsibility is taken for any error, omission or misstatement.

This floorplan is for illustration purposes only and is not to scale. The position and size of doors, windows, appliances and other features are approximate.



Tooting | 020 8767 5221 | tooting@winkworth.co.uk
17 Upper Tooting Road, London, SW17 7TS



for every step...

winkworth.co.uk

Winkworth wishes to inform prospective buyers and tenants that these particulars are a guide and act as information only. All our details are given in good faith and believed to be correct at the time of printing but they don't form part of an offer or contract. No Winkworth employee has authority to make or give any representation or warranty in relation to this property. All fixtures and fittings, whether fitted or not are deemed removable by the vendor unless stated otherwise and room sizes are measured between internal wall surfaces, including furnishings.