



PRICES MEWS, LONDON, N1
£800,000 FREEHOLD

A WONDERFUL TWO BEDROOM TWO BATHROOM HOUSE IN THE HEART OF BARNSBURY

Islington | 0207 354 2480 | islington@winkworth.co.uk

Winkworth

winkworth.co.uk

See things differently

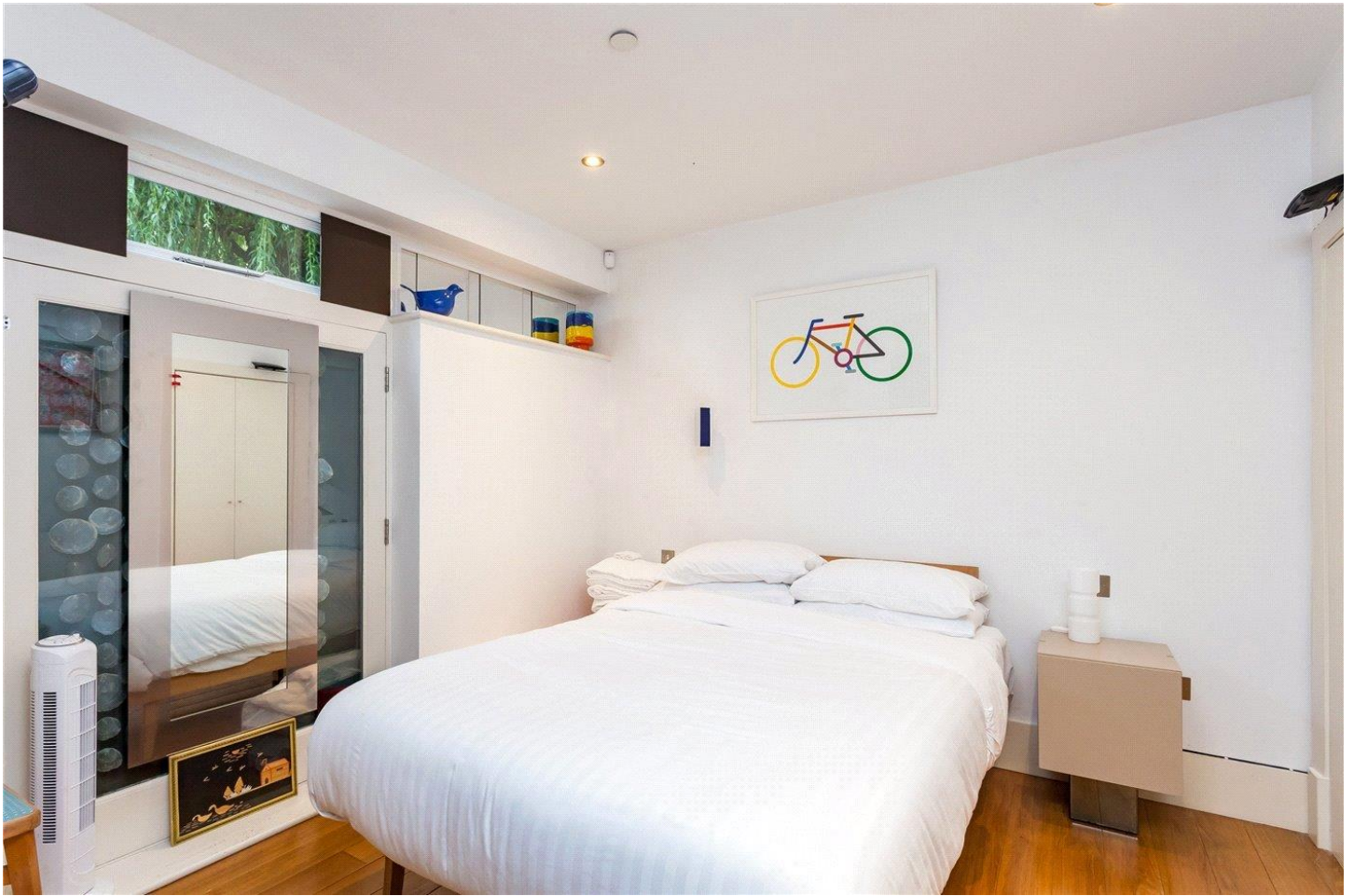


DESCRIPTION:

This fantastic two bedroom, two bathroom freehold house is located in a secluded gated mews just off Matilda Street in Barnsbury. The property is flooded with natural light and boasts well-proportioned rooms throughout. The ground floor accommodation comprises of a master bedroom with en suite bathroom, the second double bedroom including inbuilt storage. The upper level features a fabulously spacious open plan living and entertaining space with well-equipped kitchen, and also a family bathroom. This property further benefits from solid wood floors, double-height ceilings and is offered to the market chain free.

Prices Mews is an exclusive development of meticulously converted and restored former stables. The mews is in an excellent location with great transport links across London and the UK with Kings Cross and Angel underground stations located a short distance away. International travel is also made easy from St. Pancras station and all London airports. It is also a short walk from the many bars, restaurants and boutique shops on Upper Street.

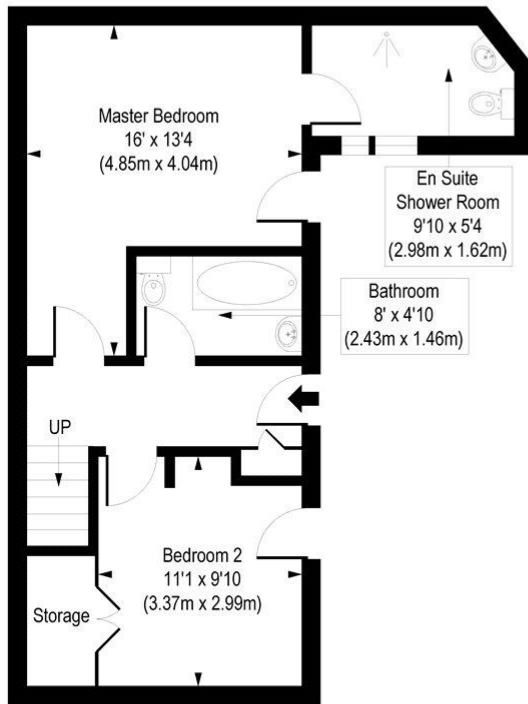
Winkworth



Winkworth

Prices Mews, N1

Approx. Gross Internal Floor Area 899 sq. ft / 83.56 sq. m



Ground Floor
Gross Internal
Floor Area 474 sq ft



First Floor
Gross Internal
Floor Area 425 sq ft

COMPLIANT WITH RICS CODE OF MEASURING PRACTICE. Floorplan is for illustrative purposes only and is not to scale. Every attempt has been made to ensure the accuracy of the floorplan shown, however all measurements, fixtures, fittings and data shown are an approximate interpretation for illustrative purposes only. Liability for errors, omissions or mis-statement through negligence or otherwise is hereby excluded.

This floorplan is for illustration purposes only and is not to scale. The position and size of doors, windows, appliances and other features are approximate.

Islington | 0207 354 2480 | islington@winkworth.co.uk

Winkworth

winkworth.co.uk

See things differently

Winkworth wishes to inform prospective buyers and tenants that these particulars are a guide and act as information only. All our details are given in good faith and believed to be correct at the time of printing but they don't form part of an offer or contract. No Winkworth employee has authority to make or give any representation or warranty in relation to this property. All fixtures and fittings, whether fitted or not are deemed removable by the vendor unless stated otherwise and room sizes are measured between internal wall surfaces, including furnishings.