



CHURCH ROAD, READING, BERKSHIRE, RG7

**Winkworth**



## CHURCH ROAD, READING, BERKSHIRE, RG7

Farley Court is an outstanding conversion of a Grade Two listed Georgian Manor House tucked away in the heart of Farley Hill with breath-taking views over the Berkshire countryside. This magnificent five bedroom town house retains many of its original character features alongside modern conveniences, which combine to offer luxurious living behind an elegant and welcoming façade.

Upon entering the property through the ground floor entrance hall, a flight of stairs leads up to the first floor landing and study area. This level features a spacious living room and a dining room with double doors opening onto a terrace from which views over the grounds and beyond can be enjoyed. The impressive circular drawing room also enjoys fabulous views from the balcony. There is a modern kitchen/breakfast room recently refitted with granite worktops and built-in appliances and a cloakroom.

Additionally, the first floor accommodates the luxurious master bedroom suite, which includes an en suite shower room. The property also boasts a range of character features such as high ceilings and fireplaces, which add to the elegance and charm of the living space.

The second floor provides four further bedrooms, a family room, a well-appointed bathroom, a sensibly located utility room and a study. The house has been professionally decorated to a high standard complementing the style and character of the building.

Apartment 3 benefits from two single garages located in a block, each with power and light, providing ample space for secure parking and storage.

Farley Court is a well-established development set within beautifully landscaped grounds, providing a peaceful country lifestyle yet within easy access of Reading town centre, its mainline railway station and the country's motorway network.

To really appreciate the high-quality finishes, impressive character features and all that this unique and highly desirable town house represents, an internal inspection is highly recommended.





# Farley Court

Approximate Gross Internal Area = 247.1 sq m / 2660 sq ft  
(Excluding Garages)

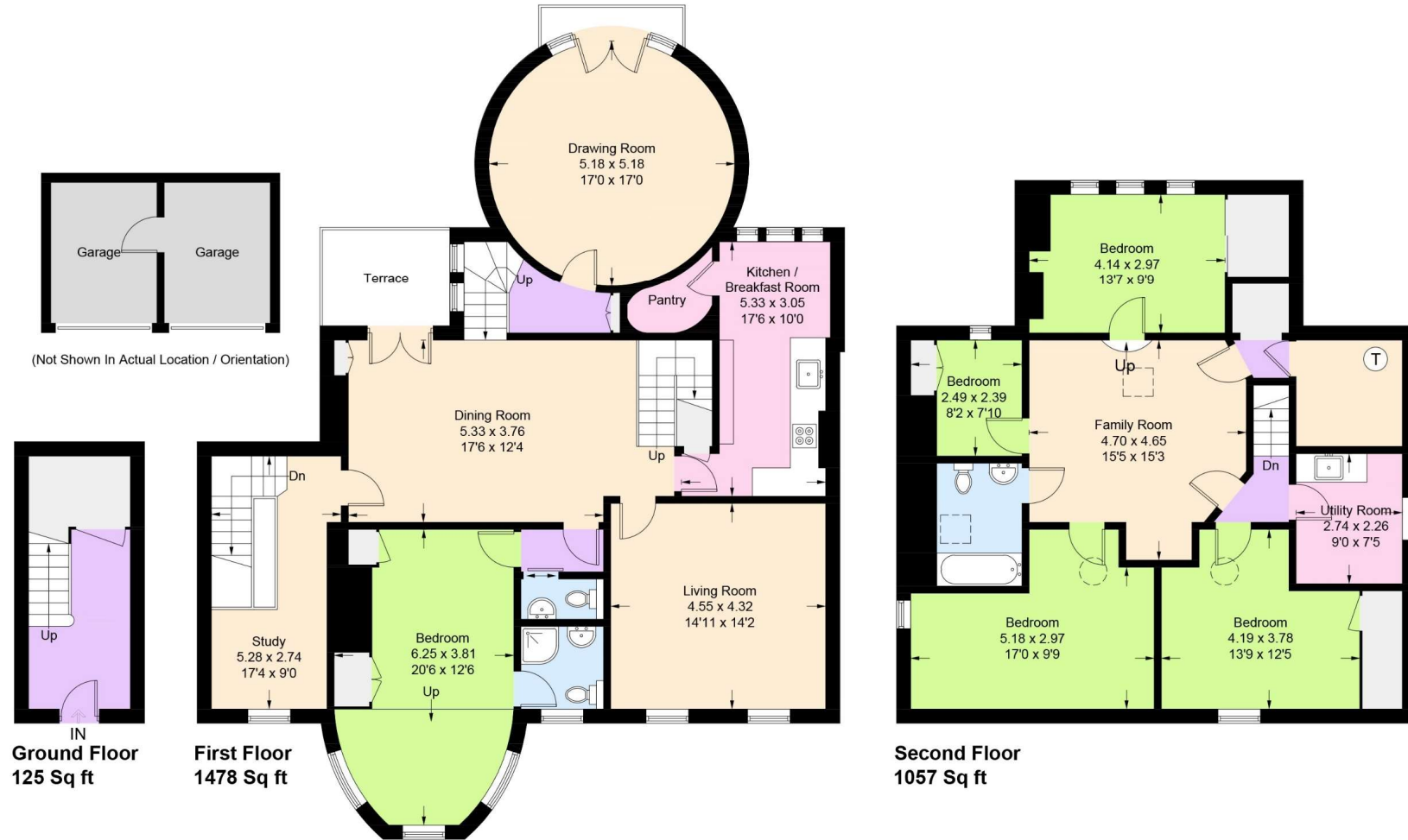


Illustration for identification purposes only,  
measurements are approximate, not to scale. (ID959222)

Wokingham | 01189 072777 | wokingham@winkworth.co.uk

winkworth.co.uk

Winkworth wishes to inform prospective buyers and tenants that these particulars are a guide and act as information only. All our details are given in good faith and believed to be correct at the time of printing but they don't form part of an offer or contract. No Winkworth employee has authority to make or give any representation or warranty in relation to this property. All fixtures and fittings, whether fitted or not are deemed removable by the vendor unless stated otherwise and room sizes are measured between internal wall surfaces, including furnishings.

