



BEECHWOOD AVENUE, N3
£1,500,000 FREEHOLD

**A FULLY EXTENDED MODERNISED FAMILY HOME
SET ON A QUIET RESIDENTIAL N3 TURNING**

Finchley | 020 8349 3388 | finchley@winkworth.co.uk



DESCRIPTION:

Set on a prestigious turning off Regents Park Road, within easy access to local amenities, transport links, Good Ofsted Rated local schools and recreational parkland, such as Stephens House & Gardens, we are pleased to offer this fully renovated and extended family home. The current owners have refurbished every inch of this fabulous home and no expense has been spared! The ground floor comprises of a front reception room, large open plan kitchen/living/dining room with bi-folding doors overlooking a beautiful rear garden, laundry room and downstairs wc. The first floor comprises of three bedrooms, with an en suite to bedroom 2 and family bathroom. The property has also been extended into the loft to create a wonderful primary bedroom with en suite and study room/bedroom. Further benefits include new plumbing, electrics, windows, driveway and garage. To truly appreciate this wonderful family home an internal viewing is highly recommended!

COUNCIL TAX: Band F

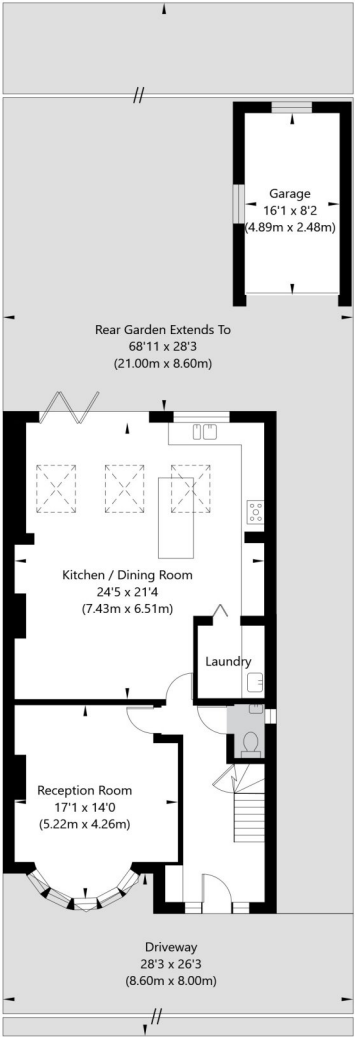
AT A GLANCE

- Set on a prime road
- Fully modernised & extended throughout
- Front reception room
- Open plan living
- Five bedrooms
- Three bathrooms
- Brand new driveway
- Garage

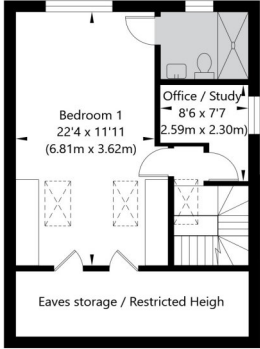




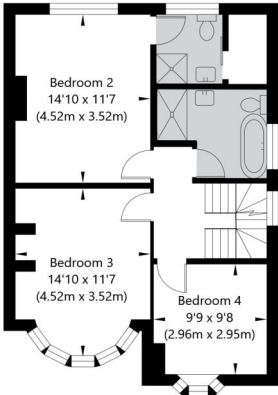
Beechwood Avenue, Finchley N3 3AU



Ground Floor
GROSS INTERNAL FLOOR AREA
APPROX. 81.6 SQ M / 878 SQ FT



Top Floor
GROSS INTERNAL FLOOR AREA
APPROX. 41.3 SQ M / 445 SQ FT



First Floor
GROSS INTERNAL FLOOR AREA
APPROX. 60.11 SQ M / 647 SQ FT

APPROXIMATE GROSS INTERNAL FLOOR AREA INCLUDING OUTBUILDING 195.14 SQ M / 2101 SQ FT
THIS FLOOR PLAN IS FOR ILLUSTRATIVE PURPOSES ONLY AND
SHOULD BE USED FOR THIS PURPOSE BY PROSPECTIVE APPLICANTS AS ITS NOT TO SCALE.

(c) AMBERSHORE PIX LIMITED / PHOTO - VIDEO - FLOOR PLANS / 0800 999 1577 / WWW.AMBERSHOREPIX.CO.UK

