



**HALLEY GARDENS, LEWISHAM, LONDON, SE13**  
**GUIDE PRICE £300,000-£335,000 LEASEHOLD**

A TWO DOUBLE BEDROOM APARTMENT FOUND ON THE FIRST FLOOR IN THIS POPULAR GATED MODERN DEVELOPMENT THAT SITS ON THE GREENWICH MERIDIAN LINE AND IN BETWEEN BLACKHEATH VILLAGE, MANOR HOUSE GARDENS AND LEWISHAM TOWN CENTRE. SOLD CHAIN FREE.

Greenwich | 02030533033 | greenwich@winkworth.co.uk

**Winkworth**

*winkworth.co.uk*

See things differently





Virtually Staged

## DESCRIPTION:

The accommodation comprises; a bright and airy living room with a separate kitchen, two double bedrooms and a modern bathroom. There are communal gardens and an allocated off street parking space.

This is a great apartment and, in our opinion, would be perfect for first time buyers and buy to let investors. There is no chain and the property will benefit from a newly extended lease. Your immediate viewing is essential.

Halley Gardens is convenient for commuters with just 0.55 miles to Blackheath station, 0.64 miles from Lewisham Station & DLR and 0.48 miles from Hither Green Station. Close proximity are locals shops including M&S Food Court M&S food, Sainsbury and Lidl are all within 300 yards. The popular open spaces of Manor House Gardens, (0.2miles), Blackheath Common, (0.6miles), and Greenwich Park, (0.9 miles), are all within a short walk. The Ofsted rated "Outstanding" St Margaret's Primary School is extremely close and the house sits in the catchment area for Thomas Tallis secondary school.

## AT A GLANCE

- modern apartment
- two double bedrooms
- first floor
- extended lease
- chain free
- very close to shops
- close to stations
- gated off street parking

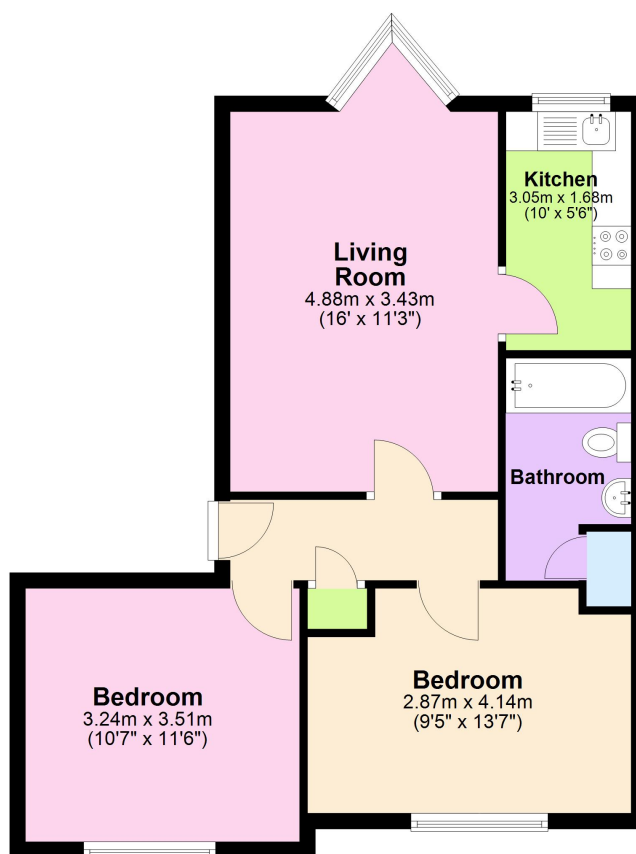






## First Floor

Approx. 55.8 sq. metres (600.8 sq. feet)



Total area: approx. 55.8 sq. metres (600.8 sq. feet)

This floorplan is for illustration purposes only and is not to scale. The position and size of doors, windows, appliances and other features are approximate.

Blackheath | 0208 8520999 | blackheath@winkworth.co.uk

**Winkworth**

*winkworth.co.uk*

See things differently

Winkworth wishes to inform prospective buyers and tenants that these particulars are a guide and act as information only. All our details are given in good faith and believed to be correct at the time of printing but they don't form part of an offer or contract. No Winkworth employee has authority to make or give any representation or warranty in relation to this property. All fixtures and fittings, whether fitted or not are deemed removable by the vendor unless stated otherwise and room sizes are measured between internal wall surfaces, including furnishings.