



MALVERN MEWS, NW6 £800,000 FREEHOLD

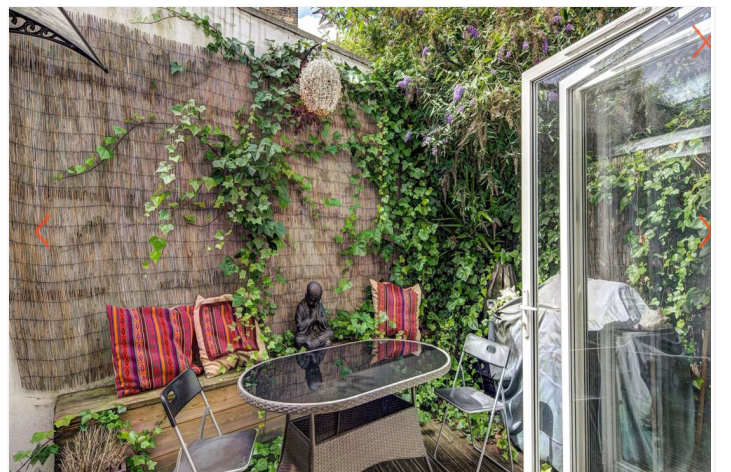
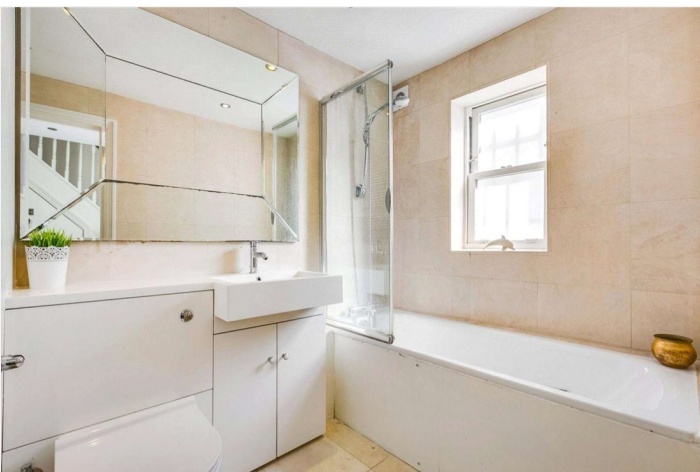
A fantastic opportunity to purchase a bright, well-proportioned, three storey two double bedroom freehold mews house, located in the heart of this fashionable area, forming part of a quiet cobbled mews. The house has been designed to create practical stylish accommodation with a large bedroom suite on the ground floor opening out onto a private patio garden; stairs leading up the first floor with a large open-plan kitchen/reception room and a principal bedroom on the second floor with an en suite shower room and extensive storage. The house has hard wood flooring throughout. Malvern Mews is situated in the heart of this fashionable area close to all the local amenities including local shops, cafes, Paddington Recreation Ground (0.4 miles) and the Underground Stations at Maida Vale (Bakerloo line - 0.7 miles) and Westbourne Park (Circle and Hammersmith & City lines - 0.7 miles).

Principal Bedroom With En Suite Shower Room | Second Double Bedroom | Bathroom | Open Plan Kitchen/Dining/Reception Room | Private Patio | Parking Available | Freehold

Winkworth

for every step...

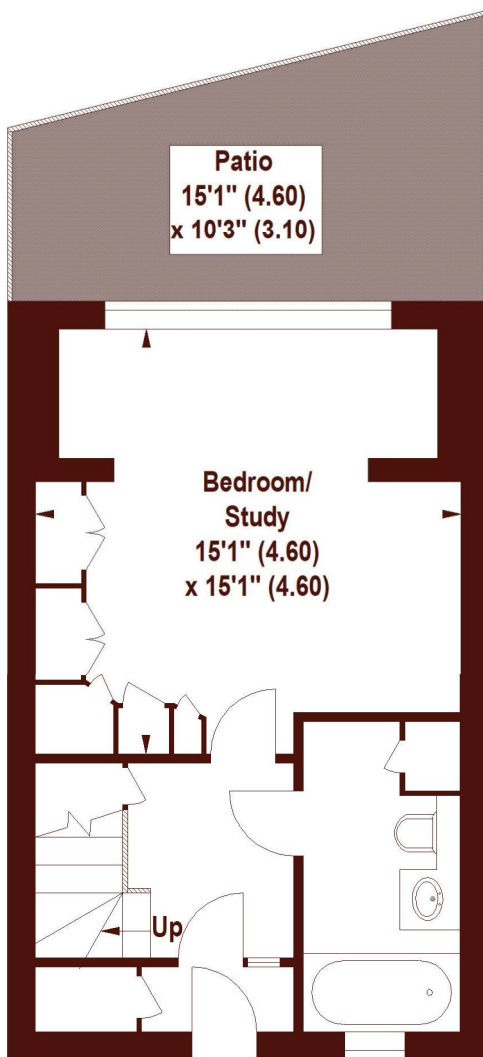
winkworth.co.uk/maida-vale



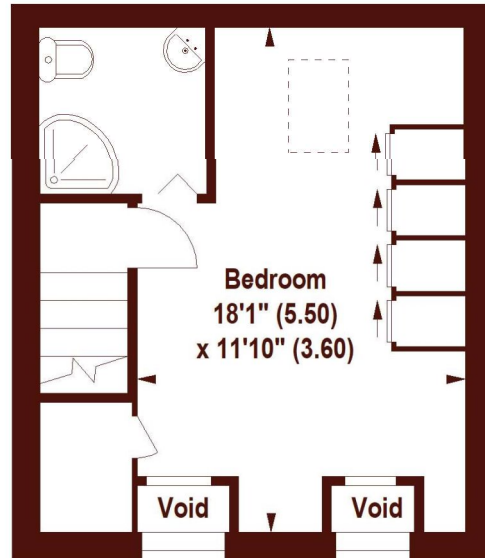
Mildrose Court, Malvern Mews, NW6

APPROX. GROSS INTERNAL FLOOR AREA 974 SQFT / 90.48 SQM

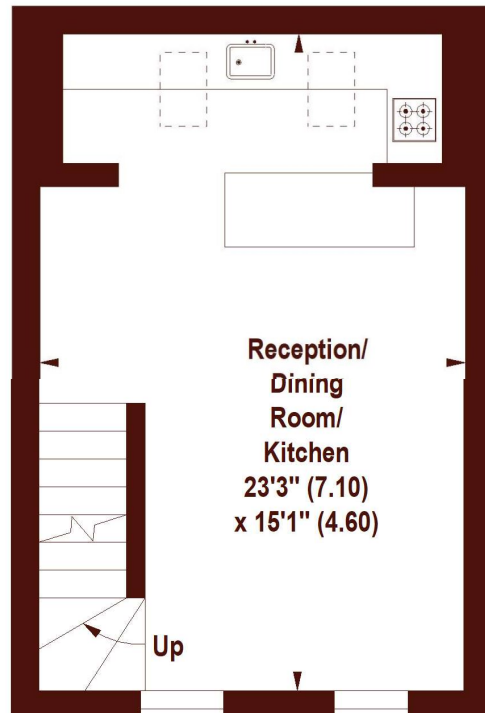
Key :
CH - Ceiling Height



GROUND FLOOR

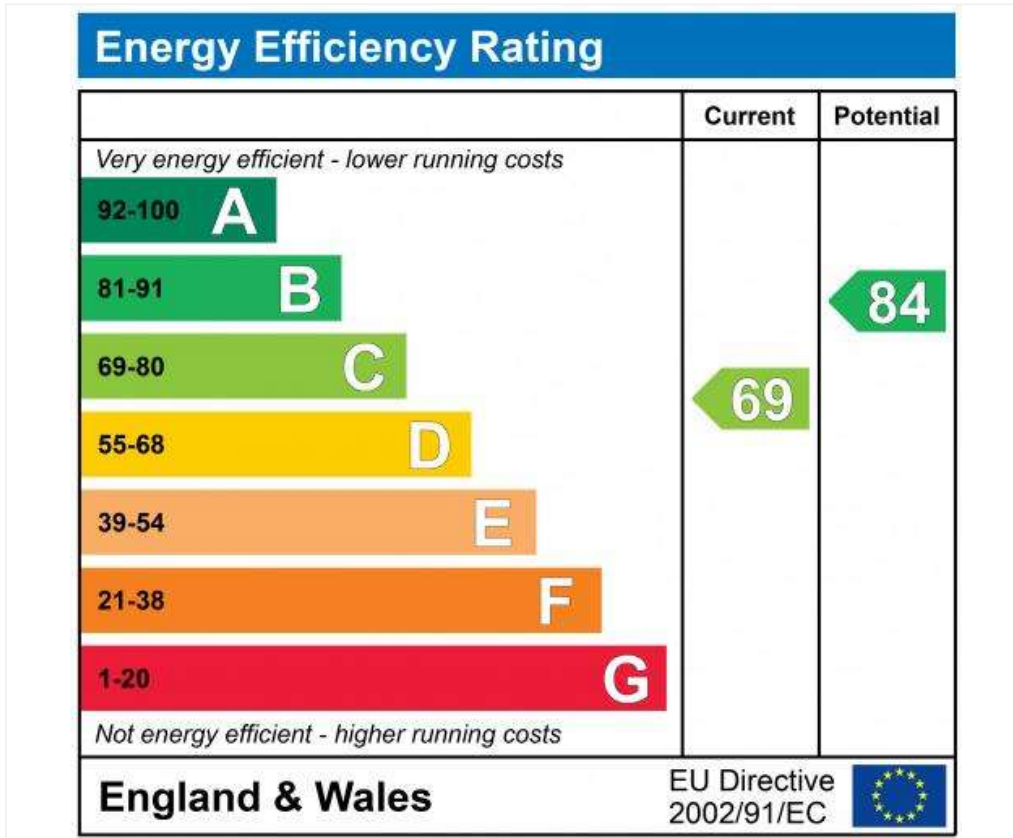


SECOND FLOOR



FIRST FLOOR

Not to scale, for guidance only and must not be relied upon as a statement of fact.
All measurements and areas are approximate only



Tenure: Freehold
Term: Freehold
Service Charge: £300 per annum
Ground Rent: N/A
Council Tax Band: C

Where no figures are shown, we have been unable to ascertain the information. All figures that are shown were correct at the time of printing.

Where no figures are shown, we have been unable to ascertain the information. All figures that are shown were correct at the time of printing. These particulars are not an offer or contract, nor part of one. You should not rely on statements by Winkworth in the particulars or by word of mouth or in writing "information" as being factually accurate about the property, its condition or its value. Winkworth does not have any authority to make any representations about the property, and accordingly any information given is entirely without responsibility on the part of the agents, seller(s) or lessor(s). These particulars are prepared on the basis of the information supplied by our client and are a rough guide for information only. The photographs show only certain parts of the property. We are not able to check all of the information and therefore are unable to guarantee accuracy. All interested parties are therefore advised to undertake all necessary inspections and checks that they deem appropriate. Where displayed, the square footage is taken from the floor plans, which are created by an independent supplier. These measurements are approximate and included for illustrative purposes only. The measurements may vary. Winkworth does not make any representation as to the accuracy of these measurements and you should seek to verify them for yourself. Winkworth accept no liability for any loss you may suffer if you rely on these measurements. All fixtures and fittings, whether fitted or not are deemed removable by the vendor unless stated. Any reference to alterations to, or use of, any part of the property does not mean that any necessary planning, building regulations or other consent has been obtained. Amenities and appliances have not been tested

Maida Vale | 211-213 Sutherland Avenue, London, W9 1RU | 020 7289 1692



for every step...

winkworth.co.uk/maida-vale

Winkworth wishes to inform prospective buyers and tenants that these particulars are a guide and act as information only. All our details are given in good faith and believed to be correct at the time of printing but they don't form part of an offer or contract. No Winkworth employee has authority to make or give any representation or warranty in relation to this property. All fixtures and fittings, whether fitted or not are deemed removable by the vendor unless stated otherwise and room sizes are measured between internal wall surfaces, including furnishings.