

HAZLEMERE GARDENS, WORCESTER PARK, KT4

£750,000 FREEHOLD

**AN APPEALING FAMILY HOME OFFERING SCOPE FOR
EXTENSION STPP SITUATED CLOSE TO WORCESTER PARK
TRAIN STATION AND SEVERAL WELL-REGARDED SCHOOLS**

Winkworth

Worcester Park Office | 020 8335 5555 | worcesterpark@winkworth.co.uk

winkworth.co.uk

See things differently



AT A GLANCE

- No Onward Chain
- 3 Double Bedrooms
- Superb Curb Appeal
- Living Room
- Dining Room
- Kitchen/Breakfast Room
- Family Bathroom
- Downstairs Shower Room
- Store/Garage
- Front Garden
- Rear Garden 65ft Approx
- Scope To Extend STPP

DESCRIPTION

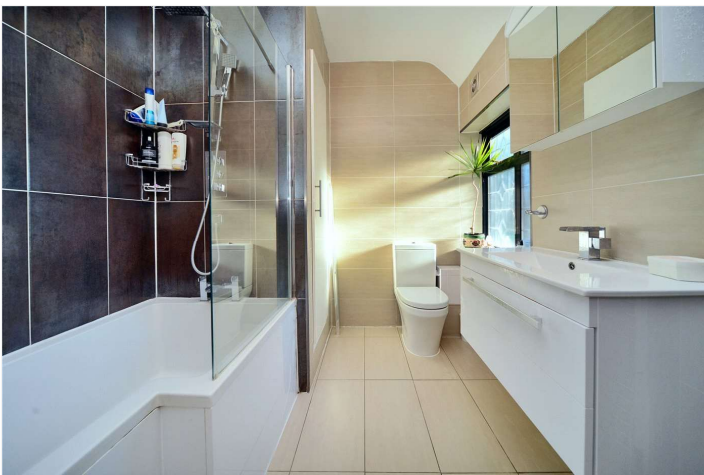
Situated in a quiet cul-de-sac, close to Worcester Park Zone 4 train station, this wonderful semi-detached family home benefits from superb curb appeal, well-proportioned room sizes throughout and two bathrooms.

The accommodation on the ground floor comprises a spacious entrance hall, a front aspect living room with large bay window and feature fireplace, a second reception room, a kitchen breakfast room and downstairs shower room/WC. Upstairs, there are three double bedrooms and a family bathroom. The property offers significant scope for extension subject to the usual planning consents, and the current owner previously had planning permission granted. Other features include underfloor heating and a 30-year guarantee for the kitchen from date of fitting.

Externally, the property benefits from a sizeable front lawn with retaining wall and off-street parking to either side of the property, whilst to the rear you will find a well-kept 65ft circa garden which offers lots of privacy, and access to the detached garage.

Locally, the high street provides an array of amenities including shops, restaurants, cafes and a variety of bus routes towards Kingston, Sutton, Epsom and Heathrow. Worcester Park train station provides fast and frequent services to Central London. Families will benefit from several well-regarded schools including Green Lane Primary School, Dorchester Primary School and Cheam Common Infant's and Junior Academies.

Vendor suited. No Onward Chain.



ACCOMMODATION

Entrance Hall

Living Room - 15'6" x 12'1" max (4.72m x 3.68m max)

Dining Room/Bedroom - 13'5" x 12'5" max (4.1m x 3.78m max)

Kitchen - 13'6" x 11'3" max (4.11m x 3.43m max)

Downstairs Shower/WC

First Floor Landing

Bedroom - 13'10" x 12'6" max (4.22m x 3.8m max)

Bedroom - 14' x 12'1" max (4.27m x 3.68m max)

Bedroom - 11'5" x 7'6" max (3.48m x 2.29m max)

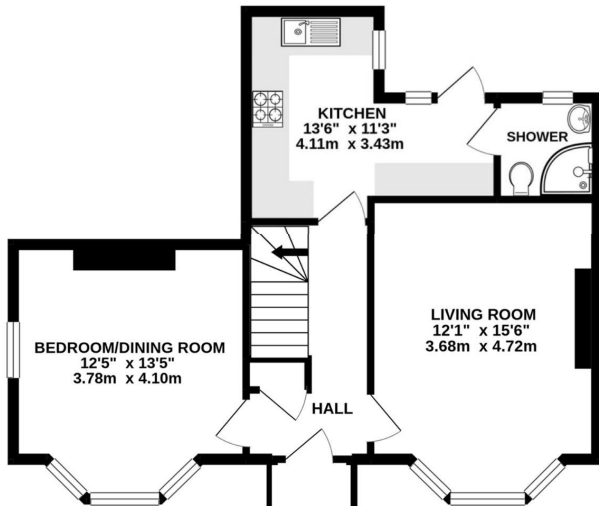
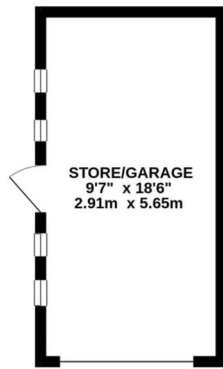
Bathroom - 8'11" x 7'1" max (2.72m x 2.16m max)

Store/Garage - 18'6" x 9'7" (5.64m x 2.92m)

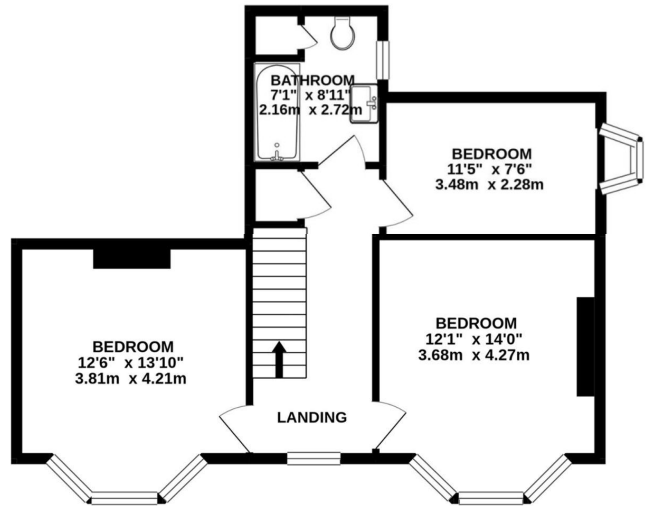
Hazlemere Gardens, Worcester Park KT4 8AH

INTERNAL FLOOR AREA
(APPROX.) 1293 sq ft/ 120.0 sq m

Garden extends to 65' (19.81m) approximately



GROUND FLOOR



FIRST FLOOR

Winkworth

Whilst every attempt has been made to ensure the accuracy of this floor plan, measurement of doors, windows, rooms and any other items are approximate and no responsibility is taken for any error, omission or mis-statement. Made with Metropix © 2021.

This floorplan is for illustration purposes only and is not to scale. The position and size of doors, windows, appliances and other features are approximate.

Energy Efficiency Rating		
	Current	Potential
Very energy efficient - lower running costs		
(92+) A		
(81-91) B		
(69-80) C		77
(55-68) D	56	
(39-54) E		
(21-38) F		
(1-20) G		
Not energy efficient - higher running costs		
England, Scotland & Wales	EU Directive 2002/91/EC	

Winkworth

winkworth.co.uk

See things differently

Winkworth wishes to inform prospective buyers and tenants that these particulars are a guide and act as information only. All our details are given in good faith and believed to be correct at the time of printing but they don't form part of an offer or contract. No Winkworth employee has authority to make or give any representation or warranty in relation to this property. All fixtures and fittings, whether fitted or not are deemed removable by the vendor unless stated otherwise and room sizes are measured between internal wall surfaces, including furnishings.