



Oslo Court, St John's Wood, London, NW8

£640,000 *Leasehold*



A recently renovated, one bedroom apartment with modern features throughout. The property benefits from bespoke fitted cupboards (all soft closing) and storage with LED lighting as well as a private balcony (with lighting) a semi open-plan, fully-fitted bespoke kitchen with under cabinet LED strip lighting. Further benefits include a 'wood-effect' ceramic tiled floor, which is easy to maintain and clean and a new bathroom with rainfall head shower and LED spotlights. This charming art-deco 1930's development is less than half a mile away from both St John's Wood High Street and Underground Station (Jubilee Line) and directly opposite the wonderful, leafy Regent's Park. Further benefits include a 24hr portage, communal hot water and heating system and a passenger lift.



Winkworth St John's Wood

020 7586 7001 | stjohnswood@winkworth.co.uk



KEY FEATURES

- Principal Bedroom
- Bathroom
- Open Plan Kitchen/Reception Room
- Private Balcony
- 24hr Portage
- Passenger Lift
- Communal Heating and Hot Water
- Leasehold



MATERIAL INFO

Tenure: Leasehold

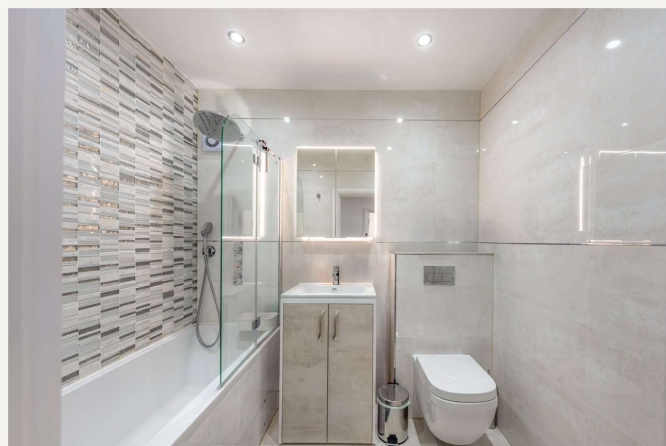
Lease Expiry Date: 25/12/2163

Service Charge: £5,479.9 per annum

Ground Rent: £0 Annually (subject to increase)

Council Tax Band: E

EPC rating: C





Score	Energy rating	Current	Potential
92+	A		
81-91	B		
69-80	C	77 C	82 B
55-68	D		
39-54	E		
21-38	F		
1-20	G		

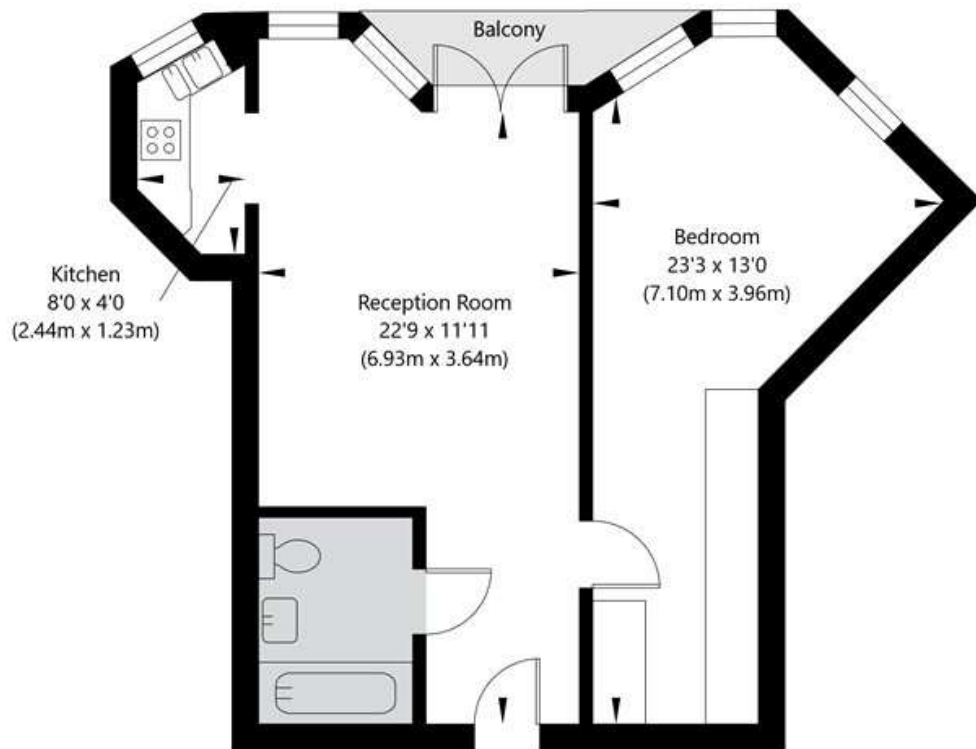
For more information, scan the QR code or visit the link below



<https://www.winkworth.co.uk/sale/property/SJD250282>

Oslo Court, Prince Albert Road, London NW8 7EN

Second Floor
GROSS INTERNAL FLOOR AREA
APPROX. 48.81 SQ M / 525 SQ FT



APPROXIMATE GROSS INTERNAL FLOOR AREA 48.81 SQ M / 525 SQ FT
THIS FLOOR PLAN IS FOR ILLUSTRATIVE PURPOSES ONLY AND
SHOULD BE USED FOR THIS PURPOSE BY PROSPECTIVE APPLICANTS AS ITS NOT TO SCALE.

(c) AMBERSHORE PIX LIMITED / PHOTO - VIDEO - FLOOR PLANS / 0800 999 1577 / WWW.AMBERSHOREPIX.CO.UK

Where no figures are shown, we have been unable to ascertain the information. All figures that are shown were correct at the time of printing.

Winkworth St John's Wood

020 7586 7001 | stjohnswood@winkworth.co.uk

Winkworth wishes to inform prospective buyers and tenants that these particulars are a guide and act as information only. All our details are given in good faith and believed to be correct at the time of printing but they don't form part of an offer or contract. No Winkworth employee has authority to make or give any representation or warranty in relation to this property. All fixtures and fittings, whether fitted or not are deemed removable by the vendor unless stated otherwise and room sizes are measured between internal wall surfaces, including furnishings.