



LONGLEY ROAD, SW17  
£350,000 SHARE OF FREEHOLD

## A BRIGHT ONE BEDROOM LOFT CONVERSION FLAT

Tooting | 020 8767 5221 | [tooting@winkworth.co.uk](mailto:tooting@winkworth.co.uk)

**Winkworth**

for every step...

[winkworth.co.uk](http://winkworth.co.uk)





## DESCRIPTION:

Nestled on Longley Road in the heart of Tooting Broadway, is this meticulously maintained one-bedroom top-floor loft conversion.

Boasting a luminous reception room, a generously sized double bedroom complete with built-in wardrobes, a sunlit kitchen featuring a breakfast bar, a pristine bathroom and coveted access to a communal garden.

This property offers a share of freehold and harmonious blend of comfort and convenience.

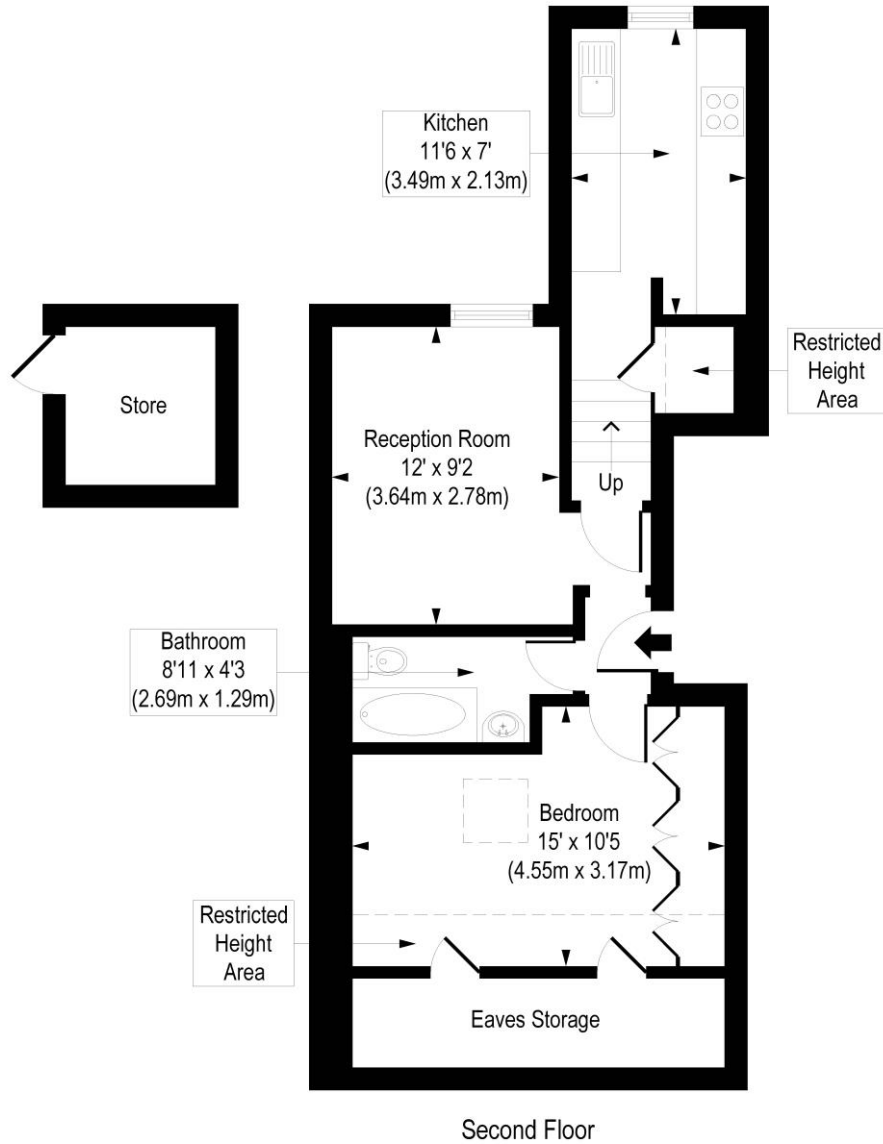
With its prime location, residents enjoy effortless access to the Northern Line Tube link at Tooting Broadway, Tooting Overground Thames Link, and a plethora of local shopping facilities, ensuring a lifestyle of ease and accessibility.





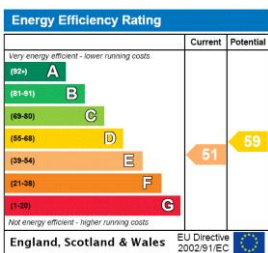
# Longley Road, SW17

Approx. Gross Internal Floor Area 544 sq. ft / 50.54 sq. m  
(Including Restricted Height Area, Eaves Storage & Store)



COMPLIANT WITH RICS CODE OF MEASURING PRACTICE. Floorplan is for illustrative purposes only and is not to scale. Every attempt has been made to ensure the accuracy of the floorplan shown, however all measurements, fixtures, fittings and data shown are an approximate interpretation for illustrative purposes only. Liability for errors, omissions or mis-statement through negligence or otherwise is hereby excluded.

This floorplan is for illustration purposes only and is not to scale. The position and size of doors, windows, appliances and other features are approximate.



Tooting | 020 8767 5221 | tooting@winkworth.co.uk

for every step...

winkworth.co.uk

Winkworth wishes to inform prospective buyers and tenants that these particulars are a guide and act as information only. All our details are given in good faith and believed to be correct at the time of printing but they don't form part of an offer or contract. No Winkworth employee has authority to make or give any representation or warranty in relation to this property. All fixtures and fittings, whether fitted or not are deemed removable by the vendor unless stated otherwise and room sizes are measured between internal wall surfaces, including furnishings.