



Ambleside Road, NW10

£715,000 *Freehold*

3  2  1 

Three bedroom, mid-terrace Victorian family home, benefitting from for a new owner to add their own stamp to and potential to extend (STPP).

KEY FEATURES

- FREEHOLD
- NO UPPER-CHAIN
- POTENTIAL TO EXTEND (STPP)
- CLOSE TO LOCAL SCHOOLS
- SHORT WALK TO ROUNDWOOD PARK
- WALKING DISTANCE TO TUBE & OVERGROUND



Kensal Rise & Queens Park

0208 960 4947 | kensalrise@winkworth.co.uk

Winkworth

for every step...

Winkworth wishes to inform prospective buyers and tenants that these particulars are a guide and act as information only. All our details are given in good faith and believed to be correct at the time of printing but they don't form part of an offer or contract. No Winkworth employee has authority to make or give any representation or warranty in relation to this property. All fixtures and fittings, whether fitted or not are deemed removable by the vendor unless stated otherwise and room sizes are measured between internal wall surfaces, including furnishings.



DESCRIPTION

This well presented three bedroom home, offers a great opportunity. With the ability to extend on the ground floor and in to the loft space, there is scope to transform the space by adding significant square-footage STPP.

The property currently comprises of two separate facing reception rooms with additional dining room. There is a ground floor shower room, and utility room to the rear, which will typically be the kitchen. There is direct access on to the garden via the kitchen and dining room, as well as off the hallway.

On the first floor, you will find three double bedrooms, kitchen and W/C.

The property is offered to the market with no-upper chain.





LOCATION

Ambleside Road is an attractive and popular street, benefitting from being near to the open green spaces of Roundwood Park. Willesden Junction, Dollis Hill and Willesden Green Tube and Overground Stations also offer excellent transport links in and out of town via the Bakerloo, Jubilee and London Overground services. There are an array of amenities and a number of schools within easy access making this a popular location for families.

For more information, scan the QR code or visit the link below



<https://www.winkworth.co.uk/sale/property/KQP250143>

Where no figures are shown, we have been unable to ascertain the information. All figures that are shown were correct at the time of printing.

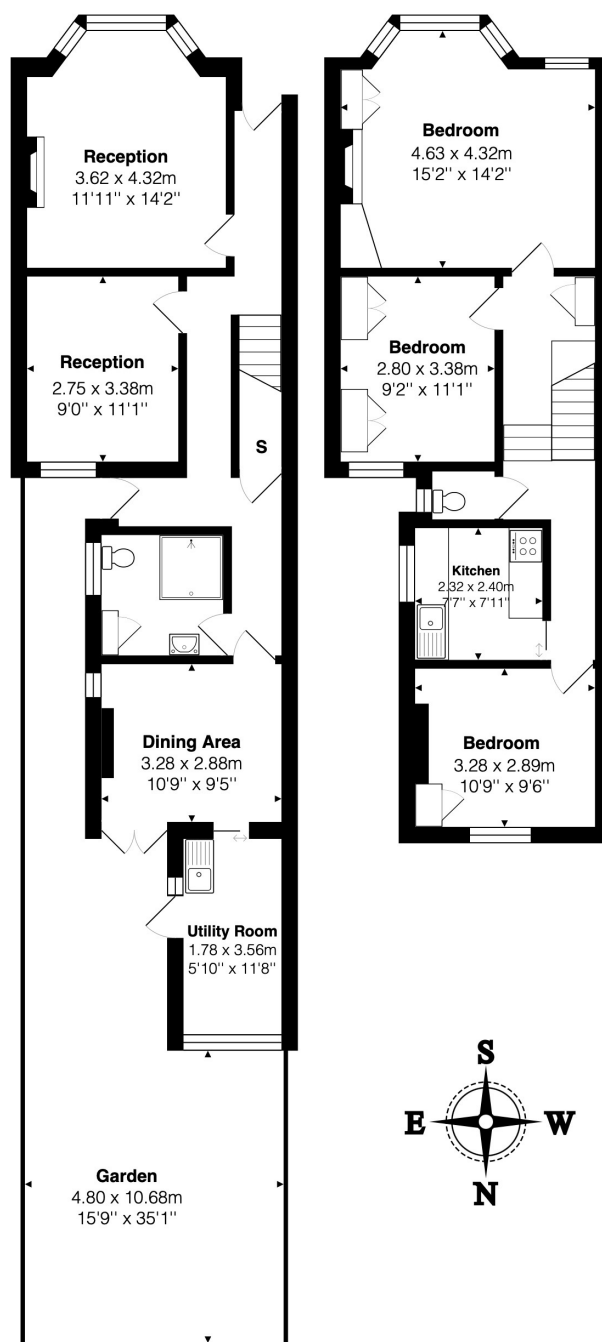
MATERIAL INFO

Tenure: Freehold

Council Tax Band: D

EPC rating: D

Score	Energy rating	Current	Potential
92+	A		
81-91	B		84 B
69-80	C		
55-68	D	63 D	
39-54	E		
21-38	F		
1-20	G		



Total Area: 117.7 m² ... 1267 ft² (excluding garden)

All measurements are approximate and for display purposes only

Kensal Rise & Queens Park

0208 960 4947 | kensalrise@winkworth.co.uk

Winkworth

for every step...

Winkworth wishes to inform prospective buyers and tenants that these particulars are a guide and act as information only. All our details are given in good faith and believed to be correct at the time of printing but they don't form part of an offer or contract. No Winkworth employee has authority to make or give any representation or warranty in relation to this property. All fixtures and fittings, whether fitted or not are deemed removable by the vendor unless stated otherwise and room sizes are measured between internal wall surfaces, including furnishings.