



NETHER STREET, LONDON, N3  
**£440,000 LEASEHOLD**

## A SPACIOUS AND MODERNISED TWO BEDROOM FLAT SET IN A PRIME N3 LOCATION

Finchley | 020 8349 3388 | [finchley@winkworth.co.uk](mailto:finchley@winkworth.co.uk)

**Winkworth**

for every step...

[winkworth.co.uk](http://winkworth.co.uk)





## DESCRIPTION:

A well presented, two double bedroom, upper floor, purpose built flat, set in a popular development on Nether Street, situated within two minutes walking distance to Finchley Central tube station and shopping amenities. This bright and spacious property offers two double bedrooms with fitted wardrobes, a modern fully fitted kitchen, tiled family bathroom, large reception room with access to a private balcony, residents' parking, 24 hour portage and double glazed windows throughout. Offered chain free and with a share of the freehold and garage.

## AT A GLANCE

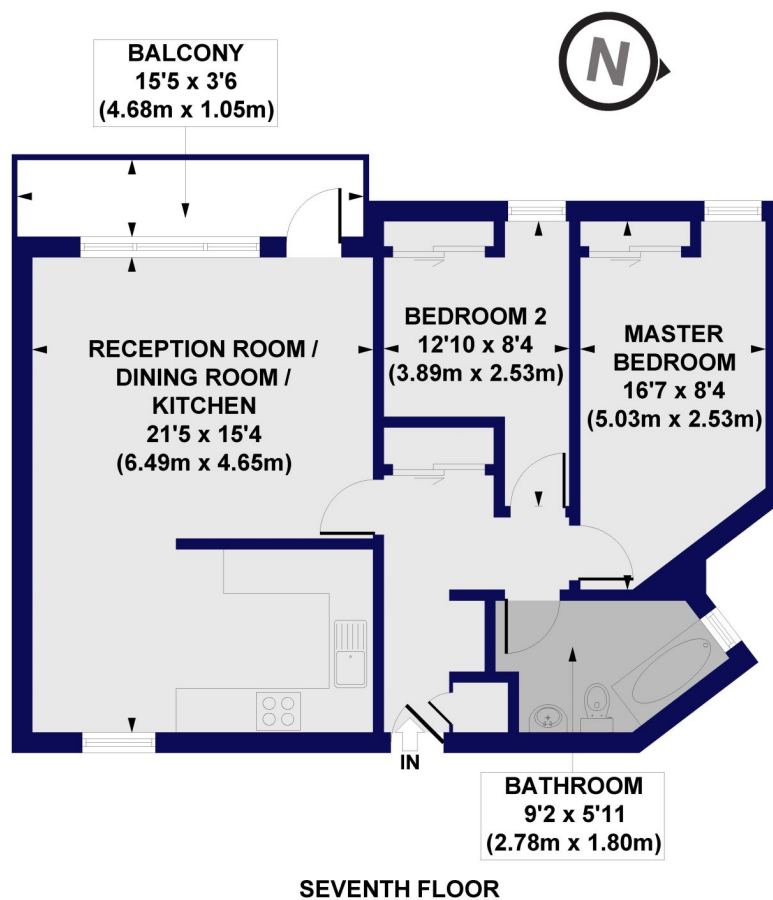
- Purpose built
- Lift in block
- Two bedrooms
- Reception Room
- Eat-in Kitchen
- Parking & Garage
- Balcony
- Share of freehold







**Norman Court, Nether Street, N3**  
**Approx. Gross Internal Floor Area 691 sq. ft / 64.20 sq. m**



All measurements of walls, doors, windows, fittings and appliances, including their size and location, are shown as standard sizes and do not constitute any warranty or representation by the seller, their agent or CP Creative. Any intending purchaser must satisfy himself by inspection or otherwise as to the correctness of the information contained in these plans. This plan is for illustrative purposes only and should be used as such by any prospective purchasers.

**Winkworth**

This floorplan is for illustration purposes only and is not to scale. The position and size of doors, windows, appliances and other features are approximate.

**Tenure:** Leasehold

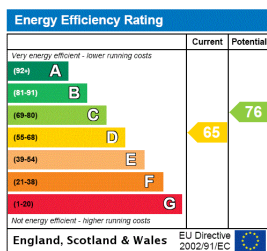
**Term:** 956 year lease

**Service Charge:** £2957 per annum

**Ground Rent:** £ peppercorn

**Council Tax Band:** D

Where no figures are shown, we have been unable to ascertain the information. All figures that are shown were correct at the time of printing.



Finchley | 020 8349 3388 | finchley@winkworth.co.uk

**Winkworth**

**for every step...**

*winkworth.co.uk*

Winkworth wishes to inform prospective buyers and tenants that these particulars are a guide and act as information only. All our details are given in good faith and believed to be correct at the time of printing but they don't form part of an offer or contract. No Winkworth employee has authority to make or give any representation or warranty in relation to this property. All fixtures and fittings, whether fitted or not are deemed removable by the vendor unless stated otherwise and room sizes are measured between internal wall surfaces, including furnishings.