



CAMBRIDGE GARDENS, LONDON, W10
£2,145 PER MONTH FURNISHED

**STUNNING MODERNISED ONE BEDROOM APARTMENT IN
THE HEART OF LADBORKE GROVE NOTTING HILL**

North Kensington | 020 7792 5000 | northkensington@winkworth.co.uk

Winkworth

for every step...

winkworth.co.uk



DESCRIPTION:

Stunning modernised one bedroom apartment is set within a gorgeous double fronted Victorian villa, which is ideally located on one of Ladbrooke Grove's premier residential roads.

This property has been tastefully decorated to a high specification and is beautifully presented throughout. Comprises a bright, modern open plan kitchen/dining and living room, spacious double bedroom and modern shower room. The property has been bespoke designed to maximize storage and space and is well proportioned throughout.

North Kensington's multicultural hotspot, Ladbrooke Grove is a prime example of a modern urban living offering plenty of unique restaurants, coffee shops and antique furniture stores. Renowned Portobello market, Golborne Road and transport links at Ladbrooke Grove are a stone throw away.



Winkworth

for every step...

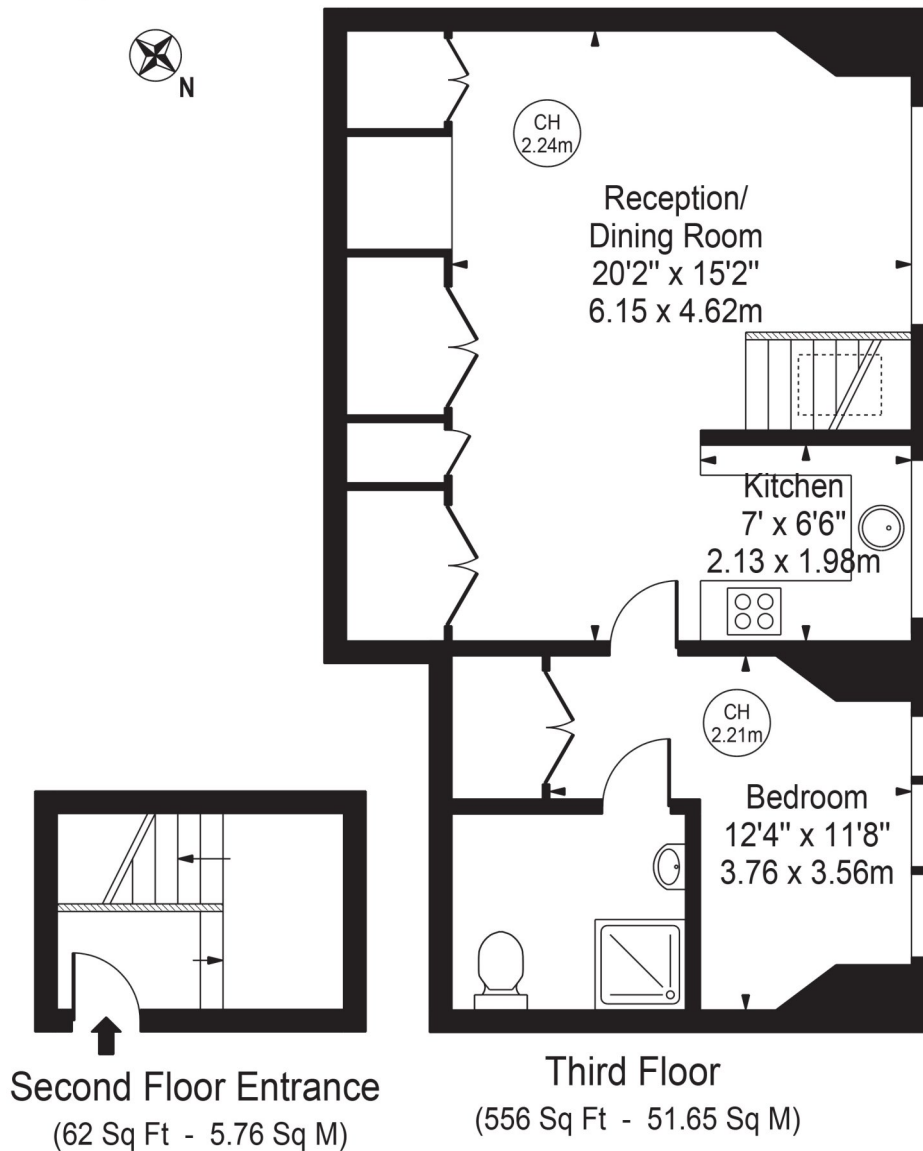


Winkworth

for every step...

Cambridge Gardens

Approx. Gross Internal Area 618 Sq Ft - 57.41 Sq M



For Illustration Purposes Only - Not To Scale

This floor plan should be used as a general outline for guidance only and does not constitute in whole or in part an offer or contract. Any intending purchaser or lessee should satisfy themselves by inspection, searches, enquiries and full survey as to the correctness of each statement. Any areas, measurements or distances quoted are approximate and should not be used to value a property or be the basis of any sale or let.

Copyright Morriarti Photography & Design LTD

This floorplan is for illustration purposes only and is not to scale. The position and size of doors, windows, appliances and other features are approximate.

North Kensington | 020 7792 5000 | northkensington@winkworth.co.uk

Winkworth

for every step...

winkworth.co.uk

Winkworth wishes to inform prospective buyers and tenants that these particulars are a guide and act as information only. All our details are given in good faith and believed to be correct at the time of printing but they don't form part of an offer or contract. No Winkworth employee has authority to make or give any representation or warranty in relation to this property. All fixtures and fittings, whether fitted or not are deemed removable by the vendor unless stated otherwise and room sizes are measured between internal wall surfaces, including furnishings.