



## Flat 6 Ocean View

Boscombe Beach

BH5 1BL - PRICE £375,000

Winkworth









Share Of Freehold - £375,000

01202 434365 | southbourne@winkworth.co.uk

## A bright and spacious sea front apartment, with two double bedrooms and expansive lounge/dining room with sweeping sea views

Winkworth Southbourne are delighted to offer for sale this beautiful two double bedroom first floor apartment situated in an iconic row of beach front properties just steps from Boscombe beach and it's vast array of facilities. The apartment features high ceilings and the expansive lounge/dining room benefits from a large bay window with stunning views of the bay. Both bedrooms are double in size and the master has an ensuite shower room.

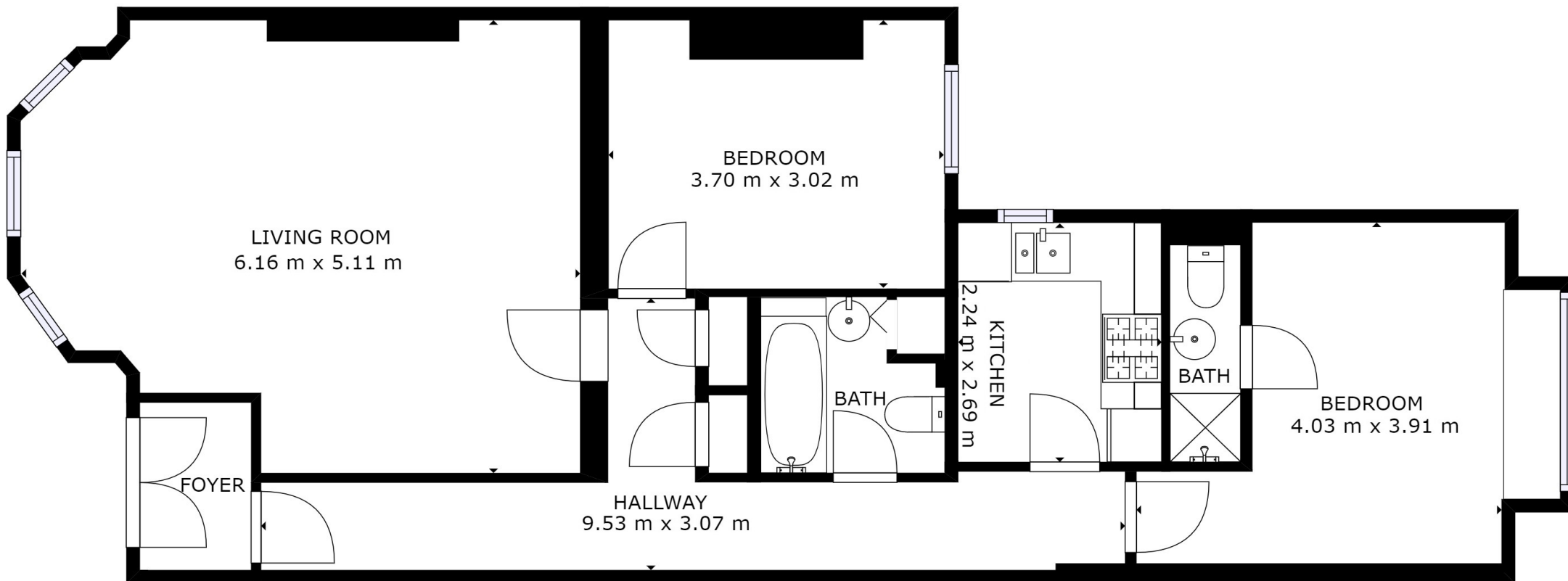
- Spacious lounge / diner
- Sea Views
- Private Entrance
- Full Bathroom & Ensuite
- High Ceilings
- Ample storage

### Location

Boscombe is the suburb of Bournemouth and is located to the south east and neighbours both Bournemouth and Southbourne. Boscombe High Street offers a varied shopping experience with a number of well known high street stores. The area benefits from a number of local attractions including the award-winning blue flag sandy beaches with a level walk promenade extending from Hengistbury Head through to Sandbanks.

A local bus service provides links to Bournemouth and Poole with a different shopping experience together with a number of restaurants and bars providing a vibrant nightlife. A local train station provides direct links to Southampton, Southampton Airport and London which is approximately 100 miles away.

Bournemouth International airport (6 miles) offers a varied schedule of flights to a number of European destinations.



FLOOR 1

Flat 6 Ocean View  
1-3, Undercliff Road  
BOURNEMOUTH  
BH5 1BL

Energy rating

C

Valid until  
20 June 2028

Certificate number  
8508-6226-5830-6399-9922

GROSS INTERNAL AREA

FLOOR 1: 95 m<sup>2</sup>

TOTAL: 95 m<sup>2</sup>

SIZES AND DIMENSIONS ARE APPROXIMATE, ACTUAL MAY VARY.

Winkworth Southbourne

29 Southbourne Grove, BH6 3QT  
01202 434365 | southbourne@winkworth.co.uk

[winkworth.co.uk/southbourne](http://winkworth.co.uk/southbourne)

Winkworth