



MALDEN ROAD, HERTFORDSHIRE, WD6

£450,000 FREEHOLD

CHAIN FREE FOUR BEDROOM, TWO RECEPTION VICTORIAN COTTAGE

Borehamwood | 020 8953 8899 | borehamwood@winkworth.co.uk



Winkworth

DESCRIPTION:

Ideally located in a quiet and sought after turning within easy walking distance of Borehamwood town centre and Thameslink station is this Four-bedroom Victorian Character house.

Offered for sale on a chain free basis the property needs some modernisation. Offering over 1,000 sq. ft of accommodation consisting of Living room, dining room, kitchen and bathroom to the ground floor with access via the kitchen to a private garden. You will find 3 bedrooms to the first floor with a further bedroom and ensuite to the second floor.

Viewing comes highly recommended.

AT A GLANCE

- 4 Bedrooms
- Entrance Hall
- Reception Room
- Kitchen
- Ensuite Bathroom
- Bathroom
- Garden
- Dining Room



Winkworth



Winkworth



Approximate Gross Internal Area = 98.7 sq m / 1062 sq ft

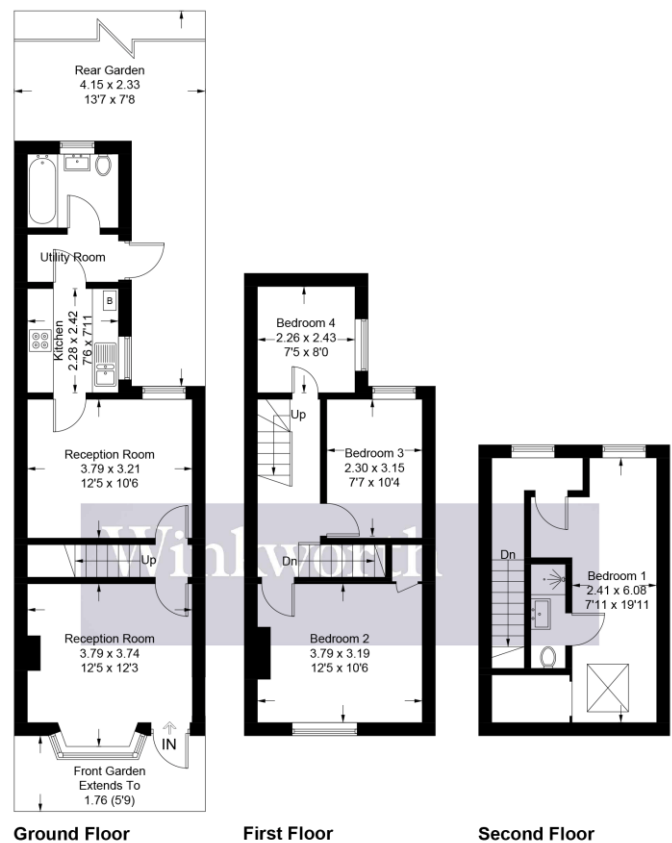


Illustration for identification purposes only, measurements are approximate, not to scale. Winkworth © 2025 (ID1192076)

This floorplan is for illustration purposes only and is not to scale. The position and size of doors, windows, appliances and other features are approximate.

Score	Energy rating	Current	Potential
92+	A		
81-91	B		83 B
69-80	C		
55-68	D	56 D	
39-54	E		
21-38	F		
1-20	G		

Tenure: Freehold

Term: 0 year and 0 months

Service Charge: £0 per annum

Ground Rent: £ 0 Annually (subject to increase)

Council Tax Band: D

Where no figures are shown, we have been unable to ascertain the information. All figures that are shown were correct at the time of printing.