



## CURETON STREET, SW1P

£850,000

LEASEHOLD

### At a glance...

- Two Double Bedrooms
- Fabulous Refurbishment
- 1st Floor
- Large Eat-In Kitchen
- Additional WC
- Council Tax Band: D

**Winkworth**

for every step...



Score	Energy rating	Current	Potential
92+	A		
81-91	B		
69-80	C	76 C	82 B
55-68	D		
39-54	E		
21-38	F		
1-20	G		

## CURETON STREET, SW1P

£850,000

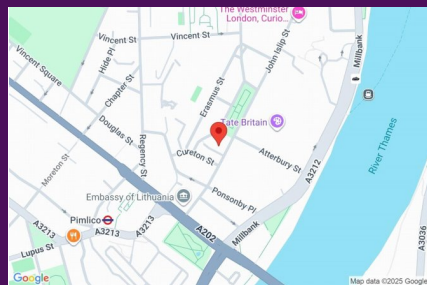
LEASEHOLD

Positioned on the 1st floor of this well run building on the Millbank Estate and having been completely refurbished by the current owner this apartment offers well over 750 sq ft of immaculate, interior designed accommodation.

Offering a useful entrance hall, large reception room, separate eat-in kitchen, luxurious bathroom plus an extra WC and two good double bedrooms the flat is bright and spacious throughout.

Also benefitting from an external storage cupboard and a large (non-demised) storage room.

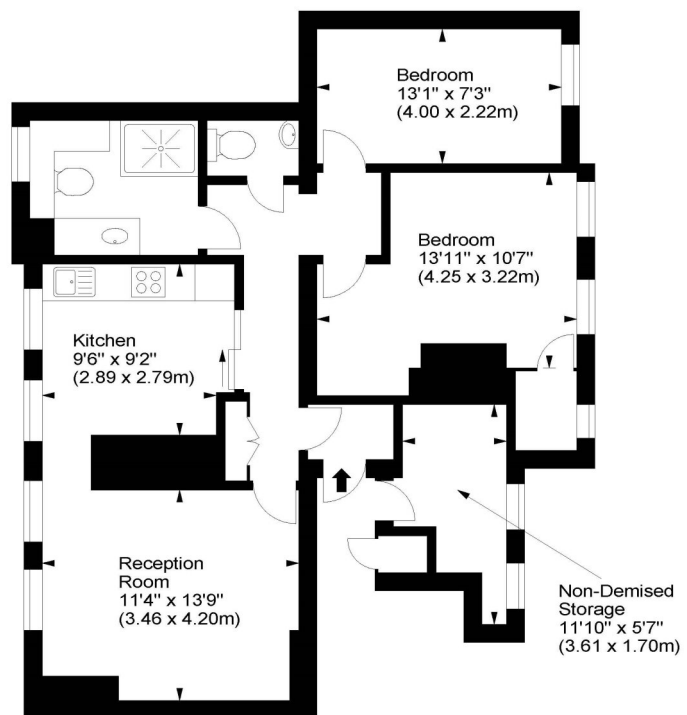
Ideally located for Pimlico underground station and a short walk from Victoria, Westminster and Vauxhall stations this flat would make an ideal London home or safe and secure London base.



winkworth wishes to inform prospective buyers and tenants that these particulars are a guide and act as information only. All our details are given in good faith and believed to be correct at the time of printing but they don't form part of an offer or contract. No winkworth employee has authority to make or give any representation or warranty in relation to this property. All fixtures and fittings, whether fitted or not are deemed removable by the vendor unless stated otherwise and room sizes are measured between internal wall surfaces - including fire-chimneys.

## Landseer House, Cureton Street, SW1

Approx. Gross Internal Area  
755 Sq Ft - 70.14 Sq M  
(Excluding Non-Demised Storage Area)



First Floor

For illustration purposes only. Not to scale.  
All measurements are taken and shown at floor level.  
www.r3photography.co.uk © Photography / Floor Plans / Lease Plans / EPCs



Pimlico & Westminster

020 7828 1786

pimlico@winkworth.co.uk

winkworth.co.uk/pimlico-westminster

**Winkworth**

for every step...