



CORNWALL CRESCENT, W11
£1,850 PER MONTH

FANTASTIC ONE BEDROOM FLOOR ON THE RAISED GROUND OF A GRAND PERIOD BUILDING

North Kensington | 020 7792 5000 | northkensington@winkworth.co.uk

Winkworth

for every step...

winkworth.co.uk



Beautifully presented raised ground floor flat in a stunning period conversion. Benefitting from an amazing high ceiling, this one-bedroom flat is immaculately presented and flooded with natural light.

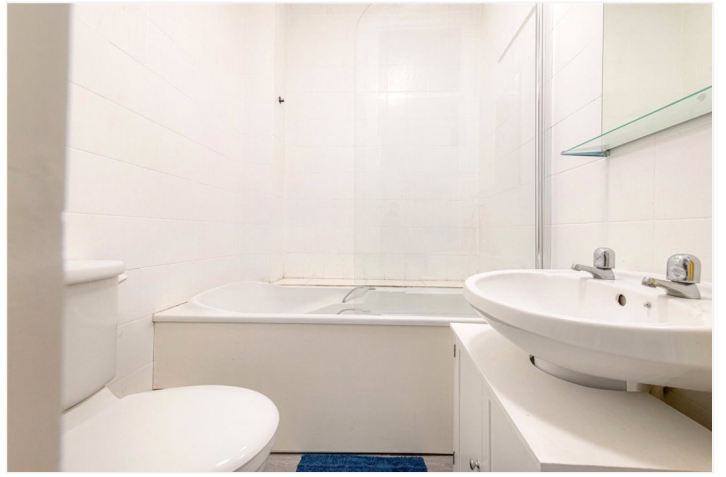
Cornwall Crescent is well located for the amenities of Portobello Road, Westbourne Grove and Goldborne Road with easy access to the Hammersmith, City and Circle Line at Ladbroke Grove.

Comprises a large spacious reception with high ceilings, separate kitchen, modern bathroom, and spacious bedroom.

AT A GLANCE

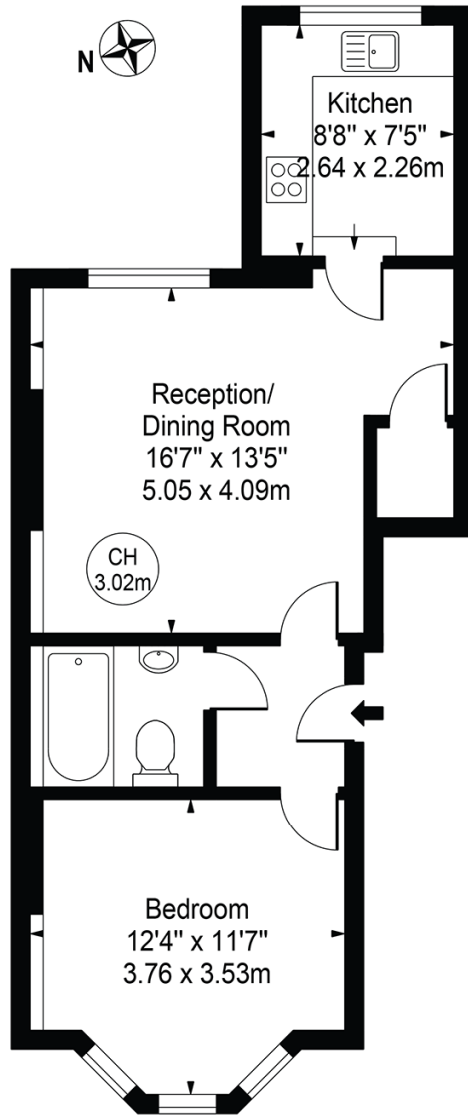
- AMAZING LOCATION
- SPACIOUS
- CLOSE TO TRANSPORT LINKS
- CLOSE TO PORTOBELLO ROAD
- BRIGHT





Cornwall Crescent

Approx. Gross Internal Area 488 Sq Ft - 45.34 Sq M



Ground Floor

For Illustration Purposes Only - Not To Scale

This floor plan should be used as a general outline for guidance only and does not constitute in whole or in part an offer or contract. Any intending purchaser or lessee should satisfy themselves by inspection, searches, enquiries and full survey as to the correctness of each statement. Any areas, measurements or distances quoted are approximate and should not be used to value a property or be the basis of any sale or let.

Copyright Morriarti Photography & Design LTD

This floorplan is for illustration purposes only and is not to scale. The position and size of doors, windows, appliances and other features are approximate.

Energy Efficiency Rating		Current	Potential
Very energy efficient - lower running costs			
(92)	A		
(81-91)	B		
(69-80)	C		
(55-68)	D	69	79
(39-54)	E		
(21-38)	F		
(1-20)	G		
Not energy efficient - higher running costs			
England, Scotland & Wales		EU Directive 2002/91/EC	

North Kensington | 020 7792 5000 | northkensington@winkworth.co.uk

Winkworth

for every step...

winkworth.co.uk

Winkworth wishes to inform prospective buyers and tenants that these particulars are a guide and act as information only. All our details are given in good faith and believed to be correct at the time of printing but they don't form part of an offer or contract. No Winkworth employee has authority to make or give any representation or warranty in relation to this property. All fixtures and fittings, whether fitted or not are deemed removable by the vendor unless stated otherwise and room sizes are measured between internal wall surfaces, including furnishings.