



GRENVILLE STREET, WC1N
£550,000 SHARE OF FREEHOLD

Winkworth



GRENVILLE STREET, WC1N

A bright and spacious one bedroom ground floor flat set within this very lovely portered block overlooking Brunswick gardens.

Although it is in need of updating, it offers a great opportunity to craft a beautifully updated home in one of central London's most desirable locations.

The flat is ideally located in Bloomsbury and benefits from great transport links with Russell Square Tube, Euston and St Pancras all close by. Russell Square Garden's and the Brunswick Centre are just moments away.

The block is beautifully kept with a large sinking fund in place and there is no onward chain.

Leasehold plus Share of Freehold: Approx. 988 years remaining

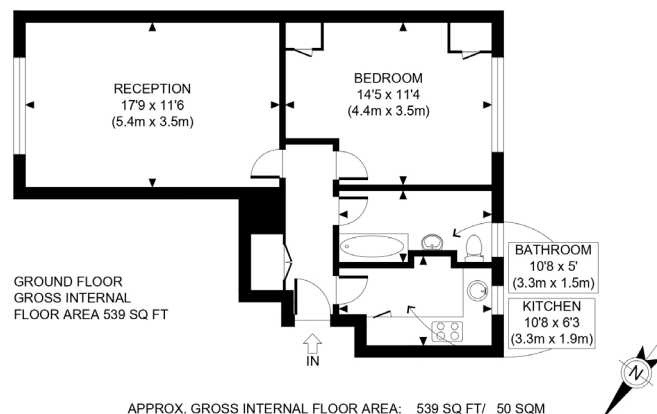
Service Charge: Approx. £6,500 per annum (include heating, hot water, lift maintenance, sinking fund, cleaning of common parts, and porter)

Ground Rent: N/A

Council Tax: Band D Payable £2,107







Winkworth

This plan is for illustrative purposes only and should be used as such by any prospective client. Whilst every attempt has been made to ensure the accuracy of the Floor Plan contained here, measurements of the doors, windows, rooms and any other items are approximate and no responsibility is taken for any errors, omissions, or misstatement. The services, systems and appliances shown have not been tested and no guarantee as to the operability or efficiency can be given.

PROPERTY PHOTO PLANS © 2018

Score	Energy rating	Current	Potential
92+	A		
81-91	B		
69-80	C		
55-68	D	61 D	68 D
39-54	E		
21-38	F		
1-20	G		

West End | 020 7240 3322 | westend@winkworth.co.uk

winkworth.co.uk

Winkworth wishes to inform prospective buyers and tenants that these particulars are a guide and act as information only. All our details are given in good faith and believed to be correct at the time of printing but they don't form part of an offer or contract. No Winkworth employee has authority to make or give any representation or warranty in relation to this property. All fixtures and fittings, whether fitted or not are deemed removable by the vendor unless stated otherwise and room sizes are measured between internal wall surfaces, including furnishings.

Winkworth