



QUEENS DRIVE, FINSBURY PARK, N4

£420 PER WEEK FURNISHED, PART FURNISHED, UNFURNISHED

A SPACIOUS TWO BEDROOM FLAT SET ON THE FIRST FLOOR OF THIS PERIOD CONVERSION

Islington | 0207 354 2480 | islington@winkworth.co.uk

Tenant Fees Apply: Details of fees for tenant referencing, tenancy agreement admin fees and renewal fees are available on the Winkworth website and the link can be found with the displayed rent for the property. Tenants should ensure they are fully conversant with these upfront fees and other costs that are involved at the outset of the tenancy before making an offer to rent and your local Winkworth office will provide written details upon request.

[winkworth.co.uk](https://www.winkworth.co.uk)

Winkworth

See things differently



DESCRIPTION:

A spacious two bedroom flat set on the first floor of this period conversion. The property comprises of a large reception room and bedroom, second study room, renovated kitchen and newly fitted bathroom. Ideal for a couple, the property benefits from an excellent array of amenities within close distance, with Highbury Fields, Clissold Park and Finsbury Park just moments away. The nearest public transport links are Arsenal Underground Station and Finsbury Park Tube Station. Unfurnished or furnished.

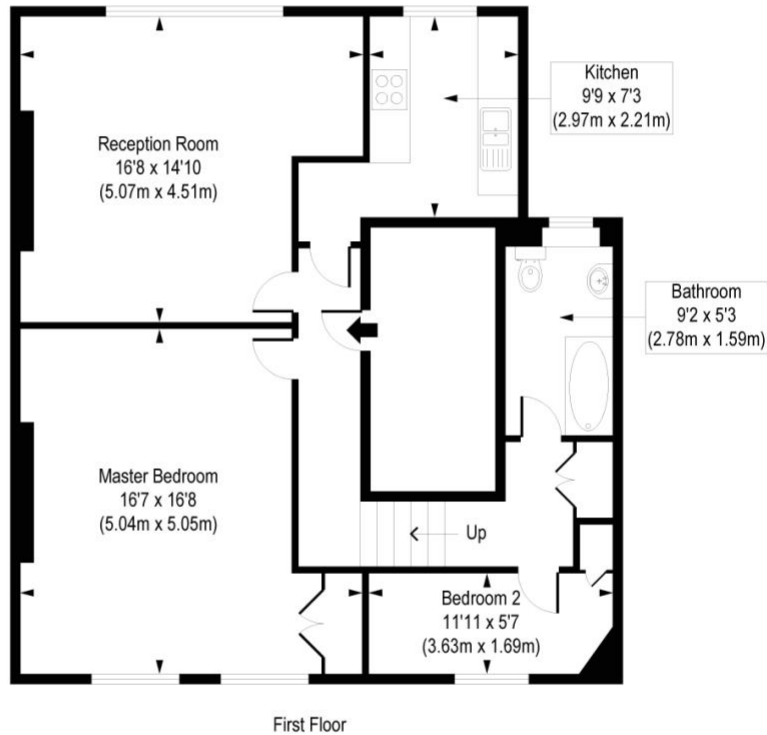
Winkworth



Winkworth

Queens Drive, N4

Approx. Gross Internal Area 764 sq. ft / 71.02 sq. m



COMPLIANT WITH RICS CODE OF MEASURING PRACTICE Floorplan is for illustrative purposes only and is not to scale. Every attempt has been made to ensure the accuracy of the floorplan shown, however all measurements, fixtures, fittings and data shown are an approximate interpretation for illustrative purposes only. Liability for errors, omissions or mis-statement through negligence or otherwise is hereby excluded.

This floorplan is for illustration purposes only and is not to scale. The position and size of doors, windows, appliances and other features are approximate.

Islington | 0207 354 2480 | islington@winkworth.co.uk

Winkworth

winkworth.co.uk

See things differently

Winkworth wishes to inform prospective buyers and tenants that these particulars are a guide and act as information only. All our details are given in good faith and believed to be correct at the time of printing but they don't form part of an offer or contract. No Winkworth employee has authority to make or give any representation or warranty in relation to this property. All fixtures and fittings, whether fitted or not are deemed removable by the vendor unless stated otherwise and room sizes are measured between internal wall surfaces, including furnishings.