



CAMBRIDGE ROAD SOUTH, CHISWICK, W4

£1,600 PER MONTH FURNISHED, PART FURNISHED, UNFURNISHED

BEAUTIFUL GARDEN FLAT IN FANTASTIC LOCATION

Chiswick | 020 8994 7096 | chiswick@winkworth.co.uk

Winkworth

for every step...

winkworth.co.uk



DESCRIPTION:

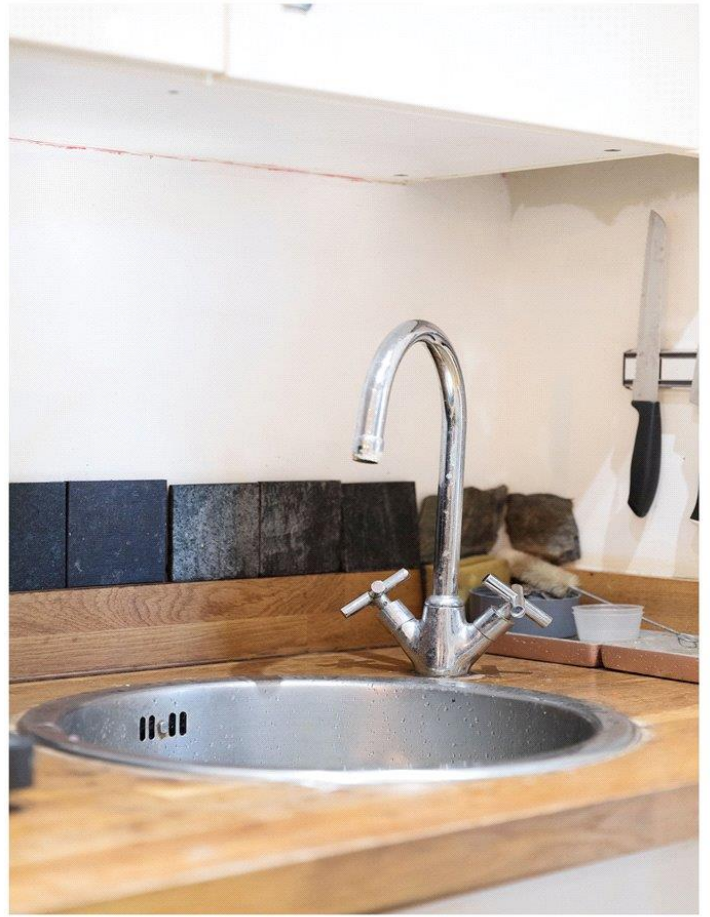
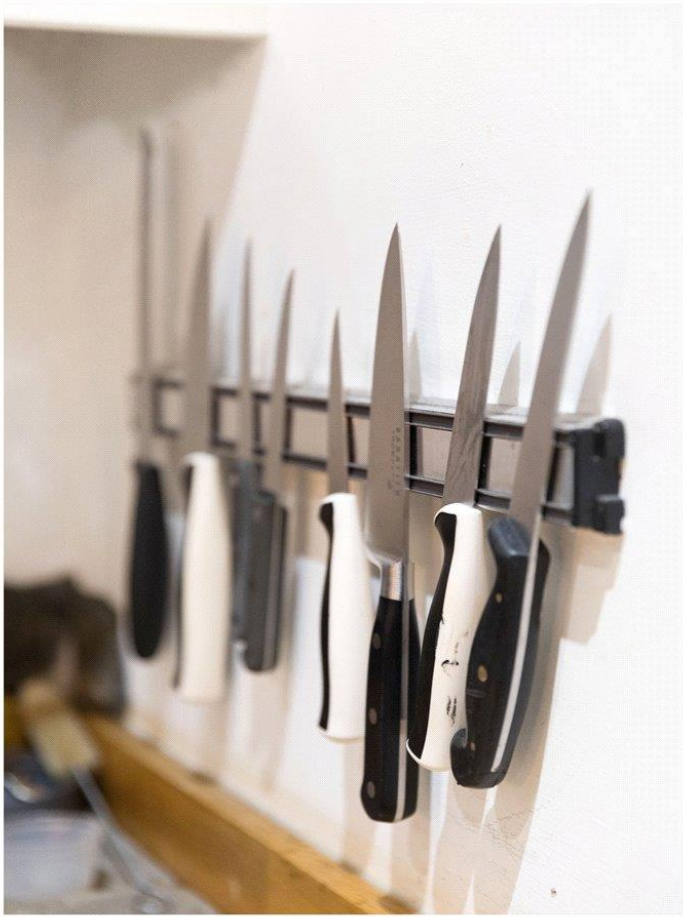
Winkworth Chiswick is proud to offer this stunning period conversion, steeped in charm and character, moments from the river.

The property boasts a generous master bedroom with storage aplenty and a gorgeous cosy living room with garden views and a real wood burner - perfect for the wintry weather when it arrives.



Winkworth

for every step...

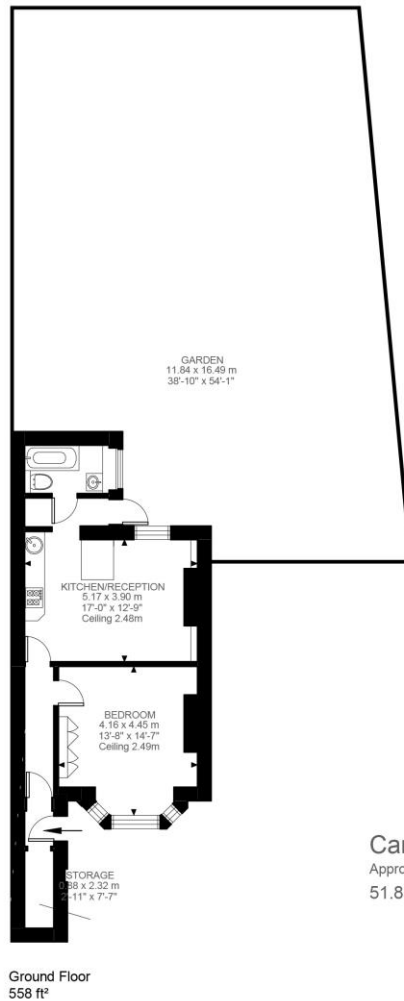


Winkworth

for every step...

[winkworth.co.uk](https://www.winkworth.co.uk)

S ← → N



Cambridge Road South, W4
Approximate Gross Internal Area
51.88 SQ.M / 558 SQ.FT

Illustration for identification purposes only. Not to scale.
Floor Plan Drawn According To RICS Guidelines.

This floorplan is for illustration purposes only and is not to scale. The position and size of doors, windows, appliances and other features are approximate.

Chiswick | 020 8994 7096 | chiswick@winkworth.co.uk

Winkworth

for every step...

winkworth.co.uk

Winkworth wishes to inform prospective buyers and tenants that these particulars are a guide and act as information only. All our details are given in good faith and believed to be correct at the time of printing but they don't form part of an offer or contract. No Winkworth employee has authority to make or give any representation or warranty in relation to this property. All fixtures and fittings, whether fitted or not are deemed removable by the vendor unless stated otherwise and room sizes are measured between internal wall surfaces, including furnishings.