

STEPHEN COURT, DISS STREET, LONDON, E2
£375,000 LEASEHOLD

**AN EXCEPTIONAL STUDIO APARTMENT
WITHIN A MODERN DEVELOPMENT IN THE
HEART OF SHOREDITCH.**

Shoreditch | 020 7749 7650 | shoreditch@winkworth.co.uk

Winkworth

winkworth.co.uk

See things differently



DESCRIPTION:

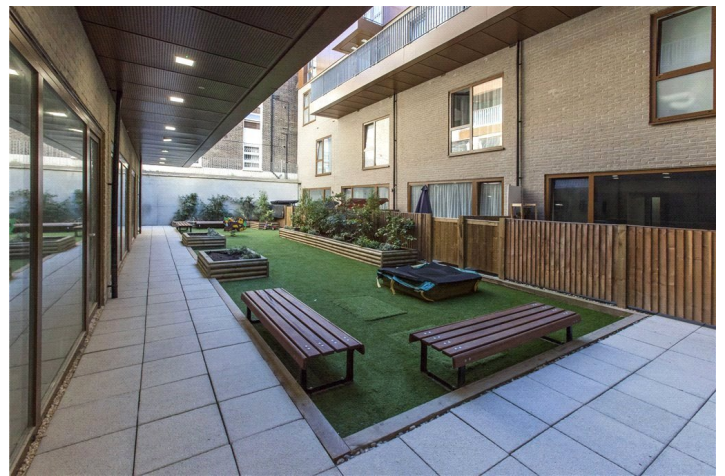
The property comprises 17'7ft kitchen/reception room with built in appliances including: fridge/freezer, induction hob, electric oven, extractor fan, washing machine, dishwasher and plenty of storage space, double bedroom area and bathroom with three-piece suite, wall mounted mirror and chrome towel rail, spotlights and tiled flooring.

Further benefits include under floor heating, wooden flooring, secure entry phone system, communal gardens and a roof terrace.

Stephen Court can be found on the corner of Diss Street/Hackney Road and is ideally placed within easy walking distance to a range of transport options. Hoxton, Shoreditch High Street and Haggerston Overground Stations are all close by as well as Liverpool Street and Old Street underground stations providing access to the Central, Circle, Metropolitan, Hammersmith & City underground lines, the Northern Line and fast links to Heathrow, London City and Stansted airports.

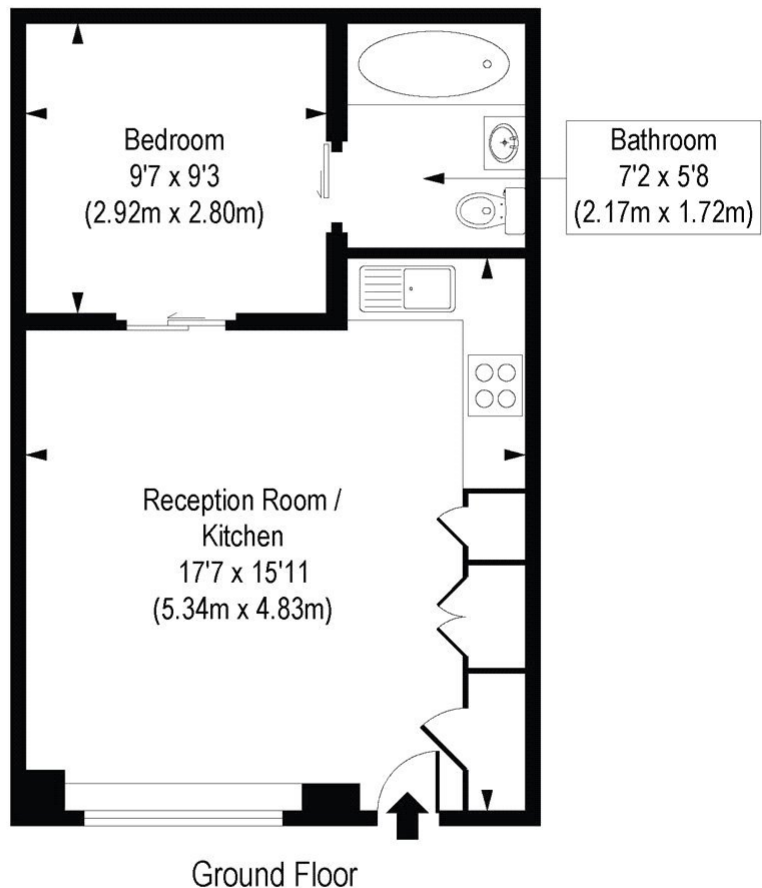
Being offered chain free.

Winkworth



Winkworth

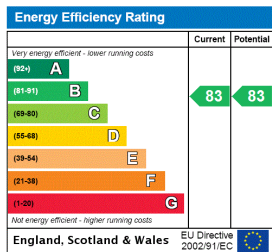
Stephen Court, E2



Ground Floor

COMPLIANT WITH BICS CODE OF MEASURING PRACTICE. Floorplan is for illustrative purposes only and is not to scale. Every attempt has been made to ensure the accuracy of the floorplan shown, however all measurements, fixtures, fittings and data shown are an approximate interpretation for illustrative purposes only. Liability for errors, omissions or mis-statement through negligence or otherwise is hereby excluded.

This floorplan is for illustration purposes only and is not to scale. The position and size of doors, windows, appliances and other features are approximate.



Shoreditch | 020 7749 7650 | shoreditch@winkworth.co.uk



winkworth.co.uk

See things differently

Winkworth wishes to inform prospective buyers and tenants that these particulars are a guide and act as information only. All our details are given in good faith and believed to be correct at the time of printing but they don't form part of an offer or contract. No Winkworth employee has authority to make or give any representation or warranty in relation to this property. All fixtures and fittings, whether fitted or not are deemed removable by the vendor unless stated otherwise and room sizes are measured between internal wall surfaces, including furnishings.