



QUEENS WALK, KINGSBURY, LONDON, NW9
£760,000 FREEHOLD

FOUR BEDROOM DETACHED CORNER PLOT ON A SOUGHT-AFTER ROAD

Kingsbury | 020 8204 0000 | kingsbury@winkworth.co.uk

Winkworth

for every step...

winkworth.co.uk



This detached house is positioned on a generous plot, offering generous scope for expansion and modernization (STPP). This cherished family asset eagerly awaits its new owners to infuse it with their modern flair and create cherished memories of their own. Boasting two reception rooms, and an open-plan kitchen/dining area, as well as a convenient bedroom and modern wet room on the ground floor. Upstairs, a further three well-proportioned bedrooms provide comfortable retreats, while a bathroom and separate W/C cater to practical needs. Externally, the property offers a well sized garden, and convenient garage ensures storage needs are met, complemented by ample off-street parking for added convenience. Situated midway between the vibrant hubs of Kingsbury and Wembley, residents enjoy easy access to an array of amenities, attractions, and transport links. Don't miss the chance to transform this property into your dream home.

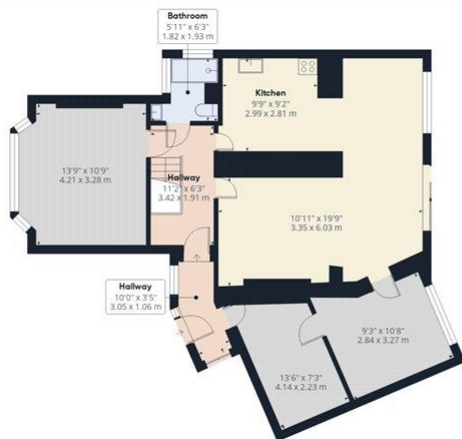


Winkworth

for every step...

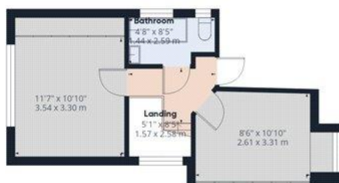


Winkworth
for every step...



Ground Floor

Approximate total area⁽¹⁾
1205 ft²
112 m²



Floor 1

(1) Excluding balconies and terraces

Calculations reference the RICS IPMS 3C standard. Measurements are approximate and not to scale. This floor plan is intended for illustration only.

GIRAFFE360

This floorplan is for illustration purposes only and is not to scale. The position and size of doors, windows, appliances and other features are approximate.

Score	Energy rating	Current	Potential
92+	A		
81-91	B		
69-80	C		
55-68	D	62 D	
39-54	E		
21-38	F		
1-20	G		

Tenure: Freehold

Council Tax Band: F - Brent

All figures that are shown were correct at the time of printing.

Kingsbury | 020 8204 0000 | kingsbury@winkworth.co.uk

Winkworth

for every step...

winkworth.co.uk

Winkworth wishes to inform prospective buyers and tenants that these particulars are a guide and act as information only. All our details are given in good faith and believed to be correct at the time of printing but they don't form part of an offer or contract. No Winkworth employee has authority to make or give any representation or warranty in relation to this property. All fixtures and fittings, whether fitted or not are deemed removable by the vendor unless stated otherwise and room sizes are measured between internal wall surfaces, including furnishings.