



ARUNDEL GARDENS, W11

£1,995,000 SHARE OF FREEHOLD (956 YEARS REMAINING)

A WONDERFULLY BRIGHT, THREE-BEDROOM UPPER MAISONETTE IN EXCELLENT CONDITION WITH A LARGE BALCONY AND ACCESS TO COMMUNAL GARDENS.

3 Bedrooms, 1 Reception Room, 2 Bathrooms, Flat/Apartment, Roof Terrace, Balcony, Communal Gardens, 1216 Approx Sq Ft, Service Charge as and when, Ground Rent N/A

Winkworth

Notting Hill Sales | 0207 727 3227 | nottinghill@winkworth.co.uk

winkworth.co.uk

for every step...



DESCRIPTION:

Entered on the third floor of this grand period conversion on Arundel Gardens, this wonderfully bright and spacious apartment extends to 1,216sq.ft. The accommodation is arranged over two floors, and comprises; three bedrooms, the principal bedroom ensuite, and a family bathroom. On the upper floor is the large, open-plan reception room, dining room and kitchen. Accordion doors push back and lead to the large balcony with far reaching views and overlooking the communal gardens. The flat comes with the right to apply for access to the Arundel Communal Gardens, which are a rare gem.

LOCATION:

Arundel Gardens is an impressive and well-located residential street set between two sets of communal gardens in the heart of Notting Hill, running between Kensington Park Road and Ladbroke Grove, a short stroll from some of Notting Hill's most popular restaurants and boutiques.

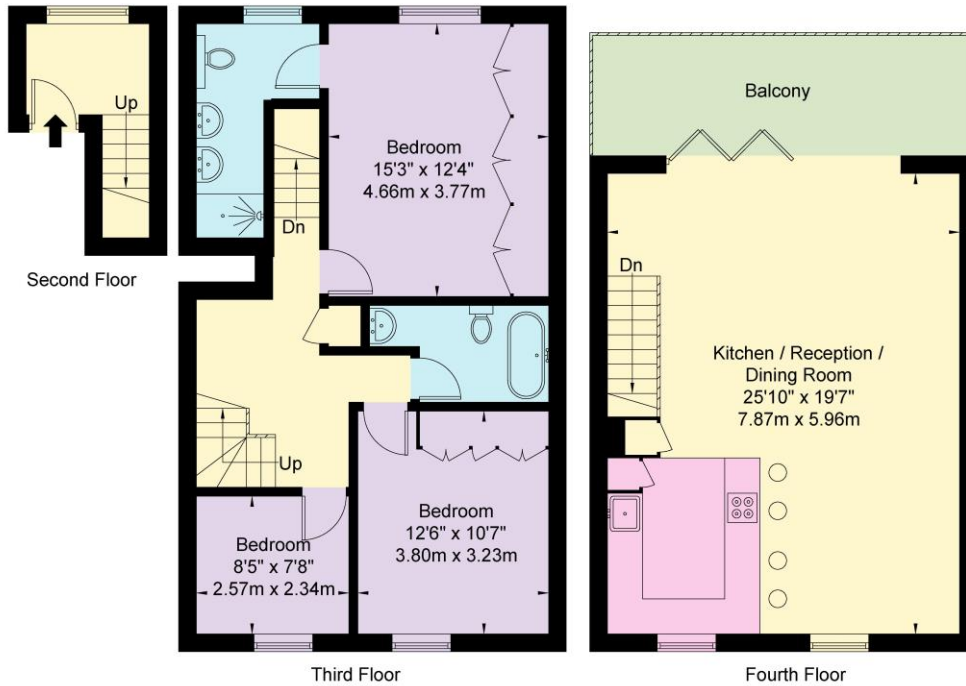
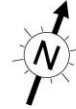
LOCAL AUTHORITY AND COUNCIL TAX BAND:

Royal Borough of Kensington and Chelsea (Band G)



Arundel Gardens W11 2LA

Approx. Gross Internal Area = 113.0 sq m / 1216 sq ft

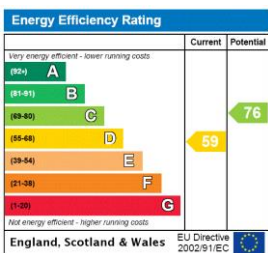


Ref

Copyright **BLEU PLAN**

The Floor plan is not to scale and measurements and areas shown are approximate and therefore should be used for illustrative purposes only. The plan has been prepared in accordance with the RICS code of Measuring Practice and whilst we have confidence in the information produced it must not be relied on. If there is any aspect of particular importance, you should carry out or commission your own inspection of the property.
Copyright @ BLEUPLAN

This floorplan is for illustration purposes only and is not to scale. The position and size of doors, windows, appliances and other features are approximate.



Notting Hill Sales | 0207 727 3227 | nottinghill@winkworth.co.uk



winkworth.co.uk

for every step...

winkworth wishes to inform prospective buyers and tenants that these particulars are a guide and act as information only. All our details are given in good faith and believed to be correct at the time of printing but they don't form part of an offer or contract. No Winkworth employee has authority to make or give any representation or warranty in relation to this property. All fixtures and fittings, whether fitted or not are deemed removable by the vendor unless stated otherwise and room sizes are measured between internal wall surfaces, including furnishings.