



PAXTON ROAD, LONDON, SE23
£295,000 LEASEHOLD

LOVELY MODERN ONE BEDROOM FLAT

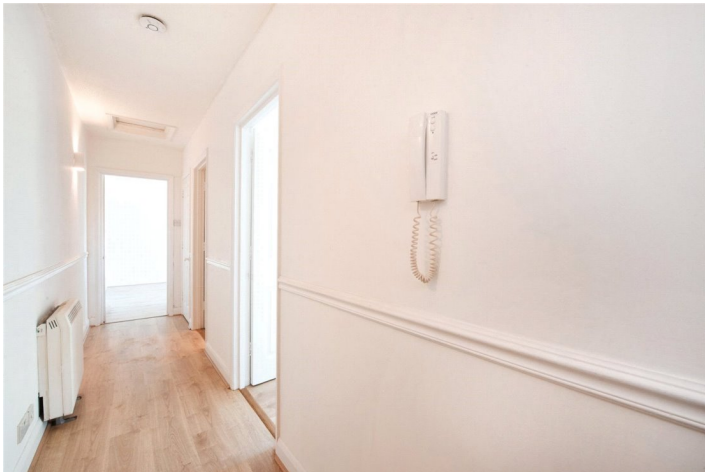
Forest Hill | | foresthill@winkworth.co.uk



DESCRIPTION:

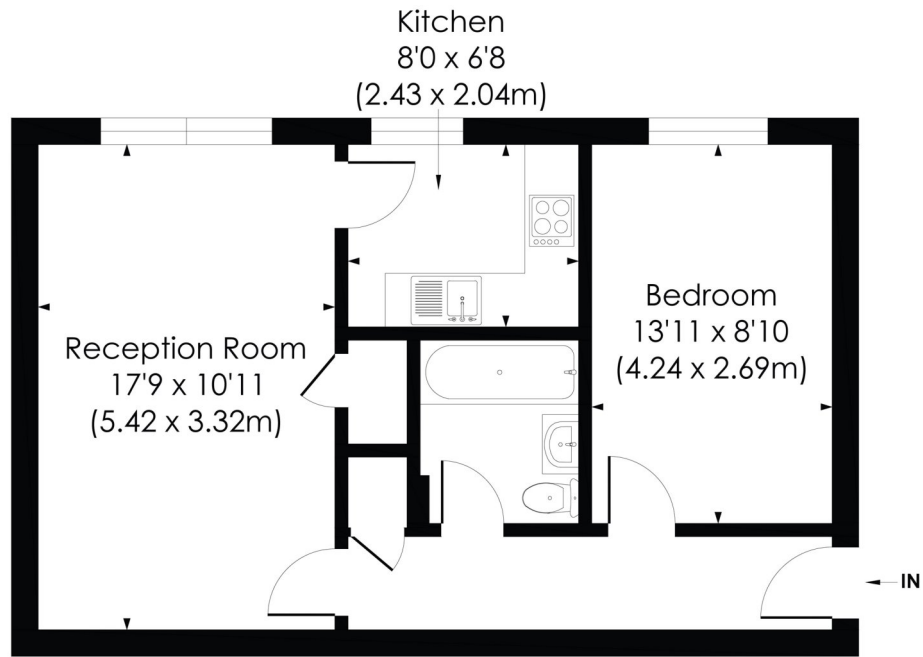
One Double Bedroom | Three Piece Bathroom | Top floor flat | Laminate flooring throughout | Genuine double bedroom | Large living area | Private off street parking | complex with swimming pool | Bike Shed | communal gardens | Unfurnished | Available August 2023





PAXTON ROAD, SE27

Approx. Gross Internal Floor Area
511 Sq. ft/47.51 Sq. m



SECOND FLOOR

© Pixangle Property Marketing Ltd. info@pixangle.com Tel: 0208 870 2118

pixangle
PROPERTY MARKETING

This floor plan has been prepared for the purpose of illustration only in accordance with the latest RICS code of measuring practice and is not to scale. All measurements and areas are approximate and whilst every effort has been made to ensure the accuracy of the plan contained here, no responsibility is taken for any error, omission or misstatement.

This floorplan is for illustration purposes only and is not to scale. The position and size of doors, windows, appliances and other features are approximate.

Score	Energy rating	Current	Potential
92+	A		
81-91	B		
69-80	C		
55-68	D	66 D	68 D
39-54	E		
21-38	F		
1-20	G		

Tenure: Leasehold