



GREAT PULTENEY STREET, BA2
£235,000 TO BE ADVISED

Winkworth



GREAT PULTENEY STREET, BA2

A well-presented one bedroom apartment in this impressive building on Great Pulteney Street. Level walk into the centre of Bath. Residents over 55 year +

Number 33 Great Pulteney Street is situated at the Sydney Gardens end of the street a level walk into Bath. Great Pulteney Street is a grand and impressive parade that connects Bathwick with the city of Bath.

Description

This one bedroom apartment is situated on the second floor of a beautifully maintained, Georgian Grade I listed town house, specifically for residents aged 55+.

The apartment is light and spacious with a delightful outlook over the communal gardens and beyond. It has a large living room, separate kitchen, double bedroom with wardrobes, and a shower room.

Residents at the property benefit from communal facilities including a sitting room, kitchen, fully equipped laundry room and a garden. There is a fully furnished guest suite for use by visitors for a small charge. A manager and alarm system provide further peace of mind. A grand communal entrance hall with staircase and passenger lift to all floors provides an excellent welcome to the property for residents and visitors.

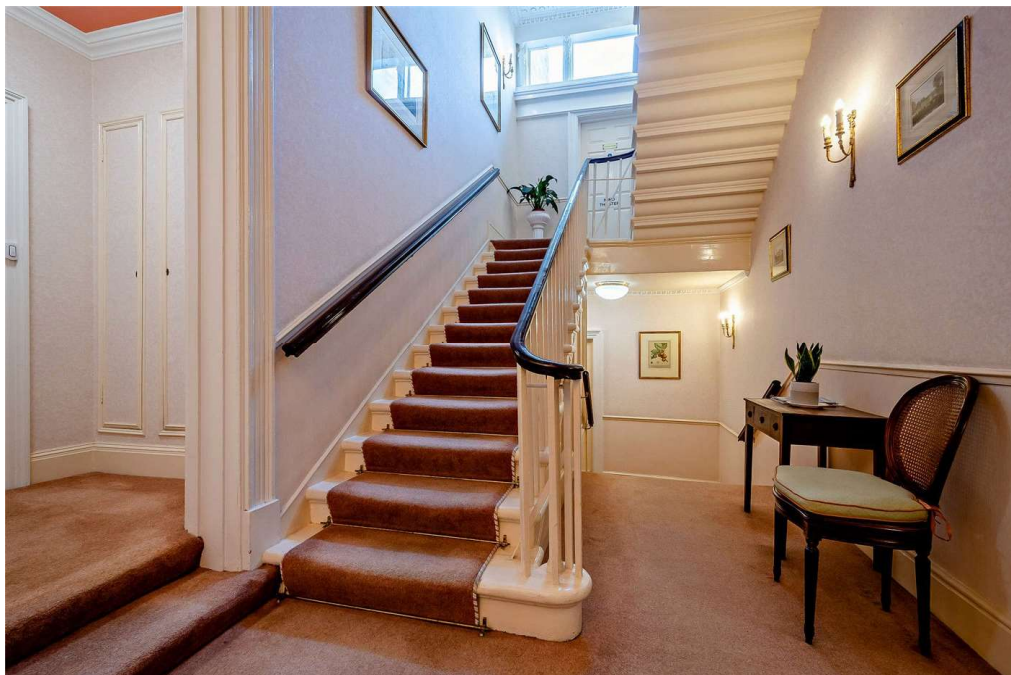
Outside, the communal garden is situated to the rear of the building. It is mainly laid to lawn with seating areas, mature trees and planting.

Level access from the gardens into the Henrietta Gardens

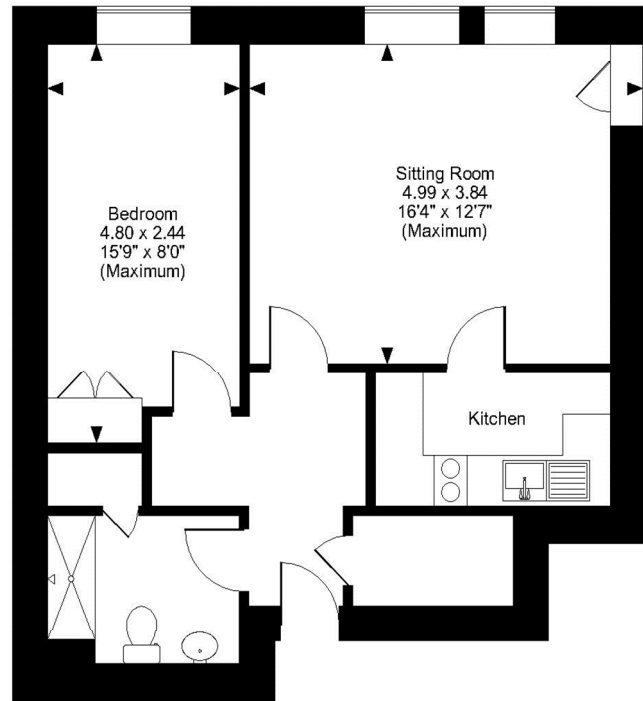
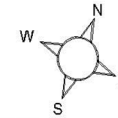
Tenure Freehold

Service Charge £x per month to include water rates.





Great Pulteney Street, Bath, Somerset
Approximate Gross Internal Area
525 Sq Ft/49 Sq M



Second Floor

FOR ILLUSTRATIVE PURPOSES ONLY - NOT TO SCALE

The position & size of doors, windows, appliances and other features are approximate only.
© ehouse. Unauthorised reproduction prohibited. Drawing ref. dig/8468359/DMS

AGENT'S NOTE

The lease contains specific arrangements for the re-sale of apartments. Re-sales are conducted on the seller's behalf by the freeholder, Retirement Properties Limited. The arrangements for the fees and costs which apply to this process have been amended by voluntary agreement with the Competition and Markets Authority. The sellers will be responsible for the fees of estate agents, solicitors and any other costs such as for an EPC, and in addition a fee calculated at 4% of the lower of the sale price or the seller's original purchase price, is payable to the freeholder.