

CHEVERELL HOUSE, TEALE STREET, LONDON, E2
£2250 PER MONTH FURNISHED

IMMACULATELY PRESENTED TWO BEDROOM
LOCATED MOMENTS FROM BROADWAY
MARKET.

Shoreditch | 020 7749 7650 | shoreditch@winkworth.co.uk

Winkworth

Tenant Fees Apply: Details of fees for tenant referencing, tenancy agreement admin fees and renewal fees are available on the Winkworth website and the link can be found with the displayed rent for the property. Tenants should ensure they are fully conversant with these upfront fees and other costs that are involved at the outset of the tenancy before making an offer to rent and your local Winkworth office will provide written details upon request.

winkworth.co.uk

See things differently



DESCRIPTION:

An immaculately presented two double bedroom boasting a meticulous renovation throughout with an abundance of natural light throughout.

Set on the first floor of a secure mansion block you enter through a generous foyer with ample storage. The property consists of two well-proportioned bedrooms suitable for both sharers or if working from home. The kitchen leads off the living space which have both been finished to a very high standard with a fantastic eye for detail making it the perfect home.

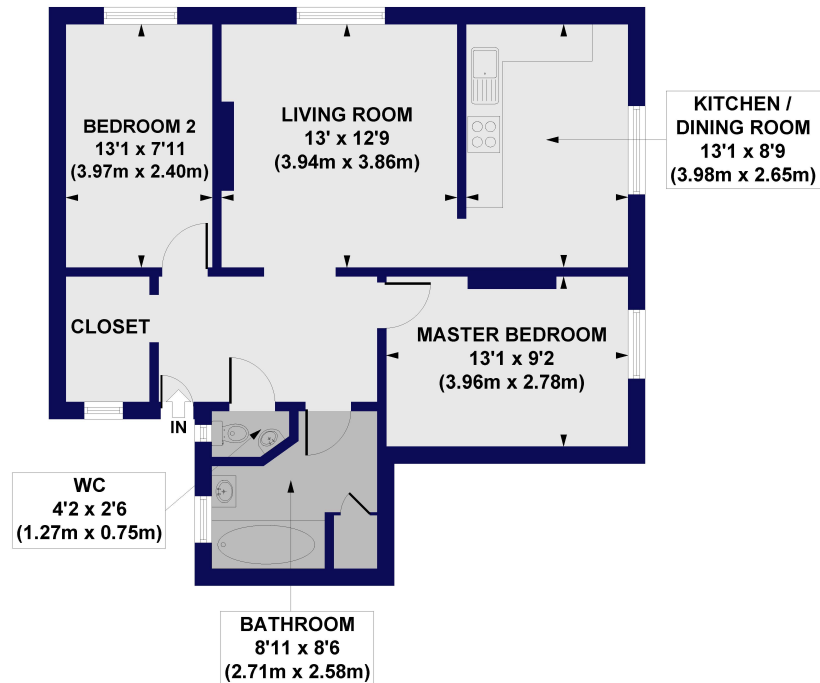
Located a short distance from Broadway Market, Columbia Road and 0.3 miles from Cambridge Heath Station.

Winkworth



Winkworth

Cheverell House, Teale Street, E2
Approx. Gross Internal Floor Area 724 sq. ft / 67.30 sq. m



FIRST FLOOR

All measurements of walls, doors, windows, fittings and appliances, including their size and location, are shown as standard sizes and do not constitute any warranty or representation by the seller, their agent or CP Creative. Any intending purchaser must satisfy himself by inspection or otherwise as to the correctness of the information contained in these plans. This plan is for illustrative purposes only and should be used as such by any prospective purchasers.

Winkworth

This floorplan is for illustration purposes only and is not to scale. The position and size of doors, windows, appliances and other features are approximate.

Shoreditch | 020 7749 7650 | shoreditch@winkworth.co.uk

Winkworth

winkworth.co.uk

See things differently

Winkworth wishes to inform prospective buyers and tenants that these particulars are a guide and act as information only. All our details are given in good faith and believed to be correct at the time of printing but they don't form part of an offer or contract. No Winkworth employee has authority to make or give any representation or warranty in relation to this property. All fixtures and fittings, whether fitted or not are deemed removable by the vendor unless stated otherwise and room sizes are measured between internal wall surfaces, including furnishings.