



4 The Byre, Hinton Manor, Catherington, Waterlooville, Hampshire, PO8

£2,000 per calendar month

A fantastic opportunity to rent a stunning barn in a gorgeous location.

Principal bedroom with en suite, two further bedrooms, family bathroom, sitting room, dining room, kitchen, utility room, cloakroom, two car ports, courtyard garden. EPC "D" (58).

Winkworth

...for every step

winkworth.co.uk/Petersfield 01730 267274



DESCRIPTION

A wonderful opportunity to rent a spacious semi-detached barn, situated in a gorgeous, semi-rural location. With three double bedrooms, one with en suite shower room, two great reception rooms, kitchen, utility room and cloakroom, there is plenty of space to enjoy this fantastic property. To the front a private courtyard and there is a great communal area of garden that can be used for a variety of activities. The property also has the use of two carports within the courtyard.

LOCATION

The property is situated in a gorgeous, semi-rural location, close to the villages of Clanfield and Lovedean, which boast a number of amenities including pubs, general convenience stores, church, village hall and a number of takeaway restaurants. More extensive amenities can be found in Petersfield, approximately 6 miles to the north where there's a train station providing a direct line to London Waterloo in a little over an hour. The village lies just beyond the boundary of The South Downs National Park which is renowned for its unspoilt countryside and outdoor activities. Further leisure pursuits in the area include golf available at Petersfield and Waterlooville, horse and motor racing at Goodwood, polo at Cowdray Park and sailing along the South Coast. There are many popular schools in the area including Churcher's College, Bedales, Ditcham Park, The Petersfield School and Portsmouth Grammar School.



Services: Mains water, electricity, oil fired heating and private drainage.

LOCAL AUTHORITY

East Hampshire District Council, Petersfield.

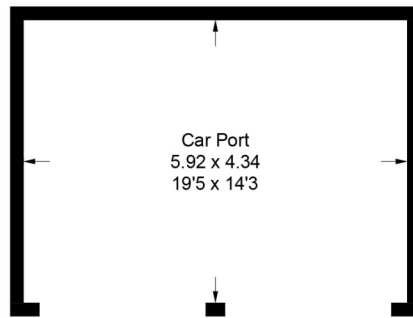
DIRECTIONS

From Petersfield, head south on the A3(M) in the direction of Portsmouth. Having past the exit to the Queen Elizabeth Country Park, take the next exit signposted to Clanfield and Butser Ancient Farm. Proceed back over the A3(M) and at the roundabout take the first exit. Continue along this road, passing Green Lane on the left until you reach the village of Clanfield. Continue south towards Lovedean for 1.9 miles and turn right onto Hinton Manor Lane. Continue along this road until you pass Hinton Manor on your right. Take the next turning on your right and then first right where you will find the property on the right.

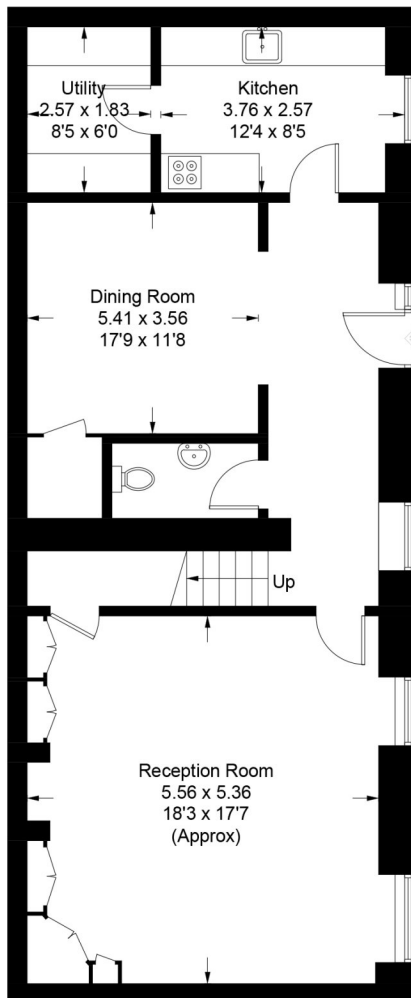


The Byre, Hinton Manor, PO8

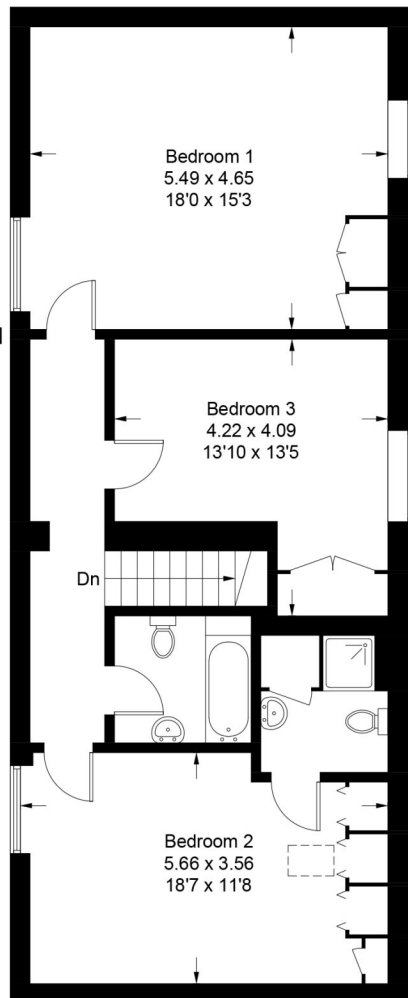
Approximate Gross Internal Area = 162.2 sq m / 1746 sq ft
(Excluding Car Port)



(Not Shown In Actual Location / Orientation)



Ground Floor



First Floor

PRODUCED FOR WINKWORTH ESTATE AGENTS.

Whilst every attempt has been made to ensure the accuracy of the floorplan, measurements of doors, windows and rooms are approximate. These plans are for representation purposes only as defined by RICS Code of Measuring Practice and used as such by any prospective purchaser. Created by Emzo Marketing 2022.

Under the Consumer Protection from Unfair Trading Regulations 2008 (CPR), these Particulars are a guide and act as information only. All details are given in good faith and are believed to be correct at time of printing. Winkworth give no representation as to their accuracy and potential purchasers or tenants must satisfy themselves by inspection or otherwise as to their correctness. No employee of Winkworth has authority to make or give any representation or warranty in relation to this property.