

## Nathan House, Reedworth Street, London, SE11

£475,000 Leasehold

Winkworth presents this well-presented two-bedroom flat on the second floor of this popular, purpose-built block situated in the heart of Kennington. Whilst a quiet road, you are only a stone's throw away from all local amenities that Kennington has to offer, providing a perfect balance between quiet living, and easy access into central London.

## LOCATION

Situated on Reedworth Street, a quiet street just off Kennington Road, this property offers numerous transport links with Kennington, Lambeth North and Elephant & Castle Underground Stations and a wealth of local amenities, being all but a short walk away.

## DESCRIPTION

Winkworth presents this well-presented two-bedroom flat on the second floor of this popular, purpose-built block situated in the heart of Kennington. Whilst a quiet road, you are only a stone's throw away from all local amenities that Kennington has to offer, providing a perfect balance between quiet living, and easy access into central London.

As you enter the property on the second floor you are greeted by a spacious hallway with two large, fitted cupboards. The property benefits from a modern PIV system (positive input ventilation) in the hallway preventing moisture/ damp build up throughout the property.

The reception room to your left includes a bay window creating a beautiful and spacious living environment. There is more than enough space for large sofa, coffee table, TV unit, and additional storage.

The separate kitchen offers a fantastic amount of storage and worktop space, as well as a fully integrated double oven and hob, dishwasher, fridge/freezer, and washing machine. There is also ample space for a dining table and chairs.

Both bedrooms in the property are great sized doubles. The master bedroom has large fitted mirrored sliding wardrobe doors and an additional fitted wardrobe providing ample space for clothing and storage. The second double bedroom includes a fitted wardrobe and has plenty of room for an office/gym, spare bedroom, or children's room.

The bathroom has a modern finish with a bath with overhead shower, W.C., sink with vanity mirror above and storage below, and a heated towel rail.

The block is purpose built and of solid brick construction minimising noise transference and maximising privacy. The communal garden is maintained by a contract gardener with sections of the garden maintained by residents keen to get involved, contributing to a to a positive community spirit.

The flat also benefits from a secure and private storage in the basement.

## LOCAL AUTHORITY

Lambeth

## TENURE

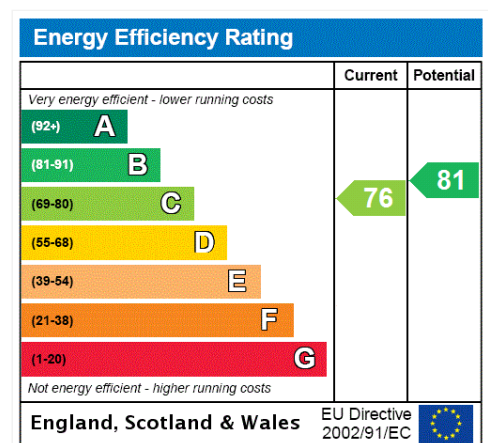
Leasehold - 105 years

Ground Rent - £35 per annum

Service Charge - £2,456.36 per annum

## DIRECTIONS

Kennington Underground (Northern Line) is approximately 720m walk. Lambeth North Underground (Bakerloo Line) is 930m. Elephant & Castle is also just a short walk away. The area is well-served by a frequent bus service into Central London. The property is in the congestion zone with the ample of on street parking.



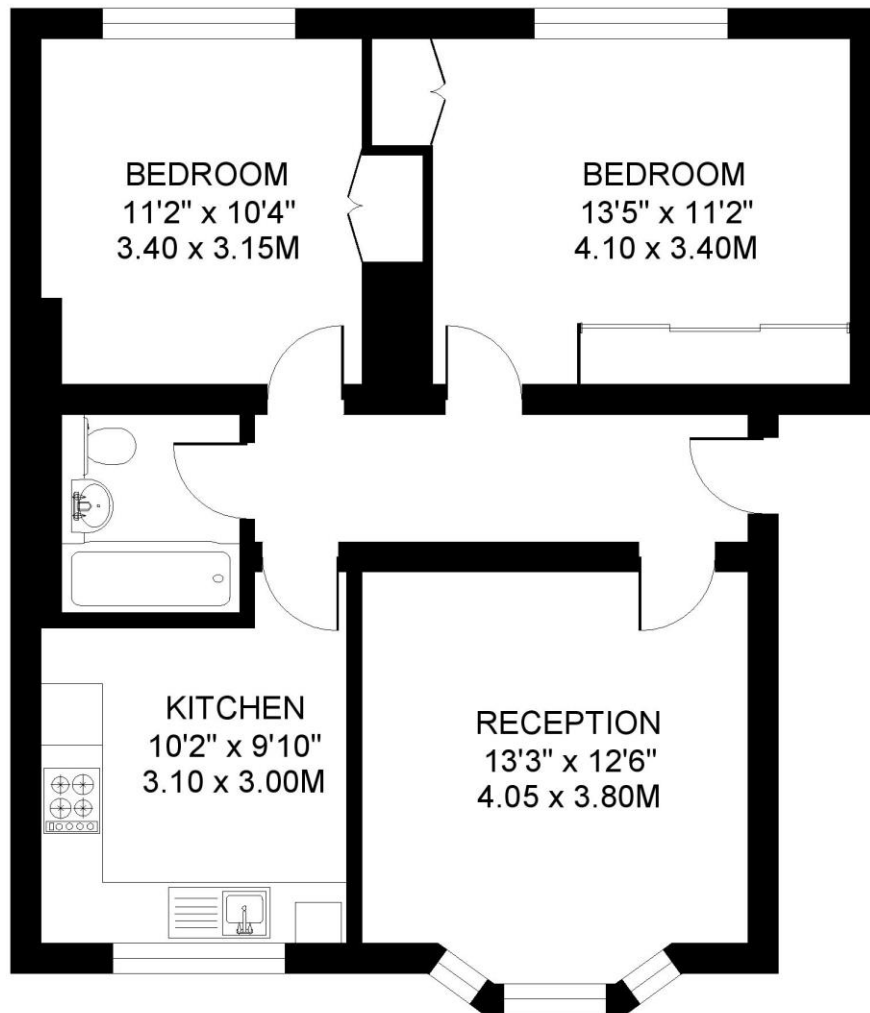
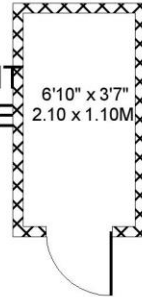


**NATHAN HOUSE SE11  
2 BEDROOM FLAT**

Approximate gross floor area  
**703 SQ.FT. / 65.3 SQ.M.**  
Plus Storage 25 sq.ft. / 2.3 sq.m.



**BASEMENT  
STORAGE  
SHED**



**FIRST FLOOR**

*This floorplan is for illustration purposes only and is not to scale. The position and size of doors, windows, appliances and other features are approximate.*

Copyright: These plans should not be reproduced by any other person, without permission.  
Floorplan produced for Winkworth by Floorplanners 07801 228850

**Kennington** | 020 7587 0600 | [kennington@winkworth.co.uk](mailto:kennington@winkworth.co.uk)