

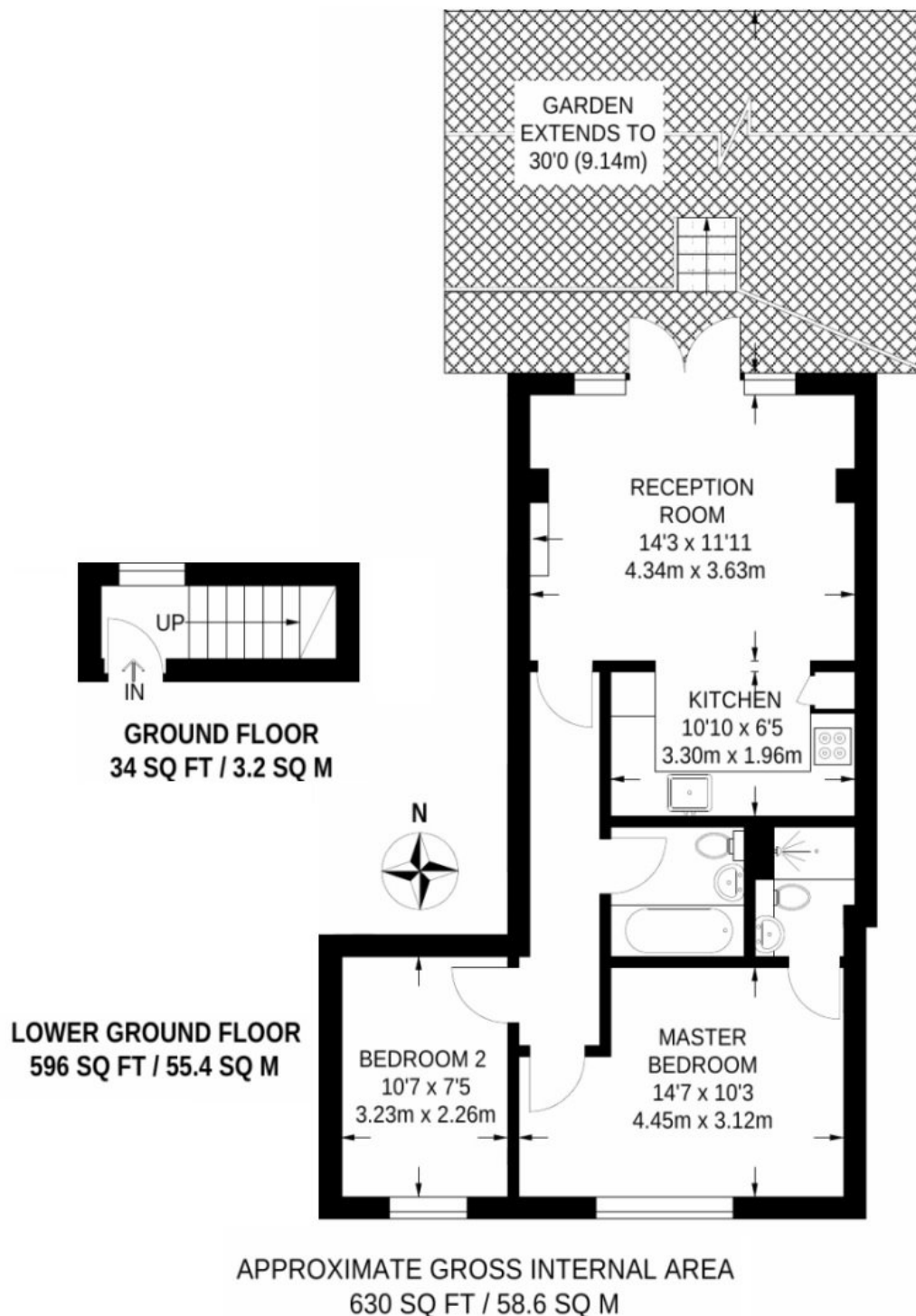


**SHOOTERS HILL ROAD, LONDON, SE3**  
**£1,950 PER MONTH FURNISHED**

**DESCRIPTION:**

A wonderful two bedroom, two bathroom period conversion with direct access to a 30ft private garden found on the lower ground floor of this impressive four storey detached Victorian house located close to the Heath.

**Blackheath** | 0208 8520999 | [blackheath@winkworth.co.uk](mailto:blackheath@winkworth.co.uk)



This floorplan is for illustration purposes only and is not to scale. The position and size of doors, windows, appliances and other features are approximate.

**Deposit:** £2,250.00

**Holding Deposit:**

**Council Tax Band:**

Where no figures are shown, we have been unable to ascertain the information. All figures that are shown were correct at the time of printing.