



ST. MARKS ROAD, W10
£1,750 PER MONTH PART FURNISHED

CHARMING STUDIO /ONE BEDROOM APARTMENT LOCATED IN THE HEART OF LADBROKE GROVE

North Kensington | 020 7792 5000 | northkensington@winkworth.co.uk

Tenant Fees Apply: Details of fees for tenant referencing, tenancy agreement admin fees and renewal fees are available on the Winkworth website and the link can be found with the displayed rent for the property. Tenants should ensure they are fully conversant with these upfront fees and other costs that are involved at the outset of the tenancy before making an offer to rent and your local Winkworth office will provide written details upon request.

winkworth.co.uk

Winkworth

for every step...

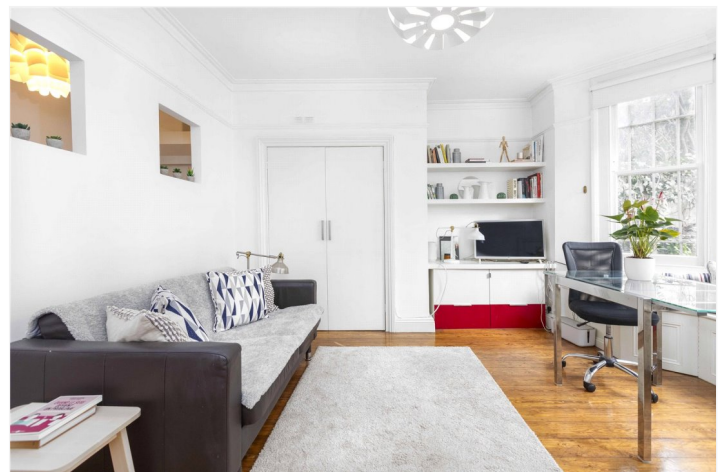


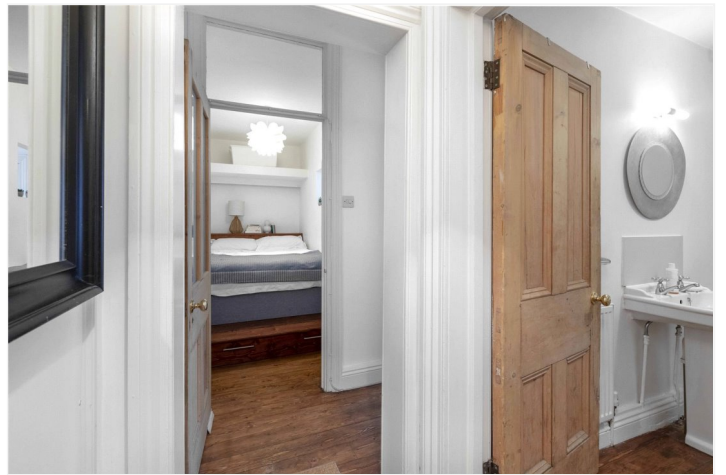
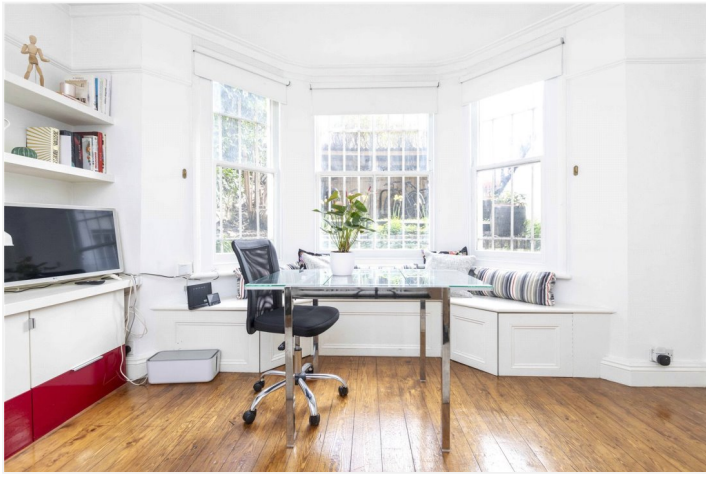
Nestled in a sought-after part of Ladbroke Grove, this charming end-of-terrace studio apartment offers a perfect blend of modern comforts and period charm. The property boasts a spacious living room, well-appointed kitchen, and a cosy bedroom with ample natural light. The apartment comes partially furnished, allowing for easy move-in and immediate enjoyment.

North Kensington's multicultural hotspot, Ladbroke Grove is a prime example of a modern urban living offering plenty of unique restaurants, coffee shops and antique furniture stores. Renowned Portobello market and transport links at Ladbroke Grove are a stone throw away.

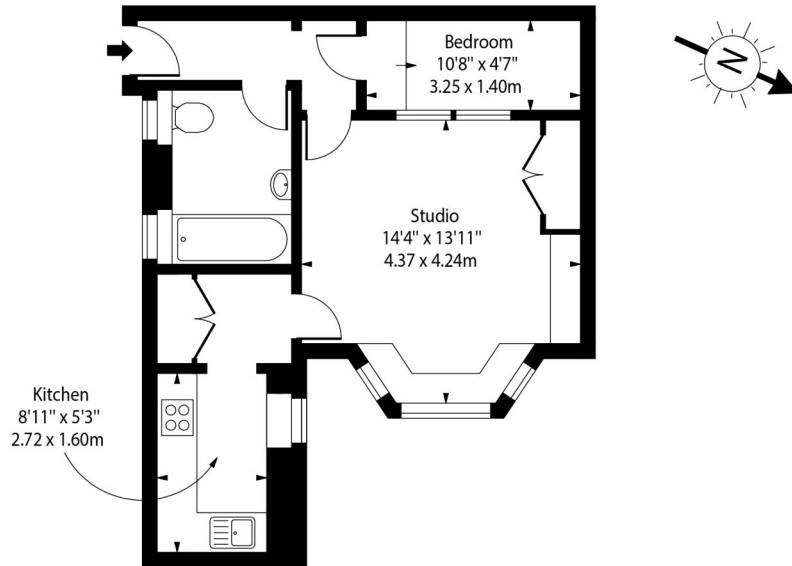
AT A GLANCE

- SPACIOUS
- GREAT LOCATION
- CLOSE TO TRANSPORT LINKS
- CLOSE TO PORTOBELLO ROAD
- ABUNDANCE OF CHARACTER AND CHARM





St. Marks Road, W10



Lower Ground Floor

Approx Gross Internal Area 428 Sq Ft - 39.76 Sq M

For Illustration Purposes Only - Not To Scale Floor Plan by www.epixandplans.com Ref: No.0068

This floor plan should be used as a general outline for guidance only. Any intending purchaser or lessee should satisfy themselves by inspection, searches, enquiries and full survey as to the correctness of each statement. Any areas, measurements or distances quoted are approximate and should not be used to value a property or be the basis of any sale or let.

This floorplan is for illustration purposes only and is not to scale. The position and size of doors, windows, appliances and other features are approximate.

Deposit: £0.00

Council Tax Band:

Where no figures are shown, we have been unable to ascertain the information. All figures that are shown were correct at the time of printing.

North Kensington | 020 7792 5000 | northkensington@winkworth.co.uk

Winkworth

for every step...

winkworth.co.uk

Winkworth wishes to inform prospective buyers and tenants that these particulars are a guide and act as information only. All our details are given in good faith and believed to be correct at the time of printing but they don't form part of an offer or contract. No Winkworth employee has authority to make or give any representation or warranty in relation to this property. All fixtures and fittings, whether fitted or not are deemed removable by the vendor unless stated otherwise and room sizes are measured between internal wall surfaces, including furnishings.