



WILCOX CLOSE, HERTFORDSHIRE, WD6

£500,000 FREEHOLD

CHAIN FREE THREE BEDROOM SEMI DETACHED HOUSE

Borehamwood | 020 8953 8899 | borehamwood@winkworth.co.uk



Winkworth

DESCRIPTION:

Offered on a chain free basis is this lovely 3 bedroom semi-detached House. The property comprises of an enclosed porch with storage leading to a spacious hallway with a downstairs cloakroom. kitchen and lounge diner. The beautiful wrap around garden is accessed via the lounge through French doors. The stairs lead from the lounge up to the three bedrooms and family bathroom.

Wilcox Close is a quiet residential cul-de-sac on the outskirts of the town centre but easily close enough to benefit from the multiple shopping facilities, local amenities and travel links that the area has to offer.

The property offers potential to extend subject to the usual planning permissions.

AT A GLANCE

- 3 Bedrooms
- Entrance Hall
- Cloakroom
- Kitchen
- Living Room
- Bathroom
- Garden



Winkworth



Winkworth



Winkworth



Winkworth



Winkworth



Winkworth



Winkworth

Approximate Gross Internal Area = 80.4 sq m / 865 sq ft

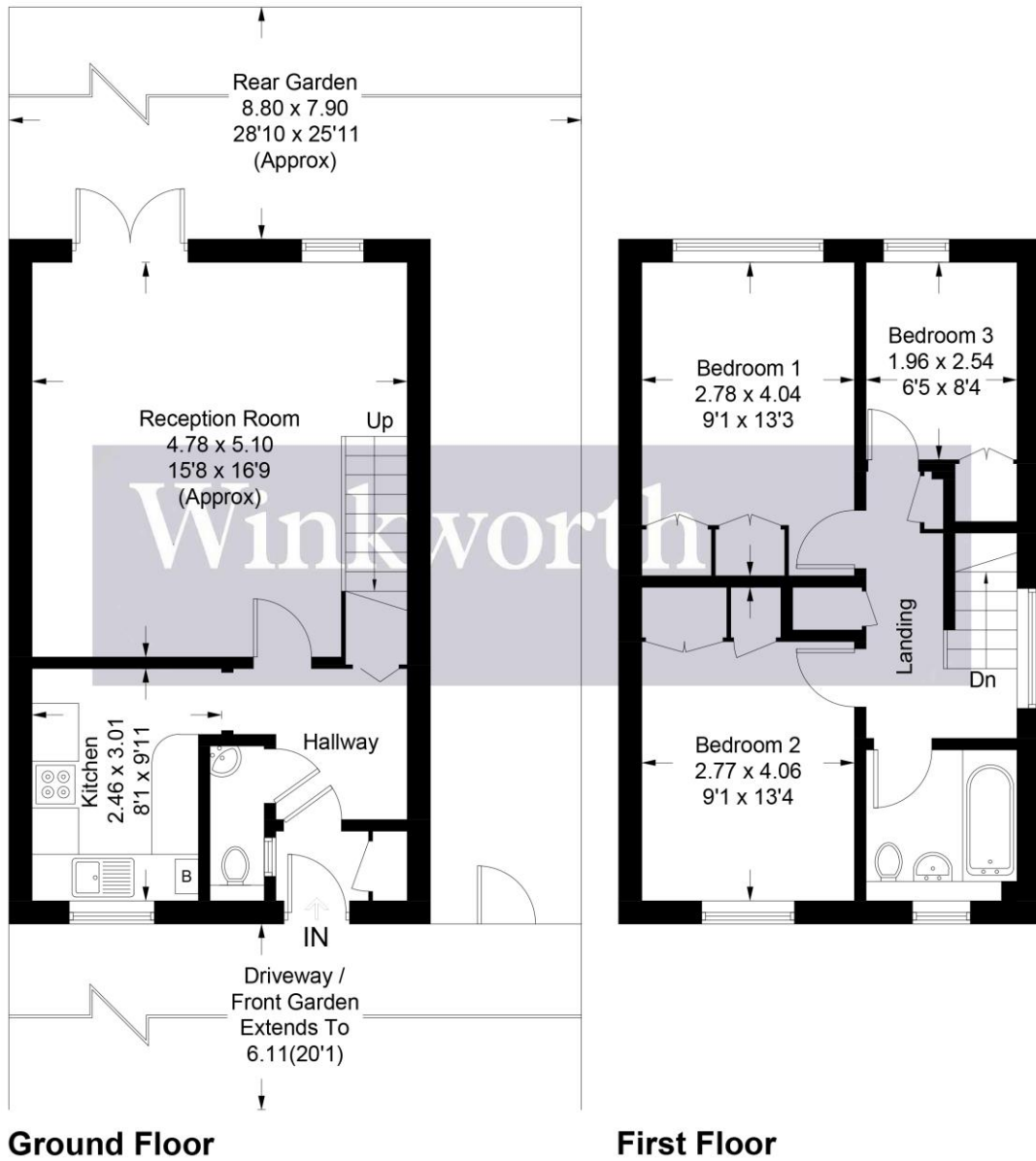
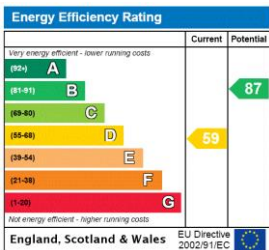


Illustration for identification purposes only, measurements are approximate, not to scale. Winkworth © 2024 (ID1066132)

This floorplan is for illustration purposes only and is not to scale. The position and size of doors, windows, appliances and other features are approximate.



Tenure: Freehold
Term: Expires -
Service Charge: £0 per annum
Ground Rent: £ 0 Annually (subject to increase)
Council Tax Band: D

Where no figures are shown, we have been unable to ascertain the information. All figures that are shown were correct at the time of printing.