



DACRES ROAD, LONDON, SE23  
**£1,350,000 FREEHOLD**

Forest Hill | | [foresthill@winkworth.co.uk](mailto:foresthill@winkworth.co.uk)





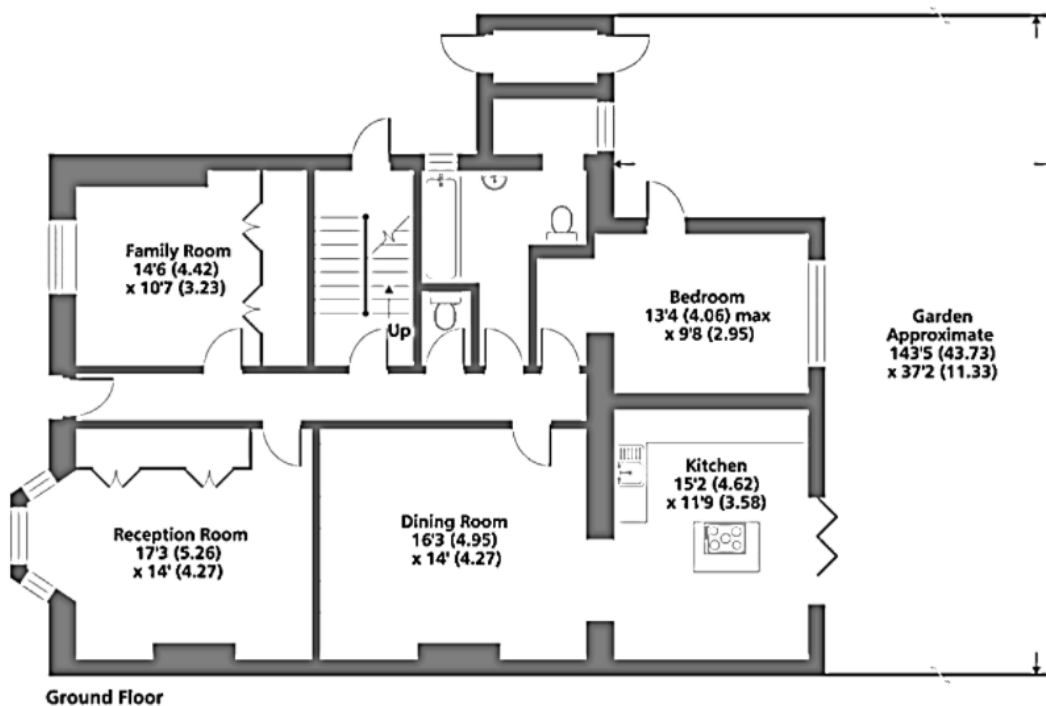
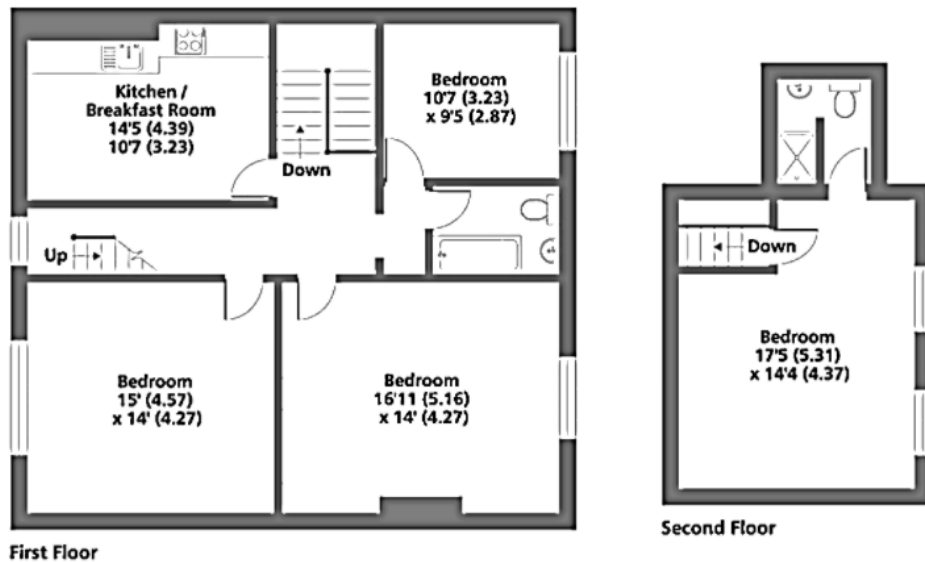
**DESCRIPTION:**

This exceptional double-fronted Victorian house offering over 2500sqft of internal space and 143ft garden!









**Dacres Road, SE23**  
 Approximate Area = 2567 sq ft / 238.4 sq m  
 Outbuilding = 20 sq ft / 1.8 sq m  
 Total = 2587 sq ft / 240.3 sq m  
 For identification only - Not to scale

This floorplan is for illustration purposes only and is not to scale. The position and size of doors, windows, appliances and other features are approximate.

**Tenure:** Freehold

Score	Energy rating	Current	Potential
92+	A		
81-91	B		
69-80	C		77 C
55-68	D	69 D	
39-54	E		
21-38	F		
1-20	G		