



MILTON ROAD N6
£380,000 LEASEHOLD

**A SUPERB ONE BEDROOM APARTMENT OCCUPYING
 THE ENTIRE SECOND FLOOR (TOP) OF THIS
 VICTORIAN-BUILT FORMER HOUSE.**

Highgate | 020 8341 1988 | highgate@winkworth.co.uk

Winkworth

for every step...

winkworth.co.uk



DESCRIPTION:

A superb one bedroom apartment occupying the entire second floor (top) of this Victorian built former house. The property comprises well-proportioned accommodation and is presented for sale in good decorative condition. Milton Road is quietly located within the Highgate Conservation Area, less than half a mile from Highgate Tube Station. The Parkland Walk - three and a half miles long, is London's longest linear Local Nature reserve and is almost literally at your doorstep.

MATERIAL INFORMATION:

Tenure: 215 years from 16th January 1989.

Service Charges: A quarter of any expenditure on the building. Estimated 2024/25 - £691.05. The Ground Rent is £10.00 per annum. The Freeholder is Haringey Council.

Council Tax: Haringey Council BAND C (£1,962.61 for 2025/26).

Parking: Residents parking by permit.

Utilities: Mains connected electricity, gas, water and sewerage.

Broadband and Data Coverage: Ultrafast Broadband services are available (Openreach & Virgin Media) with a very high confidence level of 5G data coverage for mobile phones.

Construction Type: Brick and slate.

Heating: Gas Central heating.

Notable Lease Covenants & Restrictions: Not to use the Flat for any purpose whatsoever other than as a private residential flat. The owner shall ensure that any domestic pet is kept under proper control. To keep the floors covered with suitable material for avoiding the transmission of noise.

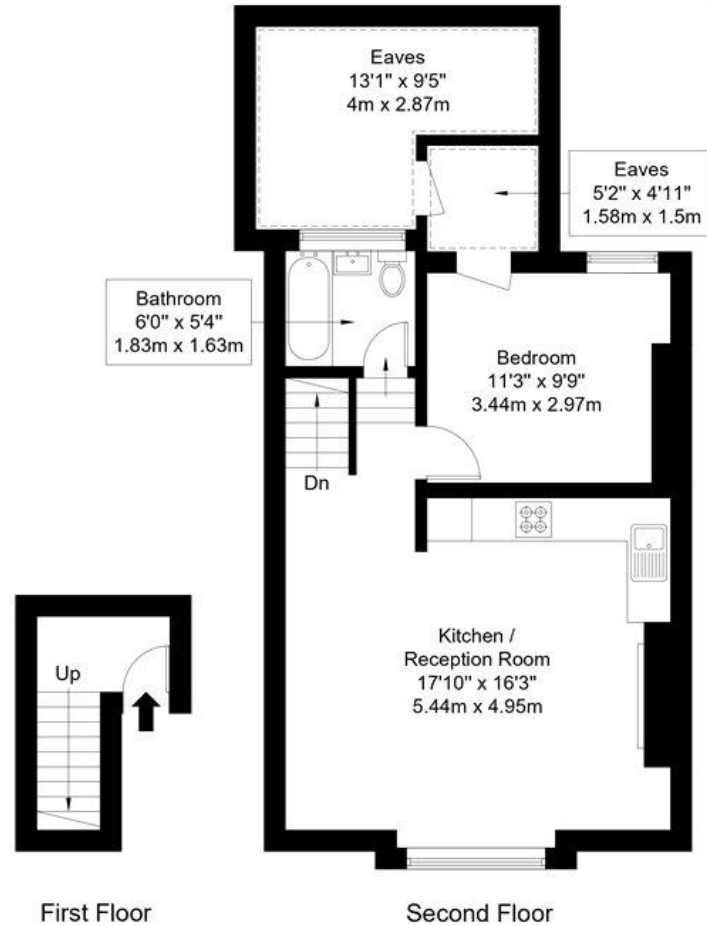
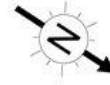


Milton Road, N6 5QD

Approx Gross Internal Area = 47.7 sq m / 513 sq ft
 Restricted head height / Eaves = 11.5 sq m / 124 sq ft
 Total = 59.2 sq m / 637 sq ft



= Reduced headroom below 1.5m / 5'0



First Floor

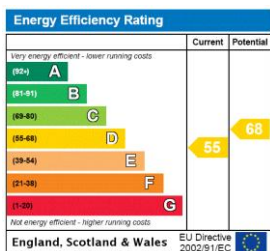
Second Floor

Ref :

Copyright **BLEU PLAN**

The Floor plan is not to scale and measurements and areas shown are approximate and therefore should be used for illustrative purposes only. The plan has been prepared in accordance with the RICS code of Measuring Practice and whilst we have confidence in the information produced it must not be relied on. Maximum lengths and widths are represented on the floor plan. If there is any aspect of particular importance, you should carry out or commission your own inspection of the property.
 Copyright @ BleuPlan

This floorplan is for illustration purposes only and is not to scale. The position and size of doors, windows, appliances and other features are approximate.



Highgate | 020 8341 1988 | highgate@winkworth.co.uk

Winkworth

for every step...

winkworth.co.uk

Winkworth wishes to inform prospective buyers and tenants that these particulars are a guide and act as information only. All our details are given in good faith and believed to be correct at the time of printing but they don't form part of an offer or contract. No Winkworth employee has authority to make or give any representation or warranty in relation to this property. All fixtures and fittings, whether fitted or not are deemed removable by the vendor unless stated otherwise and room sizes are measured between internal wall surfaces, including furnishings.