



Lone Pine Drive
West Parley, Ferndown BH22 8LR
Guide Price £840,000

Winkworth



GUIDE PRICE £840,000 FREEHOLD

This stunning detached home is approached via electric gates and has been beautifully refurbished throughout with a versatile layout to suit a range of buyer's needs and further benefits from a garage with home gym and an outdoor swimming pool! Positioned in a particularly sought after residential location on a secluded plot of approx 0.6 of an acre which adjoins protected heathland, making it incredibly peaceful and secluded.

Detached Family Home
Three Double Bedrooms
Master With Walk In Wardrobe & En-suite
Two Reception Rooms
Stunning Open Plan Kitchen Diner
Garden Backing Into Heathland
Outdoor Swimming Pool
Utility Room
Double Garage

EPC D | Council Tax Band F

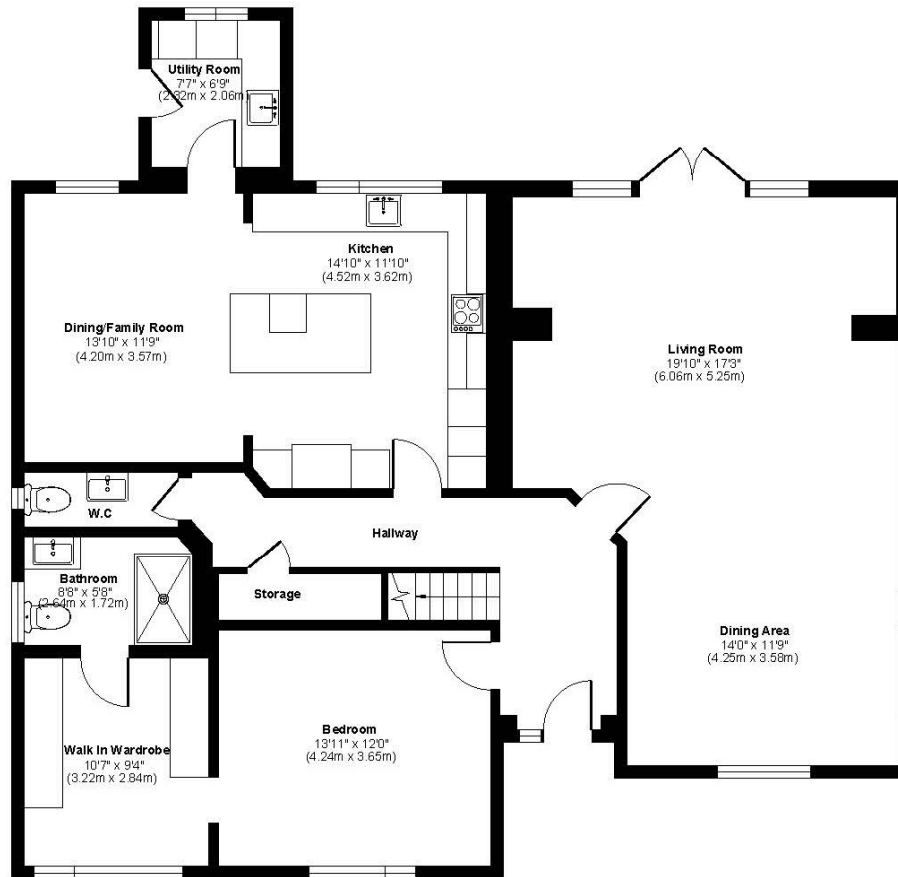
01202 434365
ferndown@winkworth.co.uk



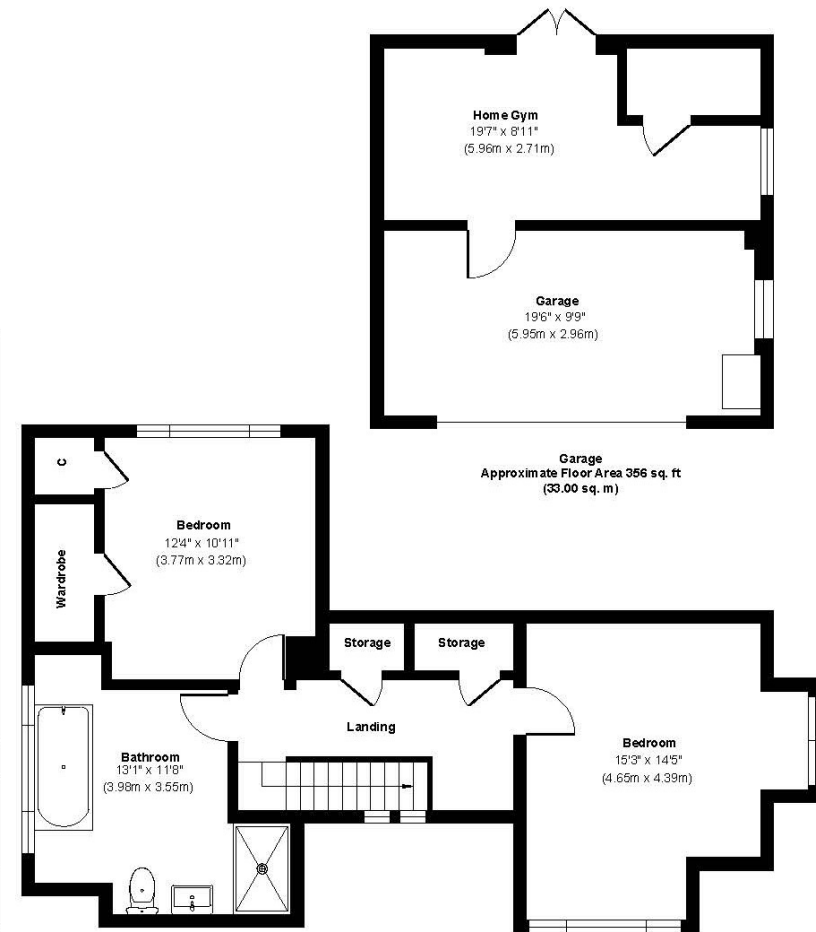




Lone Pine Drive



**Ground Floor Approximate
Floor Area 1467 sq. ft
(136.00 sq. m)**



**First Floor Approximate
Floor Area 618 sq. ft
(57.00 sq. m)**

Approx. Gross Internal Floor Area 2441 sq. ft / 227.00 sq m
Illustration for identification purposes only, measurements are approximate and not to scale.



LOCATION

Lone Pine Drive is a particularly sought after location, conveniently close to Ferndown town centre which has a range of amenities including an M&S Foodhall, independent Cafés, and restaurants. Within catchment for Ferndown Schools and walking distance of Ferndown Championship Golf Course which is located approx 800 metres away. There are bus routes within a short walk giving you easy access to Bournemouth, Wimborne and Poole, all of which have an excellent range of shops, bars, restaurants and leisure facilities. Award winning sandy beaches are just twenty minutes away and the A31 provides quick access to the New Forest, Southampton, London and beyond.

Winkworth Ferndown

406 Ringwood Road, Ferndown, Dorset, BH22 9AU

01202 434365 | ferndown@winkworth.co.uk

winkworth.co.uk/ferndown

Winkworth